



Standard Business Reporting

WA OSR Payroll Tax Periodic Message Implementation Guide

Program name: *Standard Business Reporting*

Date: 22 July 2010

Program Director: Paul Madden

Deleted: 25th March 2010

! This document and its attachments are **Unclassified**

➤ For further information or questions, contact the SBR Program Office at SBRServiceDesk@ato.gov.au or call +61 1300 488 231. International callers may use +61 2-6216 5577.

VERSION CONTROL

Version	Release date	Description of changes
1.0	1/06/2009	Initial release
2.0	25/09/2009	Production Release – suitable for use
3.0	25/3/2010	The main changes to the MIG are as follows: <ol style="list-style-type: none"> 1. The establishment of a Common MIG. 2. Message Type Text amended to remove version number. 3. Pre Fill Periodic Service added to support Wage Adjustments. 4. The PaymentMechanism module used in the PreLodge Response, Lodge Request and Lodge Response of the Periodic has moved from the ReportingParty context to the GovernmentAgency context.
4.0	22/07/2010	<p>The changes to the MIG are as follows:</p> <ol style="list-style-type: none"> 1. The amendment of the XBRL fact for Fringe Benefits in the Response Pre Fill Periodic, Request Calculate Periodic and the Request Lodge Periodic services. 2. The amendment of the XBRL fact for Overseas Employees in the Response Pre Fill Periodic, Request Calculate Periodic and the Request Lodge Periodic services. 3. The inclusion of a new XBRL fact for Employee Share Acquisition Scheme in the Response Pre Fill Periodic, Request Calculate Periodic and the Request Lodge Periodic services.

Formatted: Bullets and Numbering

ENDORSEMENT

APPROVAL

Helen Austin

Chief Solutions Architect
Solutions Integration
Standard Business Reporting

Copyright

© Commonwealth of Australia 2010

This work is copyright. Use of the Information and Material is subject to the terms and conditions in the "Standard Business Reporting (SBR) Disclaimer and Conditions of Use" which is available at

Deleted: 3

<http://www.sbr.gov.au>. You must ensure that you comply with those terms and conditions. In particular, those terms and conditions include disclaimers and limitations on the liability of the Commonwealth and the SBR Agencies and an indemnity from you to the Commonwealth and its personnel, the SBR Agencies and their personnel.

You must include this copyright notice in all copies of this Information and Material which you create. If you modify, adapt or prepare derivative works of the Information and Material, the notice must still be included but you must add your own copyright statement to your modification, adaptation or derivative work which makes clear the nature of your modification, adaptation or derivative work and you must include an acknowledgement that the adaptation, modification or derivative work is based on Commonwealth owned Information and Material.

WA OSR Copyright Notice

Subject to the fair dealing provisions of the Copyright Act 1968, all rights reserved.

This material may not be published, broadcast, re-written or re-distributed in whole or part without the permission of the Office of State Revenue, Western Australia.

Deleted: 3

Table of contents

1	Introduction.....	6
1.1	Purpose.....	6
1.2	Audience and Scope	6
1.3	References.....	6
1.4	Change Management.....	6
2	General Instructions.....	7
2.1	Authorisation of Intermediaries.....	7
2.2	Declarations.....	7
2.3	SBDH Variations.....	7
2.3.1	Business Documents.....	7
2.3.2	Attachments.....	7
2.3.3	Document Identifiers.....	7
2.3.4	Lodgment date and time interpretation	7
2.4	Response Messages.....	8
2.4.1	Messages described in the MIG.....	8
2.4.2	Messages not described in the MIG.....	8
2.4.3	Messages not described at all.....	8
2.4.4	Tuples and Context	8
2.5	Balance Attribute not to be used.....	8
2.6	Screen shots from Revenue Online	8
3	Business Overview.....	9
3.1	Periodic Return	9
3.2	Wage Adjustments (Modification of a lodged Periodic Return)	10
3.3	Prerequisites.....	10
3.4	Schema Use by Date.....	10
3.5	Commencement date for services	11
4	XBRL Context Specifications.....	12
4.1	Context Specification – Reporting Party:	12
4.2	Context Specification – Group Status:	13
4.3	Context Specification – Government Agency:	14
5	Periodic Interaction Model.....	15
5.1	Service Summary	15
5.1.1	Lodge Periodic.....	15
5.1.2	Amend Periodic	16
5.2	Pre Fill Periodic Payroll Tax Specifications.....	17
5.2.1	Request Pre Fill Periodic Payroll Tax - Message	17
5.2.1.1	Discoverable Taxonomy Set References.....	17
5.2.1.1	Standard Business Document Header Content.....	17
5.2.1.2	Standard Business Document Body Content.....	18
5.2.2	Response Pre Fill Periodic Payroll Tax - Message.....	20
5.2.2.1	Discoverable Taxonomy Set References.....	20
5.2.2.2	Standard Business Document Header Content.....	20
5.2.2.3	Standard Business Document Body Content.....	21
5.3	Calculate Periodic Payroll Tax Specifications.....	23
5.3.1	Request Calculate Periodic Payroll Tax - Message.....	23
5.3.1.1	Discoverable Taxonomy Set References.....	23
5.3.1.2	Standard Business Document Header Content.....	23
5.3.1.3	Standard Business Document Body Content.....	24
5.3.2	Response Calculate Periodic Payroll Tax - Message.....	29
5.3.2.1	Discoverable Taxonomy Set References.....	29
5.3.2.2	Standard Business Document Header Content.....	29
5.3.2.3	Standard Business Document Body Content.....	29
5.4	Lodge Periodic Payroll Tax Specifications.....	33
5.4.1	Request Lodge Periodic Payroll Tax - Message.....	33

Deleted: 3

5.4.1.1	Discoverable Taxonomy Set References.....	33
5.4.1.2	Standard Business Document Header Content.....	33
5.4.1.3	Standard Business Document Body Content.....	34
5.4.2	Response Lodge Periodic Payroll Tax - Message.....	40
5.4.2.1	Discoverable Taxonomy Set References.....	40
5.4.2.2	Standard Business Document Header Content.....	40
5.4.2.3	Standard Business Document Body Content.....	40
Appendix A – The Message Content Table Explained		45
Appendix B – Screen Shots from Revenue Online.....		48

List of Figures

Figure 1 – WA OSR Payroll Tax Return (Periodic) Business Context	9
Figure 2 – WA OSR Wage Adjustment (Periodic) Business Context.....	10
Figure 4 – Periodic Workflow for WA OSR	15
Figure 5 – Wage Adjustment Workflow for WA OSR.....	16

Terminology

For definition of the terminology and acronyms used within this document please refer to the glossary on the SBR website – Click http://www.sbr.gov.au/Developers/SBR_Taxonomy/Glossary.aspx to go to the glossary.

The key words “MUST”, “MUST NOT”, “REQUIRED”, “SHALL”, “SHALL NOT”, “SHOULD”, “SHOULD NOT”, “RECOMMENDED”, “MAY”, and “OPTIONAL” in this document are to be interpreted as described in RFC 2119 <http://www.ietf.org/rfc/rfc2119.txt>. The use of the word “Mandatory” is to be read as “MUST”.

Deleted: 3

1 INTRODUCTION

1.1 PURPOSE

The purpose of this document is to support software developers in the implementation of the SBR Payroll Tax Periodic reporting service for the state of Western Australia (along with the Cocos Island and Christmas Island Territories that are administered by WA OSR).

1.2 AUDIENCE AND SCOPE

This document contains the necessary information required to support WA OSR Payroll Tax Common services.

1.3 REFERENCES

Ref	Document Link	Document description
1)	State and Territory Payroll Tax Message Implementation Guide Overview document can be downloaded http://www.sbr.gov.au/Developers/Downloads/Common_components.aspx	This is the entry document to the individual SRO MIGS. This document provides a holistic view of the SRO payroll tax solutions and highlights where opportunities for consistent solutions have been adopted.
2)	The SBR Web Service Implementation Guide document can be downloaded http://www.sbr.gov.au/Developers/Downloads/Common_components.aspx	Technical interface data that is common to all business processes and messages that use the SBR channel: <ul style="list-style-type: none">• Web service protocol specifications• Standard message header structure• Standard error codes• Authentication protocol and trust broker
3)	The SBR Taxonomy Architecture document can be downloaded http://www.sbr.gov.au/Developers/Downloads/Common_components.aspx	Reference document that describes the structure of the SBR taxonomy, its naming conventions, release management and change control, and how each business interaction fits within the architecture.
4)	The Software Developer Kit documentation can be accessed http://www.sbr.gov.au/Developers/Software_developers_kit/SDK_Guide.aspx	Reference information for software developers using the SBR software developer kit

1.4 CHANGE MANAGEMENT

If a material change is required to the WA OSR Common Message Implementation Guide the document will be re-released. The Taxonomy Approval Committee must approve any change.

Deleted: 3

2 GENERAL INSTRUCTIONS

This section provides instructions that are relevant across all collaborations and messages specified within this MIG.

2.1 AUTHORISATION OF INTERMEDIARIES

WA OSR utilises a delegated authority model for Revenue Online (ROL) and SBR. For each ROL account there is one Administrator and they can add as many General Users as they like. To use SBR each user will be required to obtain an SBR Credential (AUSkey) and link this to their ROL Username in ROL. An Intermediary can be either an Administrator or a General User.

2.2 DECLARATIONS

No explicit Declaration is required. However, all SBR User's are required to be registered WA OSR ROL clients. All ROL clients must accept terms and conditions in relation to their obligations to WAOSR at the point of registration. The requirement to be registered via this system implies that these declarations also cover transactions made via SBR.

2.3 SBDH VARIATIONS

The WIG describes the SBDH content in detail. Described in this section are only variations from what is defined in the WIG.

2.3.1 Business Documents

Only one business document in the SBDB per message will be accepted.

2.3.2 Attachments

No attachments will be accepted or provided.

2.3.3 Document Identifiers

The following document Identifiers are used by WA OSR:

Period.Unique.Identifier - used to link the monthly returns that relate to a quarterly return.

BusinessDocument.GovernmentGeneratedIdentifier.Text - used to uniquely identify the return period.

Lodgment.Receipt.Identifier - provided upon receipt of a lodgment.

2.3.4 Lodgment date and time interpretation

The SBDH contains a lodgment receipt date and time. This is contained in the element Lodgement.Receipt.Datetime, is in xs:dateTime format and will be provided in UTC time (not local). For List and Prelodge interactions WA OSR will not provide a lodgment receipt.

As the xs:dateTime format requires a time, a default 00:00:00 time will be assigned to the lodgment receipt. It should also be noted that conversion of Lodgement.Receipt.Datetime to local time must occur before displaying the date. Failure to perform this conversion could lead to an incorrect date being displayed to the user.

For WA OSR Payroll Tax interactions, a full time and date (in UTC) will be provided.

Deleted: 3

2.4 RESPONSE MESSAGES

2.4.1 Messages described in the MIG

Where business rules associated with data elements could be reasonably implemented by a Software Developer they have been described in the business content tables below along with an associated response message code. A description of response message coding can be found in Appendix A of this document.

2.4.2 Messages not described in the MIG

Some business rules are implemented within the WA OSR core processing systems but are not practical to be implemented elsewhere as they refer to business data held within the WA OSR. These messages are listed in the SBR Response Message Repository only.

Examples of these messages follow:

Message Event Item	Value
Message.Event.Item.Error.Code	WA.OSR.WS.000001
Message.Event.Item.Severity.Code	Error
Message.Event.Item.Short.Description	Service unavailable. Complete your lodgement in Revenue Online at https://rol.osr.wa.gov.au/rol/
Message.Event.Item.Detailed.Description	The WAOSR database is currently unavailable

2.4.3 Messages not described at all

There may be limited messages produced by WA OSR core processing systems that have not been documented. They will be returned in the format as described above.

2.4.4 Tuples and Context

All facts reported in a tuple must use the same context.

2.5 BALANCE ATTRIBUTE NOT TO BE USED

The balance attribute of each element used in the WA OSR Report is based on the SBR AU Taxonomy and cannot be relied upon to be that of WA OSR.

2.6 SCREEN SHOTS FROM REVENUE ONLINE

Screen shots from WA OSR's online Portal can be found in Appendix B of this document. These have been provided as a guide that can be used by software developers looking to implement WA OSR Payroll Tax.

Deleted: 3

3 BUSINESS OVERVIEW

The WA OSR (along with the Cocos Island and Christmas Island Territories that are administered by WA OSR) will implement the following business functions via SBR:

- Periodic Return
- Wage Adjustments (Modification of a lodged Periodic Return)
- Australia Wide Wages Return

3.1 PERIODIC RETURN

The below diagram illustrates all possible interactions between a client and the WA Office of State Revenue for the lodgement of a periodic Payroll Tax Return.

The top half of the diagram shows the interactions that are currently available to a Client for the purposes of lodging a Payroll Tax Return via the WA OSR Portal Revenue Online (<https://rol.osr.wa.gov.au/rol/>). The interactions that will be available via the SBR platform are shown in the second half of the diagram.

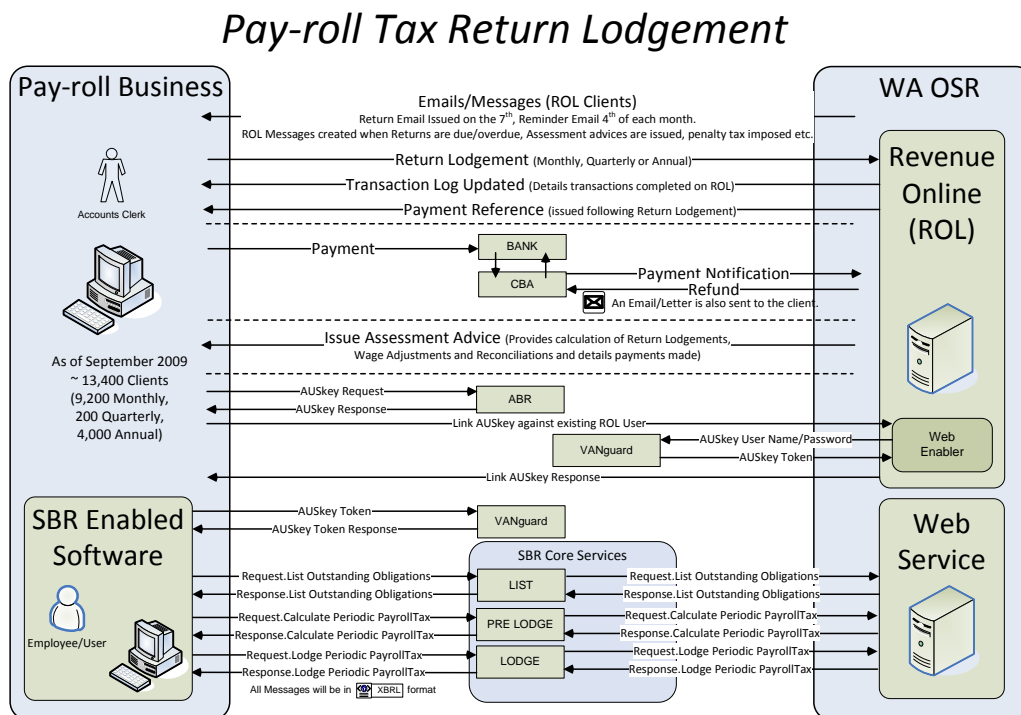


Figure 1 – WA OSR Payroll Tax Return (Periodic) Business Context

Deleted: 3

3.2 WAGE ADJUSTMENTS (MODIFICATION OF A LODGED PERIODIC RETURN)

The below diagram illustrates all possible interactions between a client and the WA Office of State Revenue for the modification of a lodged Periodic Return (Wage Adjustment).

The top half of the diagram shows the interactions that are currently available to a Client for the purposes of completing a Wage Adjustment via the WA OSR Portal Revenue Online (<https://rol.osr.wa.gov.au/rol/>). The interactions that will be available via the SBR platform are shown in the second half of the diagram.

Modification of Return Lodgement (Wage Adjustment)

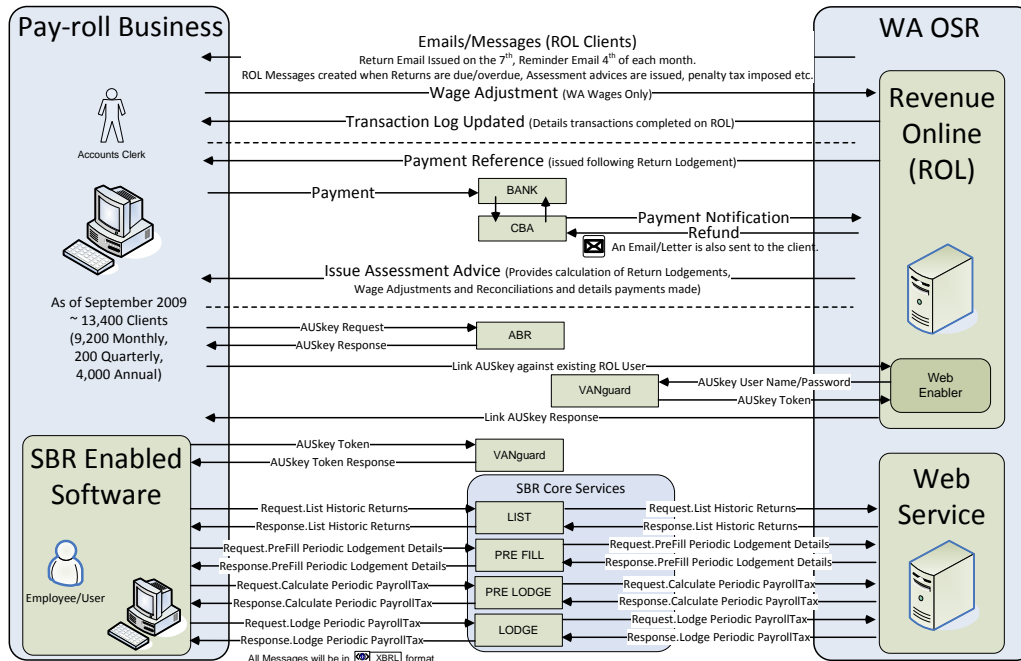


Figure 2 – WA OSR Wage Adjustment (Periodic) Business Context

3.3 PREREQUISITES

WA OSR requires employers to complete the following:

- Register with WA OSR as a Payroll tax Client specifically via its current online portal (Revenue Online referred to as ROL). This operation creates a business registration within WA OSR's core Revenue Collection Information System (referred to as RCIS) and an online user account for ROL;
- Obtain an SBR credential for authentication;
- Associate this credential with an existing ROL account; and
- To use the direct debit payment facility (referred to as the Customer Initiated Payment System) the client must register their account details with WA OSR, this can be done via ROL.

3.4 SCHEMA USE BY DATE

WA OSR will only support the latest version of the ptlwa.0001 reports.

Deleted: 3

3.5 COMMENCEMENT DATE FOR SERVICES

Periodic Lodgement:

Periodic Lodgements will be available with effect from 1st July 2010, this service will provide details of the July 2010 Return onwards.

Wage Adjustment:

Wage Adjustments will be available with effect from 1st July 2011, this service will provide details of the July 2010 Return onwards.

Deleted: 3

4 XBRL CONTEXT SPECIFICATIONS

The following sections define the context specifications that will be used within this MIG. The context types are allocated to the individual data elements within the message specifications below.

4.1 CONTEXT SPECIFICATION – REPORTING PARTY:

XBRL Instance Context Data Concept	Requirement	Instructions/Rules	Rule Imp	SBR Msg code
Context Identifier	Mandatory	This is a unique identifier used to link the data element to a defined XBRL context. SBR is recommending a four character id starting with "C" and a three digit sequential number for each context e.g. C001 1. Must be a valid value	1. XBRL	1. WA.OSR.WS.000006
Entity Identifier	Mandatory	This field must be set to the ABN that the business document instance relates to. 1. Must be a valid ABN 2. ABN must be registered with receiving agency	1. MIG 2. MIG	1. WA.OSR.DB.100015 2. WA.OSR.DB.100017
Entity Identifier Scheme	Mandatory	1. This field must be set to http://www.abr.gov.au/abn	1. MIG	1. WA.OSR.WS.000008
Entity Segment	Mandatory	1. Explicit member dimension ReportPartyType set to "RprtPyType.02.03:ReportingParty"	1. XBRL	1. WA.OSR.WS.000006
	Mandatory	1. Explicit member dimension AustralianStatesTerritoriesAndOffShoreAreas must be set to one of the following: "h01.02.01:WA", "h01.02.01:CC", "h01.02.01:C"	1. XBRL	1. WA.OSR.WS.000006
Period Type	Mandatory	The period type must be set to the following start date and end date		
Period Date - Start Date	Mandatory	1. Both the Start and End Date will be provided at the message level.	1. NA	1. WA.OSR.WS.000006
Period Date - End Date	Mandatory			

Deleted: 3

4.2 CONTEXT SPECIFICATION – GROUP STATUS:

XBRL Instance Context Data Concept	Requirement	Instructions/Rules	Rule Imp	SBR Msg code
Context Identifier	Mandatory	This is a unique identifier used to link the data element to a defined XBRL context. SBR is recommending a four character id starting with "C" and a three digit sequential number for each context e.g. C001 1. Must be a valid value	1. XBRL	1. WA.OSR.WS.000006
Entity Identifier	Mandatory	This field must be set to the ABN that the business document instance relates to. 1. Must be a valid ABN 2. ABN must be registered with receiving agency	1. MIG 2. MIG	1. WA.OSR.DB.100015 2. WA.OSR.DB.100017
Entity Identifier Scheme	Mandatory	1. This field must be set to http://www.abr.gov.au/abn	1. MIG	1. WA.OSR.WS.000008
Entity Segment	Mandatory	1. Explicit member dimension ReportPartyType set to "RprtPyType.02.03:ReportingParty"	1. XBRL	1. WA.OSR.WS.000006
	Mandatory	1. Explicit member dimension AustralianStatesTerritoriesAndOffShoreAreas must be set to one of the following: "h01.02.01:WA", "h01.02.01:CC", "h01.02.01:CI"	1. XBRL	1. WA.OSR.WS.000006
	Mandatory	1. Explicit member dimension EmployerGroupStatus must be set to one of the following: "EmpGrpSts.02.04:NGE", "EmpGrpSts.02.04:DGE", "EmpGrpSts.02.04:GE"	1. XBRL	1. WA.OSR.WS.000006
Period Type	Mandatory	The period type must be set to the following start date and end date		
Period Date - Start Date	Mandatory	1. Both the Start and End Date will be provided at the message level.	1. XBRL	1. WA.OSR.WS.000006
Period Date - End Date	Mandatory			

Deleted: 3

4.3 CONTEXT SPECIFICATION – GOVERNMENT AGENCY:

XBRL Instance Context Data Concept	Requirement	Instructions/Rules	Rule Imp	SBR Msg code
Context Identifier	Mandatory	This is a unique identifier used to link the data element to a defined XBRL context. SBR is recommending a four character id starting with "C" and a three digit sequential number for each context e.g. C001 1. Must be a valid value	1. NA	1. NA
Entity Identifier	Mandatory	1. This field must be set to the ABN of WA OSR	1. NA	1. NA
Entity Identifier Scheme	Mandatory	1. This field must be set to http://www.abr.gov.au/abn	1. NA	1. NA
Entity Segment	Mandatory	1. Explicit member dimension ReportPartyType set to "RprtPyType.02.03:GovernmentAgency"	1. NA	1. NA
Period Type	Mandatory	The period type must be set to the following start date and end date		
Period Date - Start Date	Mandatory	1. Both the Start and End Date will be provided at the message level.	1. NA	1. NA
Period Date - End Date	Mandatory			

Deleted: 3

5 PERIODIC INTERACTION MODEL

This section describes the sequence of the interactions required to enable the fulfilment of the WA OSR periodic Payroll tax return.

5.1 SERVICE SUMMARY

The workflow defined above represents the abstract process model for the periodic payroll tax return. The following defines the sequence, optionality and repeatability of the service execution. Where a service is identified as '*Mandatory*' then the Software Developer has to implement this service as the service needs to be executed by the business in order to complete the transaction. Repeatability indicates if the service can execute the service more than once – 'Yes' meaning that a service can be executed multiple times within the sequence.

The services must be executed in the specified sequence – if a service is executed out of sequence then a number of SBR response codes may be returned. Example scenarios may include those relating to invalid WAOSR Notice identifiers or invalid Client Account balances. Please refer to WAOSR's list of available Response Messages for more information.

5.1.1 Lodge Periodic

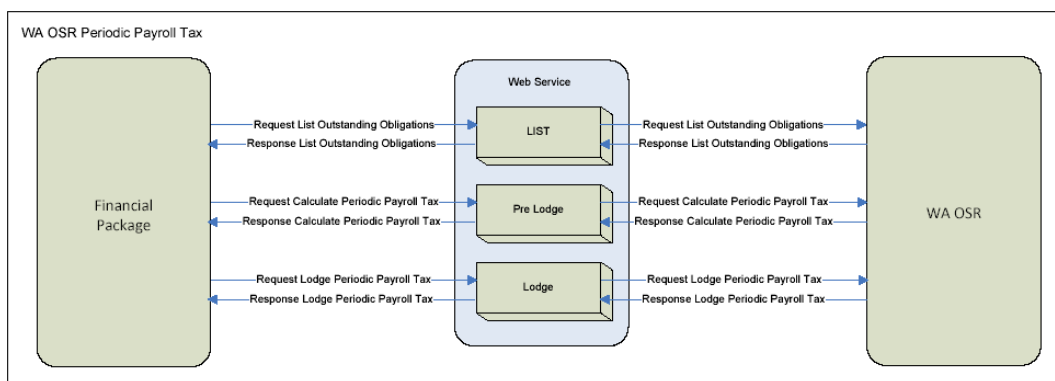


Figure 3 – Periodic Workflow for WA OSR

	Service Name	Mandatory	Repeatability
1.	List Outstanding Obligations The purpose of this interaction is to allow business to request a summary listing of their Outstanding Obligations for WA OSR. The list will be based on the ABN provided. Please see <i>WA OSR Payroll Tax Common MIG</i> for message specification.	Yes	Yes
2.	Calculate Periodic Payroll Tax The purpose of this interaction is to enable the business to supply the relevant revenue data elements to WA OSR who determine the business liability and amount payable based on this information.	Yes	Yes
3.	Lodge Periodic Payroll Tax The purpose of this interaction is for the business to formally lodge their periodic tax return and optionally authorise a payment via Direct Debit. If a user wishes to lodge an amendment for a given period, they must do so via the amendment service interactions - see next section.	Yes	No

5.1.2 Amend Periodic

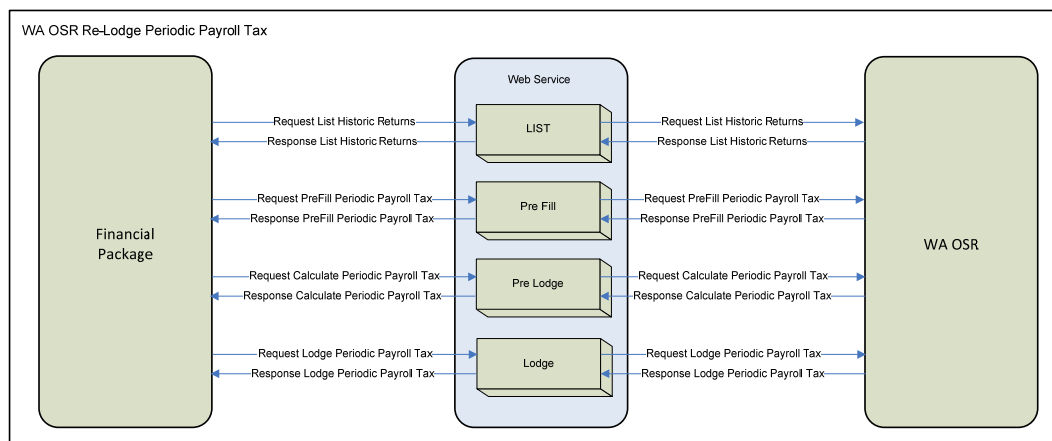


Figure 4 – Wage Adjustment Workflow for WA OSR

If a lodgement needs to be amended then the following business services need to be used.

	Service Name	Mandatory	Repeatability
1.	List Historic Returns The purpose of this interaction is to allow business to request a summary listing of their Historic Returns for WA OSR. The list will be based on the ABN provided. Please see <i>WA OSR Payroll Tax Common MIG</i> for message specification.	Yes	Yes
2.	<u>Pre Fill Periodic Lodgement Details</u> This service will enable users to retrieve details of specific previous lodgement.	No	Yes
3.	Calculate Periodic Payroll Tax The purpose of this interaction is to enable the business to supply the relevant revenue data elements to WA OSR who determine the business liability and amount payable based on this information.	Yes	Yes
4.	Lodge Periodic Payroll Tax The purpose of this interaction is for the business to formally lodge their periodic tax return and optionally authorise a payment via Direct Debit.	Yes	Yes

Deleted: Get

5.2 PRE FILL PERIODIC PAYROLL TAX SPECIFICATIONS

Interaction Name	Pre Fill Periodic PayrollTax
Description	The purpose of this interaction is to enable the business to retrieve the wage breakdown from their latest lodgement to WA OSR.
Stakeholders	Business, State Revenue Offices
Pre-conditions	User completed a List Historic and selected the return to amend.
Post-conditions	Success – The User will receive the wage breakdown from the latest lodgement. Failure – The User will receive an Error message.
Initiating party	Business
Channel	SBR
Core Service Map	PreFill

5.2.1 Request Pre Fill Periodic Payroll Tax - Message

5.2.1.1 Discoverable Taxonomy Set References

Schema	ptlwa.0001.prefill.request.02.01.report.xsd	Deleted: 00
Linkbases	ptlwa.0001.prefill.request.02.01.defLink.xml	Deleted: 00
	ptlwa.0001.prefill.request.02.01.labLinkInfoCls.xml	Deleted: 0
	ptlwa.0001.prefill.request.02.01.presLink.xml	Deleted: 0
	ptlwa.0001.prefill.request.02.01.refLink.xml	Deleted: 0
		Deleted: Example Inst... [1]
		Formatted: Bullets and Numbering

5.2.1.1 Standard Business Document Header Content

The WIG provides the specification of the SBDH. The following table specifies the message specific data element values or any variations to the WIG.

Attribute Name	Optionality	Rules/Values	Rule Imp	SBR Msg Code
Message Type Text	Mandatory	Value must be "ptlwa.0001.prefill.request"	1. MIG	1. WA.OSR.XSLT.001012

5.2.1.2 Standard Business Document Body Content

The following describes the facts and context required to be supplied within the XBRL instance document populated into the SBDB element BusinessDocument.instance.text

5.2.1.2.1 Request Pre Fill Periodic XBRL Context

Context Spec	Hypercube Name	Associated Segment Dimensions	Instructions/Rules	Rule Imp.	SBR Message Code
ReportingParty	ReportingPartyWACCCI	ReportPartyType, AustralianStatesTerritoriesAndOffShoreAreas,	1. There must be only one Context within the instance document. 2. The Start Date should be set to the start date relevant to the periodic return. 3. The End Date should be set to the end date relevant to the periodic return.	1. MIG 2. MIG 3. MIG	1. WA.OSR.XSLT.001044 2. WA.OSR.DB.100028 3. WA.OSR.DB.100030

5.2.1.2.2 Request Pre Fill Periodic Message Content Table

The following table contains the facts required in the instance document.

Context - ReportingParty				
Seq No.	XBRL Fact	Instructions/Rules	Rule Imp.	SBR Message Code
1	Identifiers.StateRevenueOfficeClientNumber.Identifier	1. Mandatory - supplied via List Historic Service 2. This is the Client id as registered with WAOSR	1. MIG 2. Agency	1. WA.OSR.DB.100134 2. WA.OSR.DB.100134
2	Report.Name.Text	1. Mandatory - supplied via List Historic Service	1. Agency	1. WA.OSR.DB.100142
3	Report.Type.Code	1. Mandatory - supplied via List Historic Service	1. Agency	1. WA.OSR.DB.100143
4	Lodgment.Frequency.Code	1. Mandatory - supplied via List Historic Service	1. Agency	1. WA.OSR.DB.100138
5	Report.Amendment.Indicator	1. Mandatory - supplied via List Historic Service.	1. MIG	1. WA.OSR.DB.100035
6	OrganisationNameDetails(Tuple One)			
6.1	OrganisationNameDetails.OrganisationalNameType.Code	1. Mandatory and must be set to "MTR"	1. MIG	1. WA.OSR.DB.100136
6.2	OrganisationNameDetails.OrganisationalName.Text	1. Mandatory - supplied via List Historic Service 2. This is the organisation name as registered with WAOSR	1. MIG 2. Agency	1. WA.OSR.DB.100135 2. WA.OSR.DB.100050
7	BusinessDocument.GovernmentGeneratedIdentifier.Text	1. Mandatory - supplied via List Historic Service	1. Agency	1. WA.OSR.DB.100023

5.2.2 Response Pre Fill Periodic Payroll Tax - Message

5.2.2.1 Discoverable Taxonomy Set References

Schema	ptlwa.0001.prefill.response.02.01.report.xsd	Deleted: 0
Linkbases	ptlwa.0001.prefill.response.02.01.presLink.xml	Deleted: 0
	ptlwa.0001.prefill.response.02.01.labLinkInfoCls.xml	Deleted: 00
	ptlwa.0001.prefill.response.02.01.refLink.xml	Deleted: 00
	ptlwa.0001.prefill.response.02.01.defLink.xml	Deleted: 00
		Deleted: Example Inst ... [2]
		Formatted: Bullets and Numbering

5.2.2.2 Standard Business Document Header Content

Attribute Name	Optionality	Rules/Values
Message Type Text	Mandatory	Value must be "ptlwa.0001. prefill.response"

5.2.2.3 Standard Business Document Body Content

The following describes the facts and context required to be supplied within the XBRL instance document populated into the SBDB element BusinessDocument.instance.text

5.2.2.3.1 Response Pre Fill Periodic XBRL Context

Context Spec	Hypercube Name	Associated Segment Dimensions	Instructions/Rules
ReportingParty	ReportingPartyWACCCI	ReportPartyType, AustralianStatesTerritoriesAndOffShoreAreas	1. The Start Date will be set to the start date relevant to the periodic return. 2. The End Date will be set to the end date relevant to the periodic return.
GroupStatus	ReportingPartyWACCCIEmployerGroupStatus	ReportPartyType, AustralianStatesTerritoriesAndOffShoreAreas, EmployerGroupStatus	1. The Start Date will be set to the start date relevant to the periodic return. 2. The End Date will be set to the end date relevant to the periodic return.

5.2.2.3.2 Response Pre Fill Periodic Message Content Table

The following table contains the facts required in the instance document.

Context – Reporting Party		
Seq No.	XBRL Fact	Rules
1	Identifiers.StateRevenueOfficeClientNumber.Identifier	1. Mandatory
2	OrganisationNameDetails(Tuple One)	
2.1	OrganisationNameDetails.OrganisationalNameType.Code	1. Mandatory
2.2	OrganisationNameDetails.OrganisationalName.Text	1. Mandatory
3	Report.Name.Text	1. Mandatory
4	Report.Type.Code	1. Mandatory
5	Lodgment.Frequency.Code	1. Mandatory
6	Report.Amendment.Indicator	1. Mandatory

Context – GroupStatus		
Seq No.	XBRL Fact	Rules
1	BusinessDocument.GovernmentGeneratedIdentifier.Text	1. Mandatory
2	Remuneration.WagesandSalaries.Payments.Amount	1. Mandatory
3	Remuneration.WagesAndSalaries.ContractorsAndConsultantsPayments.Amount	1. Mandatory
4	Remuneration.CommissionsBonusesandAllowances.Amount	1. Mandatory
5	SuperannuationContribution.EmployerContributions.Amount	1. Mandatory
6	<u>FringeBenefitsTax.Type2GrossedUp.Amount</u>	1. Mandatory
7	Remuneration.Fees.Directors.Amount	1. Mandatory
8	Remuneration.EmploymentTermination.Payments.Amount	1. Mandatory
9	Remuneration.SpecifiedTaxableBenefits.Amount	1. Mandatory
10	<u>Remuneration.EmployeeSharesAndOptions.Amount</u>	<u>1. Mandatory</u>
11	Remuneration.WagesAndSalaries.TaxablePayrollOther.Amount	1. Mandatory
12	Remuneration.WagesAndSalaries.ApprenticesAndTrainees.Amount	1. Mandatory
13	EmploymentConditions.WorkersCompensationPayments.Amount	1. Mandatory
14	Remuneration.WagesandSalaries.DefenceForces.Amount	1. Mandatory
15	<u>Remuneration.WagesAndSalaries.OverseasExempt.Amount</u>	1. Mandatory
16	Remuneration.WagesAndSalaries.ExemptOther.Amount	1. Mandatory
17	Remuneration.WagesAndSalaries.TaxableStateAndInterstateTotal.Amount	1. Conditional. Mandatory if Lodgment.Frequency.Code = "Annually" and GroupStatus of the Reporting Party = "NGE"
18	Remuneration.WagesAndSalaries.TaxableGroupStateAndInterstateTotal.Amount	1. Conditional. Mandatory if Lodgment.Frequency.Code = "Annually" and GroupStatus of the Reporting Party = "DGE"

Deleted: ¶

Deleted: FringeBenefitsTax.Type1PlusType2GrossedUpAdjusted.Amount

Deleted: 0

Deleted: 1

Deleted: 2

Deleted: 3

Deleted: 4

Deleted: Remuneration.WagesAndSalaries.OverseasExemptAfter6Months.Amount

Deleted: 5

Deleted: 6

Deleted: 7

UNCLASSIFIED

5.3 CALCULATE PERIODIC PAYROLL TAX SPECIFICATIONS

Interaction Name	Calculate Periodic PayrollTax
Description	The purpose of this interaction is to enable the business to supply the relevant revenue data elements to WA OSR who determine the business liability and amount payable based on this information.
Stakeholders	Business, State Revenue Offices
Pre-conditions	User has Populated the periodic return with all required information needed to complete the return
Post-conditions	Success – The User will receive details of the tax calculation. Failure – The User will receive an Error message.
Initiating party	Business
Channel	SBR
Core Service Map	PreLodge

5.3.1 Request Calculate Periodic Payroll Tax - Message

5.3.1.1 Discoverable Taxonomy Set References

Schema	ptlwa.0001.calculate.request.02.02.report.xsd	Deleted: 01
Linkbases	ptlwa.0001.calculate.request.02.02.defLink.xml	Deleted: 01
	ptlwa.0001.calculate.request.02.02.labLinkInfoCls.xml	Deleted: 01
	ptlwa.0001.calculate.request.02.02.presLink.xml	Deleted: 01
	ptlwa.0001.calculate.request.02.02.refLink.xml	Deleted: 01
		Deleted: Example Inst ... [3]
		Formatted: Bullets and Numbering

5.3.1.2 Standard Business Document Header Content

The WIG provides the specification of the SBDH. The following table specifies the message specific data element values or any variations to the WIG.

Attribute Name	Optionality	Rules/Values	Rule Imp	SBR Msg Code
Message Type Text	Mandatory	Value must be "ptlwa.0001.calculate.request"	1. MIG	1. WA.OSR.XSLT.001012

5.3.1.3 Standard Business Document Body Content

The following describes the facts and context required to be supplied within the XBRL instance document populated into the SBDB element BusinessDocument.instance.text

5.3.1.3.1 Request Calculate XBRL Context

Context Spec	Hypercube Name	Associated Segment Dimensions	Instructions/Rules	Rule Imp.	SBR Message Code
ReportingParty	ReportingPartyWACCCI	ReportPartyType, AustralianStatesTerritoriesAndOffShoreAreas	1. There must be only one Context within the instance document. 2. The Start Date should be set to the start date relevant to the earliest periodic return. 3. The End Date should be set to the end date relevant to the latest periodic return.	1. MIG 2. MIG 3. MIG	1. WA.OSR.XSLT.001042 2. WA.OSR.DB.100028 3. WA.OSR.DB.100030
GroupStatus	ReportingPartyWACCCIEmployerGroupStatus	ReportPartyType, AustralianStatesTerritoriesAndOffShoreAreas, EmployerGroupStatus	1. If the Report.Amendment.Indicator = 'false' one Context for each Periodic Return is required (see Rule 4 and 5). If the Report.Amendment.Indicator = "true" only one Context is required (disregard rules 4 and 5). 2. The Start Date should be set to the start date relevant to the periodic return. 3. The End Date should be set to the end date relevant to the periodic return. 4. If Lodgment.Frequency.Code = "Monthly" or "Annually" then only one Context must be used with the instance document. 5. If Lodgment.Frequency.Code = "Quarterly" then up to three Contexts must be used with the instance document. The Period.Unique.Identifier links each Obligation within the Quarter.	1. MIG 2. MIG 3. MIG 4. MIG 5. MIG	1. WA.OSR.WS.000006 2. WA.OSR.DB.100028 or WA.OSR.DB.100027 3. WA.OSR.DB.100030 or WA.OSR.DB.100029 4. WA.OSR.WS.000006 5. WA.OSR.WS.000006 or WA.OSR.DB.100037

5.3.1.3.2 Request Calculate Periodic Message Content Table

The following table contains the facts required in the instance document.

Important Notes:

Where Lodgement.Frequency.Code = Annually AND the GroupStatus context of the Reporting Party = GE no calculation will be provided; however message will be validated.

Where Lodgement.Frequency.Code = Annually AND GroupStatus context of the Reporting = DGE no calculation will be provided; however message will be validated.

Context - ReportingParty				
Seq No.	XBRL Fact	Rules	Rule Imp.	SBR Message Code
1	Identifiers.StateRevenueOfficeClientNumber.Identifier	1. Mandatory 2. This is the Client id as registered with WAOSR	1. MIG 2. Agency	1. WA.OSR.DB.100134 2. WA.OSR.DB.100134
2	Report.Name.Text	1. Mandatory	1. Agency	1. WA.OSR.DB.100142
3	Report.Type.Code	1. Mandatory	1. Agency	1. WA.OSR.DB.100143
4	Lodgment.Frequency.Code	1. Mandatory	1. Agency	1. WA.OSR.DB.100138
5	Period.Unique.Identifier	1. Conditional. Mandatory if Lodgment.Frequency.Code = "Quarterly" and Report.Amendment.Indicator = "false"	1. MIG	1. WA.OSR.DB.100139
6	Report.Amendment.Indicator	1. Mandatory and should be set to "false" for a lodgement and "true" for a Wage Adjustment.	1. MIG	1. WA.OSR.DB.100035
7	OrganisationNameDetails(Tuple One)			
7.1	OrganisationNameDetails.OrganisationalNameType.Code	1. Mandatory and must be set to "MTR"	1. MIG	1. WA.OSR.DB.100136
7.2	OrganisationNameDetails.OrganisationalName.Text	1. Mandatory 2. This is the organisation name as registered with WAOSR	1. MIG 2. Agency	1. WA.OSR.DB.100135 2. WA.OSR.DB.100050

Deleted: 2

Context - GroupStatus				
Seq No.	XBRL Fact	Rules	Rule Imp.	SBR Message Code
1	BusinessDocument.GovernmentGeneratedIdentifier.Text	1. Mandatory	1. Agency	1. WA.OSR.DB.100023
2	Remuneration.WagesandSalaries.Payments.Amount	1. Mandatory 2. Must be greater than or equal to zero 3. Cents should not be provided 4. Must not exceed the maximum value of \$99,999,999	1. MIG 2. MIG 3. MIG 4. MIG	1. WA.OSR.DB.100055 2. WA.OSR.DB.100057 3. WA.OSR.DB.100056 4. WA.OSR.DB.100058
3	Remuneration.WagesAndSalaries.ContractorsAndConsultantsPayments.Amount	1. Mandatory 2. Must be greater than or equal to zero 3. Cents should not be provided 4. Must not exceed the maximum value of \$99,999,999	1. MIG 2. MIG 3. MIG 4. MIG	1. WA.OSR.DB.100071 2. WA.OSR.DB.100073 3. WA.OSR.DB.100072 4. WA.OSR.DB.100074
4	Remuneration.CommissionsBonusesandAllowances.Amount	1. Mandatory 2. Must be greater than or equal to zero 3. Cents should not be provided 4. Must not exceed the maximum value of \$99,999,999	1. MIG 2. MIG 3. MIG 4. MIG	1. WA.OSR.DB.100059 2. WA.OSR.DB.100061 3. WA.OSR.DB.100060 4. WA.OSR.DB.100062
5	SuperannuationContribution.EmployerContributions.Amount	1. Mandatory 2. Must be greater than or equal to zero 3. Cents should not be provided 4. Must not exceed the maximum value of \$99,999,999	1. MIG 2. MIG 3. MIG 4. MIG	1. WA.OSR.DB.100063 2. WA.OSR.DB.100065 3. WA.OSR.DB.100064 4. WA.OSR.DB.100066
6	FringeBenefitsTax.Type2GrossedUp.Amount	1. Mandatory 2. Must be greater than or equal to zero 3. Cents should not be provided 4. Must not exceed the maximum value of \$99,999,999	1. MIG 2. MIG 3. MIG 4. MIG	1. WA.OSR.DB.100067 2. WA.OSR.DB.100069 3. WA.OSR.DB.100068 4. WA.OSR.DB.100070
7	Remuneration.Fees.Directors.Amount	1. Mandatory 2. Must be greater than or equal to zero 3. Cents should not be provided 4. Must not exceed the maximum value of \$99,999,999	1. MIG 2. MIG 3. MIG 4. MIG	1. WA.OSR.DB.100075 2. WA.OSR.DB.100074 3. WA.OSR.DB.100076 4. WA.OSR.DB.100078
8	Remuneration.EmploymentTermination.Payments.Amount	1. Mandatory 2. Must be greater than or equal to zero 3. Cents should not be provided 4. Must not exceed the maximum value of \$99,999,999	1. MIG 2. MIG 3. MIG 4. MIG	1. WA.OSR.DB.100079 2. WA.OSR.DB.100081 3. WA.OSR.DB.100080 4. WA.OSR.DB.100082
9	Remuneration.SpecifiedTaxableBenefits.Amount	1. Mandatory 2. Must be greater than or equal to zero 3. Cents should not be provided 4. Must not exceed the maximum value of \$99,999,999	1. MIG 2. MIG 3. MIG 4. MIG	1. WA.OSR.DB.100083 2. WA.OSR.DB.100085 3. WA.OSR.DB.100084 4. WA.OSR.DB.100086

Deleted: FringeBenefitsTax.Type1PlusType2GrossedUpAdjusted.Amount

Deleted: 2

10	Remuneration.EmployeeSharesAndOptions.Amount	1. <u>Mandatory</u> 2. <u>Must be greater than or equal to zero</u> 3. <u>Cents should not be provided</u> 4. <u>Must not exceed the maximum value of \$99,999,999</u>	1. <u>MIG</u> 2. <u>MIG</u> 3. <u>MIG</u> 4. <u>MIG</u>	1. <u>WA.OSR.DB.100145</u> 2. <u>WA.OSR.DB.100147</u> 3. <u>WA.OSR.DB.100146</u> 4. <u>WA.OSR.DB.100148</u>	
11	Remuneration.WagesAndSalaries.TaxablePayrollOther.Amount	1. Mandatory 2. Must be greater than or equal to zero 3. Cents should not be provided 4. Must not exceed the maximum value of \$99,999,999	1. MIG 2. MIG 3. MIG 4. MIG	1. WA.OSR.DB.100087 2. WA.OSR.DB.100089 3. WA.OSR.DB.100088 4. WA.OSR.DB.100090	Deleted: 0
12	Remuneration.WagesAndSalaries.ApprenticesAndTrainees.Amount	1. Mandatory 2. Must be greater than or equal to zero 3. Cents should not be provided 4. Must not exceed the maximum value of \$99,999,999	1. MIG 2. MIG 3. MIG 4. MIG	1. WA.OSR.DB.100091 2. WA.OSR.DB.100093 3. WA.OSR.DB.100092 4. WA.OSR.DB.100094	Deleted: 1
13	EmploymentConditions.WorkersCompensationPayments.Amount	1. Mandatory 2. Must be greater than or equal to zero 3. Cents should not be provided 4. Must not exceed the maximum value of \$99,999,999	1. MIG 2. MIG 3. MIG 4. MIG	1. WA.OSR.DB.100095 2. WA.OSR.DB.100097 3. WA.OSR.DB.100096 4. WA.OSR.DB.100098	Deleted: 2
14	Remuneration.WagesandSalaries.DefenceForces.Amount	1. Mandatory 2. Must be greater than or equal to zero 3. Cents should not be provided 4. Must not exceed the maximum value of \$99,999,999	1. MIG 2. MIG 3. MIG 4. MIG	1. WA.OSR.DB.100099 2. WA.OSR.DB.100101 3. WA.OSR.DB.100100 4. WA.OSR.DB.100102	Deleted: 3
15	Remuneration.WagesAndSalaries.OverseasExempt.Amount	1. Mandatory 2. Must be greater than or equal to zero 3. Cents should not be provided 4. Must not exceed the maximum value of \$99,999,999	1. MIG 2. MIG 3. MIG 4. MIG	1. WA.OSR.DB.100103 2. WA.OSR.DB.100105 3. WA.OSR.DB.100104 4. WA.OSR.DB.100106	Deleted: 4 Deleted: Remuneration.Wage sAndSalaries.OverseasExempt After6Months.Amount
16	Remuneration.WagesAndSalaries.ExemptOther.Amount	1. Mandatory 2. Must be greater than or equal to zero 3. Cents should not be provided 4. Must not exceed the maximum value of \$99,999,999	1. MIG 2. MIG 3. MIG 4. MIG	1. WA.OSR.DB.100107 2. WA.OSR.DB.100109 3. WA.OSR.DB.100108 4. WA.OSR.DB.100110	Deleted: 5
17	Remuneration.WagesAndSalaries.TaxableStateAndInterstateTotal.Amount	1. If Lodgement.Frequency.Code = "Annually" AND the GroupStatus context of the Reporting Party = "NGE" AND Employer.Conditions.EmploymentStateInterstateConditional.Code = StateAndInterstate then Mandatory 2. Must be greater than or equal to zero 3. Cents should not be provided 4. Should be more than WA wages less Exemptions 5. Must not exceed the maximum value of \$99,999,999,999	1. Agency/MIG 2. MIG 3. MIG 4. MIG 5. MIG	1. WA.OSR.DB.100120 2. WA.OSR.DB.100122 3. WA.OSR.DB.100121 4. WA.OSR.DB.100126 5. WA.OSR.DB.100051	Deleted: Deleted: Deleted: Deleted: 6

Deleted: 2

18	Remuneration.WagesAndSalaries.TaxableGroupStateAndInterstateTotal.Amount	1. If Lodgement.Frequency.Code = "Annually" AND the GroupStatus context of the Reporting Party = "DGE" AND Employer.Conditions.EmploymentStateInterstateConditional.Code = StateAndInterstate then Mandatory 2. Must be greater than or equal to zero 3. Cents should not be provided 4. Should be more than WA wages less Exemptions 5. Must not exceed the maximum value of \$99,999,999,999	1. Agency/MIG 2. MIG 3. MIG 4. MIG 5. MIG	1. WA.OSR.DB.100123 2. WA.OSR.DB.100125 3. WA.OSR.DB.100124 4. WA.OSR.DB.100126 5. WA.OSR.DB.100044
----	--	---	---	---

- Deleted:
- Deleted:
- Deleted:
- Deleted: 7

Deleted: 2

5.3.2 Response Calculate Periodic Payroll Tax - Message

5.3.2.1 Discoverable Taxonomy Set References

Schema	ptlwa.0001.calculate.response.02.02.report.xsd	Deleted: 01
Linkbases	ptlwa.0001.calculate.response.02.02.presLink.xml	Deleted: 01
	ptlwa.0001.calculate.response.02.02.labLinkInfoCls.xml	Deleted: 01
	ptlwa.0001.calculate.response.02.02.refLink.xml	Deleted: 01
	ptlwa.0001.calculate.response.02.02.defLink.xml	Deleted: 01
		Deleted: Example Inst ... [4]
		Formatted: Bullets and Numbering

5.3.2.2 Standard Business Document Header Content

Attribute Name	Optionality	Rules/Values
Message Type Text	Mandatory	Value must be "ptlwa.0001.calculate.response"

5.3.2.3 Standard Business Document Body Content

The following describes the facts and context required to be supplied within the XBRL instance document populated into the SBDB element BusinessDocument.instance.text

5.3.2.3.1 Response Calculate XBRL Context

Context Spec	Hypercube Name	Associated Segment Dimensions	Instructions/Rules
ReportingParty	ReportingPartyWACCCI	ReportPartyType, AustralianStatesTerritoriesAndOffShoreAreas	<p>1. If the Report.Amendment.Indicator = 'false' one Context for each Periodic Return is required (see Rule 4 and 5). If the Report.Amendment.Indicator = "true" only one Context is required (disregard rules 4 and 5)</p> <p>2. The Start Date will be set to the start date relevant to the periodic return.</p> <p>3. The End Date will be set to the end date relevant to the periodic return.</p> <p>4. If Lodgment.Frequency.Code = "Monthly" or "Annually" then only one Context must be used with the instance document.</p> <p>5. If Lodgment.Frequency.Code = "Quarterly" then up to three Contexts must be used with the instance document. The Period.Unique.Identifier links each Obligation within the Quarter.</p>
GroupStatus	ReportingPartyWACCCIEmployerGroupStatus	ReportPartyType, AustralianStatesTerritoriesAndOffShoreAreas, EmployerGroupStatus	<p>1. If the Report.Amendment.Indicator = 'false' one Context for each Periodic Return is required (see Rule 4 and 5). If the Report.Amendment.Indicator = "true" only one Context is required (disregard rules 4 and 5)</p> <p>2. The Start Date will be set to the start date relevant to the periodic return.</p> <p>3. The End Date will be set to the end date relevant to the periodic return.</p> <p>4. If Lodgment.Frequency.Code = "Monthly" or "Annually" then only one Context must be used with the instance document.</p> <p>5. If Lodgment.Frequency.Code = "Quarterly" then up to three Contexts must be used with the instance document. The Period.Unique.Identifier links each Obligation within the Quarter.</p>
GovernmentAgency	GovernmentAgency	ReportPartyType	<p>1. If the Report.Amendment.Indicator = 'false' one Context for each Periodic Return is required (see Rule 4 and 5). If the Report.Amendment.Indicator = "true" only one Context is required (disregard rules 4 and 5)</p> <p>2. The Start Date will be set to the start date relevant to the periodic return.</p> <p>3. The End Date will be set to the end date relevant to the periodic return.</p> <p>4. If Lodgment.Frequency.Code = "Monthly" or "Annually" then only one Context must be used with the instance document.</p> <p>5. If Lodgment.Frequency.Code = "Quarterly" then up to three Contexts must be used with the instance document. The Period.Unique.Identifier links each Obligation within the Quarter.</p>

5.3.2.3.2 Response Calculate Periodic Message Content Table

The following table contains the facts required in the instance document.

Context - ReportingParty		
Seq No.	XBRL Fact	Rules
1.	Identifiers.StateRevenueOfficeClientNumber.Identifier	1. Mandatory
2.	OrganisationNameDetails(Tuple One)	
2.1.	OrganisationNameDetails.OrganisationalNameType.Code	1. Mandatory
2.2.	OrganisationNameDetails.OrganisationalName.Text	1. Mandatory
3.	Report.Name.Text	1. Mandatory
4.	Report.Type.Code	1. Mandatory
5.	Period.Unique.Identifier	1. Conditional. Mandatory if Lodgment.Frequency.Code = "Quarterly" and Report.Amendment.Indicator = "false"
6.	Lodgment.Due.Date	1. Conditional. Mandatory if Report.Amendment.Indicator = "false"
7.	PayrollTax.Deduction.CalculatedTotal.Amount	1. Optional
8.	PayrollTax.TaxableCalculated.Amount	1. Optional
9.	PayrollTax.PayableTaxCalculated.Amount	1. Optional
10.	PayrollTax.AccountBalanceBroughtForwardPayableorRefundable.Amount	1. Optional
11.	PayrollTax.Payable.Amount	1. Optional
12.	ObligationDetail(Tuple zero to many)	
12.1.	Lodgment.Frequency.Code	1. Mandatory
13.	PaymentReference (Tuple: zero to one)	
13.1.	PaymentMechanism.PaymentMethod.Code	1. Optional but if supplied will be "DirectDebit"

Context - GroupStatus		
Seq No.	XBRL Fact	Rules / Instructions
1.	BusinessDocument.GovernmentGeneratedIdentifier.Text	1. Mandatory
2.	Remuneration.WagesAndSalaries.GrossStateIncludingExemptWagesTotal.Amount	1. Mandatory
3.	Remuneration.WagesandSalaries.ExemptTotal.Amount	1. Mandatory
4.	Remuneration.WagesAndSalaries.TaxableStateTotal.Amount	1. Mandatory

Context – GovernmentAgency		
Seq No.	XBRL Fact	Rules / Instructions
1.	TaxRate(Tuple zero to many)	1. When the Lodgment.Frequency.Code = “Annually” and the group status = “DGE” or “GE” then this will tuple will not be included in the response.
1.1.	TaxRate.Type.Code	1. Mandatory
1.2.	TaxRate.Designation.Rate	1. Mandatory
2.	PaymentMechanism(Tuple zero to one)	
2.1.	PaymentMechanism.PaymentMethod.Code	1. Optional but if supplied will be “DirectDebit”
2.2.	DirectDebit(Tuple one to many)	
2.2.1.	PaymentMechanism.DirectDebitAccount.Identifier	1. Mandatory
2.2.2.	PaymentMechanism.DirectDebitName.Text	1. Mandatory
2.2.3.	FinancialInstitutionAccount(Tuple zero)	
2.2.3.1.	FinancialInstitutionAccount.BankStateBranch.Number	1. Not supplied
2.2.3.2.	FinancialInstitutionAccount.FinancialInstitutionAccount.Number	1. Not supplied
2.2.3.3.	FinancialInstitutionAccount.FinancialInstitutionAccountName.Text	1. Not supplied
2.2.3.4.	FinancialInstitutionAccount.FinancialInstitutionBranchName.Text	1. Not supplied
2.2.3.5.	FinancialInstitutionAccount.FinancialInstitutionName.Text	1. Not supplied

Deleted: Optional

Deleted: Optional

5.4 LODGE PERIODIC PAYROLL TAX SPECIFICATIONS

Interaction Name	Lodge Periodic PayrollTax
Description	The purpose of this interaction is for the business to formally lodge their periodic tax return and optionally authorise a payment via Direct Debit.
Stakeholders	Business, State Revenue Offices
Pre-conditions	Business must be registered with WA OSR and have calculated their tax liability using the calculate service to do this.
Post-conditions	Success – The User has successfully lodged their return and will be sent a transaction identifier and a message indicating that their report has been received and will be processed by WA OSR. Failure – The User will receive an Error message.
Initiating party	Business
Channel	SBR
Core Service Map	Lodge

5.4.1 Request Lodge Periodic Payroll Tax - Message

5.4.1.1 Discoverable Taxonomy Set References

Schema	ptlwa.0001.lodge.request.02 02 .report.xsd	Deleted: 01
Linkbases	ptlwa.0001.lodge.request.02 02 .defLink.xml	Deleted: 01
	ptlwa.0001.lodge.request.02 02 .labLinkInfoCls.xml	Deleted: 01
	ptlwa.0001.lodge.request.02 02 .presLink.xml	Deleted: 01
	ptlwa.0001.lodge.request.02 02 .refLink.xml	Deleted: 01
		Deleted: Example Inst ... [5]
		Formatted: Bullets and Numbering

5.4.1.2 Standard Business Document Header Content

The WIG provides the specification of the SBDH. The following table specifies the message specific data element values or any variations to the WIG.

Attribute Name	Optionality	Rules/Instructions	Rule Imp	Msg Code
Message Type Text	Mandatory	Value must be "ptlwa.0001.lodge.request"	1. MIG	1.WA.OSR.XSLT.001012

5.4.1.3 Standard Business Document Body Content

The following describes the facts and context required to be supplied within the XBRL instance document populated into the SBDB element BusinessDocument.instance.text.

5.4.1.3.1 Request Lodge Periodic XBRL Context

Context Spec	Hypercube Name	Associated Segment Dimensions	Instructions/Rules	Rule Imp.	SBR Message Code
ReportingParty	ReportingPartyWACCCI	ReportPartyType, AustralianStatesTerritoriesAndOffShoreAreas	1. There must be only one Context within the instance document. 2. The Start Date should be set to the start date relevant to the earliest periodic return. 3. The End Date should be set to the end date relevant to the latest periodic return.	1. MIG 2. MIG 3. MIG	1. WA.OSR.XSLT.001043 2. WA.OSR.DB.100028 3. WA.OSR.DB.100030
GroupStatus	ReportingPartyWACCCIEmployerGroupStatus	ReportPartyType, AustralianStatesTerritoriesAndOffShoreAreas, EmployerGroupStatus	1. If the Report.Amendment.Indicator = 'false' one Context for each Periodic Return is required (see Rule 4 and 5). If the Report.Amendment.Indicator = "true" only one Context is required (disregard rules 4 and 5). 2. The Start Date should be set to the start date relevant to the periodic return. 3. The End Date should be set to the end date relevant to the periodic return. 4. If Lodgment.Frequency.Code = "Monthly" or "Annually" then only one Context must be used with the instance document. 5. If Lodgment.Frequency.Code = "Quarterly" then up to three Contexts must be used with the instance document. The Period.Unique.Identifier links each Obligation within the Quarter.	1. MIG 2. MIG 3. MIG 4. MIG 5. MIG	1. WA.OSR.WS.000006 2. WA.OSR.DB.100028 or WA.OSR.DB.100027 3. WA.OSR.DB.100030 or WA.OSR.DB.100029 4. WA.OSR.WS.000006 or WA.OSR.DB.100037 5. WA.OSR.WS.000006 or WA.OSR.DB.100037

5.4.1.3.2 Request Lodge Message Content Table

The following table contains the facts required in the instance document.

Context - ReportingParty				
Seq No.	XBRL Fact	Rules	Rule Imp.	SBR Message-Code
1.	Identifiers.StateRevenueOfficeClientNumber.Identifier	1. Mandatory 2. This is the Client id as registered with WAOSR	1. MIG 2. Agency	1. WA.OSR.DB.100134 2. WA.OSR.DB.100134
2.	OrganisationNameDetails(Tuple One)			
2.1.	OrganisationNameDetails.OrganisationalNameType.Code	1. Mandatory and must be set to "MTR"	1. MIG	1. WA.OSR.DB.100136
2.2.	OrganisationNameDetails.OrganisationalName.Text	1. Mandatory 2. This is the organisation name as registered with WAOSR	1. MIG 2. Agency	1. WA.OSR.DB.100135 2. WA.OSR.DB.100050
3.	ObligationDetail(Tuple One)			
3.1.	Report.Name.Text	1. Mandatory	1. Agency	1. WA.OSR.DB.100142
3.2.	Report.Type.Code	1. Mandatory	1. Agency	1. WA.OSR.DB.100143
3.3.	Lodgment.Frequency.Code	1. Mandatory	1. Agency	1. WA.OSR.DB.100138
3.4.	Period.Unique.Identifier	1. Conditional. Mandatory when Frequency Code = "Quarterly"	1. MIG	1. WA.OSR.DB.100139
3.5.	Lodgment.Due.Date	1. Mandatory	1. Agency	1. WA.OSR.DB.100140
3.6.	Report.Amendment.Indicator	1. Mandatory and should be set to "false" for a lodgement and "true" for a Wage Adjustment.	1. MIG	1. WA.OSR.DB.100035
3.7.	PayrollTax.Payable.Amount	1. Conditional. Mandatory when PaymentMethod.Code = "Bpay" or "DirectCredit"	1. Agency	1. WA.OSR.DB.100043
3.8.	PayrollTaxPayment(Tuple zero to one)			
3.8.1.	PaymentRecord.Payment.Amount	1. Conditional. Mandatory when PaymentMethod.Code = "DirectDebit". Not Required for other methods. 2. Must be greater than or equal to zero	1. MIG 2. MIG	1. WA.OSR.DB.100045 2. WA.OSR.DB.100046
3.8.2.	PaymentReference(Tuple zero to one)			
3.8.2.1.	PaymentMechanism.PaymentMethod.Code	1. Mandatory and must be set to "Bpay", "DirectCredit", "DirectDebit" or "None".	1. MIG	1. WA.OSR.DB.100131
3.8.2.2.	DirectDebit(Tuple zero to one)			
3.8.2.2.1.	PaymentMechanism.DirectDebitAccount.Identifier	1. Conditional. Mandatory when PaymentMechanism.PaymentMethod.Code = "DirectDebit".	1. MIG	1. WA.OSR.DB.100048 or WA.OSR.DB.100049

Deleted: 3

Context - ReportingParty

Seq No.	XBRL Fact	Rules	Rule Imp.	SBR Message Code
3.8.2.2.2.	PaymentMechanism.DirectDebitName.Text	1. Conditional. Mandatory when PaymentMechanism.PaymentMethod.Code = "DirectDebit".	1. MIG	1. WA.OSR.DB.100047
3.8.2.2.3.	FinancialInstitutionAccount(Tuple zero)			
3.8.2.2.3.1.	FinancialInstitutionAccount.BankStateBranch.Number	1. Not Required	NA	NA
3.8.2.2.3.2.	FinancialInstitutionAccount.FinancialInstitutionAccount.Number	1. Not Required	NA	NA
3.8.2.2.3.3.	FinancialInstitutionAccount.FinancialInstitutionAccountName.Text	1. Not Required	NA	NA
3.8.2.2.3.4.	FinancialInstitutionAccount.FinancialInstitutionBranchName.Text	1. Not Required	NA	NA
3.8.2.2.3.5.	FinancialInstitutionAccount.FinancialInstitutionName.Text	1. Not Required	NA	NA

Formatted Table

Context - GroupStatus

Seq No.	XBRL Fact	Rules	Rule Imp.	SBR Message Code
1.	BusinessDocument.GovernmentGeneratedIdentifier.Text	1. Mandatory	1. Agency	1. WA.OSR.DB.100023
2.	Remuneration.WagesandSalaries.Payments.Amount	1. Mandatory 2. Must be greater than or equal to zero 3. Cents should not be provided 4. Must not exceed the maximum value of \$99,999,999	1. MIG 2. MIG 3. MIG 4. MIG	1. WA.OSR.DB.100055 2. WA.OSR.DB.100057 3. WA.OSR.DB.100056 4. WA.OSR.DB.100058
3.	Remuneration.WagesAndSalaries.ContractorsAndConsultantsPayments.Amount	1. Mandatory 2. Must be greater than or equal to zero 3. Cents should not be provided 4. Must not exceed the maximum value of \$99,999,999	1. MIG 2. MIG 3. MIG 4. MIG	1. WA.OSR.DB.100071 2. WA.OSR.DB.100073 3. WA.OSR.DB.100072 4. WA.OSR.DB.100074
4.	Remuneration.CommissionsBonusesandAllowances.Amount	1. Mandatory 2. Must be greater than or equal to zero 3. Cents should not be provided 4. Must not exceed the maximum value of \$99,999,999	1. MIG 2. MIG 3. MIG 4. MIG	1. WA.OSR.DB.100059 2. WA.OSR.DB.100061 3. WA.OSR.DB.100060 4. WA.OSR.DB.100062
5.	SuperannuationContribution.EmployerContributions.Amount	1. Mandatory 2. Must be greater than or equal to zero 3. Cents should not be provided 4. Must not exceed the maximum value of \$99,999,999	1. MIG 2. MIG 3. MIG 4. MIG	1. WA.OSR.DB.100063 2. WA.OSR.DB.100065 3. WA.OSR.DB.100064 4. WA.OSR.DB.100066

Deleted: 3

Context - GroupStatus					
Seq No.	XBRL Fact	Rules	Rule Imp.	SBR Message Code	Formatted Table
6.	FringeBenefitsTax.Type2GrossedUp.Amount	1. Mandatory 2. Must be greater than or equal to zero 3. Cents should not be provided 4. Must not exceed the maximum value of \$99,999,999	1. MIG 2. MIG 3. MIG 4. MIG	1. WA.OSR.DB.100067 2. WA.OSR.DB.100069 3. WA.OSR.DB.100068 4. WA.OSR.DB.100070	Deleted: FringeBenefitsTax.Type1PlusType2GrossedUpAdjusted.Amount
7.	Remuneration.Fees.Directors.Amount	1. Mandatory 2. Must be greater than or equal to zero 3. Cents should not be provided 4. Must not exceed the maximum value of \$99,999,999	1. MIG 2. MIG 3. MIG 4. MIG	1. WA.OSR.DB.100075 2. WA.OSR.DB.100074 3. WA.OSR.DB.100076 4. WA.OSR.DB.100078	
8.	Remuneration.EmploymentTermination.Payments.Amount	1. Mandatory 2. Must be greater than or equal to zero 3. Cents should not be provided 4. Must not exceed the maximum value of \$99,999,999	1. MIG 2. MIG 3. MIG 4. MIG	1. WA.OSR.DB.100079 2. WA.OSR.DB.100081 3. WA.OSR.DB.100080 4. WA.OSR.DB.100082	
9.	Remuneration.SpecifiedTaxableBenefits.Amount	1. Mandatory 2. Must be greater than or equal to zero 3. Cents should not be provided 4. Must not exceed the maximum value of \$99,999,999	1. MIG 2. MIG 3. MIG 4. MIG	1. WA.OSR.DB.100083 2. WA.OSR.DB.100085 3. WA.OSR.DB.100084 4. WA.OSR.DB.100086	
10.	Remuneration.EmployeeSharesAndOptions.Amount	1. Mandatory 2. Must be greater than or equal to zero 3. Cents should not be provided 4. Must not exceed the maximum value of \$99,999,999	1. MIG 2. MIG 3. MIG 4. MIG	1. WA.OSR.DB.100145 2. WA.OSR.DB.100147 3. WA.OSR.DB.100146 4. WA.OSR.DB.100148	
11.	Remuneration.WagesAndSalaries.TaxablePayrollOther.Amount	1. Mandatory 2. Must be greater than or equal to zero 3. Cents should not be provided 4. Must not exceed the maximum value of \$99,999,999	1. MIG 2. MIG 3. MIG 4. MIG	1. WA.OSR.DB.100087 2. WA.OSR.DB.100089 3. WA.OSR.DB.100088 4. WA.OSR.DB.100090	Formatted: Bullets and Numbering
12.	Remuneration.WagesAndSalaries.ApprenticesAndTrainees.Amount	1. Mandatory 2. Must be greater than or equal to zero 3. Cents should not be provided 4. Must not exceed the maximum value of \$99,999,999	1. MIG 2. MIG 3. MIG 4. MIG	1. WA.OSR.DB.100091 2. WA.OSR.DB.100093 3. WA.OSR.DB.100092 4. WA.OSR.DB.100094	Formatted: Bullets and Numbering
13.	EmploymentConditions.WorkersCompensationPayments.Amount	1. Mandatory 2. Must be greater than or equal to zero 3. Cents should not be provided 4. Must not exceed the maximum value of \$99,999,999	1. MIG 2. MIG 3. MIG 4. MIG	1. WA.OSR.DB.100095 2. WA.OSR.DB.100097 3. WA.OSR.DB.100096 4. WA.OSR.DB.100098	Formatted: Bullets and Numbering
14.	Remuneration.WagesandSalaries.DefenceForces.Amount	1. Mandatory 2. Must be greater than or equal to zero 3. Cents should not be provided 4. Must not exceed the maximum value of \$99,999,999	1. MIG 2. MIG 3. MIG 4. MIG	1. WA.OSR.DB.100099 2. WA.OSR.DB.100101 3. WA.OSR.DB.100100 4. WA.OSR.DB.100102	Formatted: Bullets and Numbering

Deleted: 3

Context - GroupStatus					
Seq No.	XBRL Fact	Rules	Rule Imp.	SBR Message Code	Formatted Table
15.	Remuneration.WagesAndSalaries.OverseasExempt.Amount	1. Mandatory 2. Must be greater than or equal to zero 3. Cents should not be provided 4. Must not exceed the maximum value of \$99,999,999	1. MIG 2. MIG 3. MIG 4. MIG	1. WA.OSR.DB.100103 2. WA.OSR.DB.100105 3. WA.OSR.DB.100104 4. WA.OSR.DB.100106	Formatted: Bullets and Numbering
16.	Remuneration.WagesAndSalaries.ExemptOther.Amount	1. Mandatory 2. Must be greater than or equal to zero 3. Cents should not be provided 4. Must not exceed the maximum value of \$99,999,999	1. MIG 2. MIG 3. MIG 4. MIG	1. WA.OSR.DB.100107 2. WA.OSR.DB.100109 3. WA.OSR.DB.100108 4. WA.OSR.DB.100110	Deleted: Remuneration.WagesAndSalaries.OverseasExemptAfter6Months.Amount Formatted: Bullets and Numbering
17.	Remuneration.WagesAndSalaries.GrossStateIncludingExemptWagesTotal.Amount	1. Mandatory 2. Derived Value 3. Must be greater than or equal to zero 4. Cents should not be provided.	1. MIG 2. Agency 3. MIG 4. MIG	1. WA.OSR.DB.100111 2. WA.OSR.DB.100128 3. WA.OSR.DB.100113 4. WA.OSR.DB.100112	Formatted: Bullets and Numbering
18.	Remuneration.WagesandSalaries.ExemptTotal.Amount	1. Mandatory 2. Derived Value 3. Must be greater than or equal to zero 4. Cents should not be provided.	1. MIG 2. Agency 3. MIG 4. MIG	1. WA.OSR.DB.100114 2. WA.OSR.DB.100129 3. WA.OSR.DB.100116 4. WA.OSR.DB.100115	Formatted: Bullets and Numbering
19.	Remuneration.WagesAndSalaries.TaxableStateTotal.Amount	1. Mandatory 2. Derived Value 3. Must be greater than or equal to zero 4. Cents should not be provided.	1. MIG 2. Agency 3. MIG 4. MIG	1. WA.OSR.DB.100117 2. WA.OSR.DB.100130 3. WA.OSR.DB.100119 4. WA.OSR.DB.100118	Formatted: Bullets and Numbering
20.	Remuneration.WagesAndSalaries.TaxableStateAndInterstateTotal.Amount	1. If Lodgement.Frequency.Code = Annually AND the GroupStatus context of the Reporting Party = "NGE" AND Employer.Conditions.EmploymentStateInterstateConditional.Code = StateAndInterstate then Mandatory 2. Must be greater than or equal to zero 3. Cents should not be provided 4. Should be more than WA wages less Exemptions 5. Must not exceed the maximum value of \$99,999,999,999	1. Agency/MIG 2. MIG 3. MIG 4. MIG 5. MIG	1. WA.OSR.DB.100120 2. WA.OSR.DB.100122 3. WA.OSR.DB.100121 4. WA.OSR.DB.100126 5. WA.OSR.DB.100051	Deleted: Deleted: Deleted: Formatted: Bullets and Numbering
21.	Remuneration.WagesAndSalaries.TaxableGroupStateAndInterstateTotal.Amount	1. If Lodgement.Frequency.Code = Annually AND the GroupStatus context of the Reporting Party = "DGE" AND Employer.Conditions.EmploymentStateInterstateConditional.Code = StateAndInterstate then Mandatory 2. Must be greater than or equal to zero 3. Cents should not be provided 4. Should be more than WA wages less Exemptions 5. Must not exceed the maximum value of \$99,999,999,999	1. Agency/MIG 2. MIG 3. MIG 4. MIG 5. MIG	1. WA.OSR.DB.100123 2. WA.OSR.DB.100125 3. WA.OSR.DB.100124 4. WA.OSR.DB.100126 5. WA.OSR.DB.100044	Deleted: Deleted: Deleted: Formatted: Bullets and Numbering
					Deleted: 3

5.4.2 Response Lodge Periodic Payroll Tax - Message

5.4.2.1 Discoverable Taxonomy Set References

Schema	ptlwa.0001.lodge.response.02.02.report.xsd
Linkbases	ptlwa.0001.lodge.response.02.02.defLink.xml
	ptlwa.0001.lodge.response.02.02.labLinkInfoCls.xml
	ptlwa.0001.lodge.response.02.02.presLink.xml
	ptlwa.0001.lodge.response.02.02.refLink.xml

Deleted: 01

Deleted: 01

Deleted: 01

Deleted: 01

Deleted: 01

Deleted: Example Instance

Deleted: ptlwa.0001.lodge.res
ponse.02.01.sample.instance.x
ml

5.4.2.2 Standard Business Document Header Content

Attribute Name	Optionality	Rules/Values
Message Type Text	Mandatory	Value must be "ptlwa.0001.lodge.response"
Lodgment.Receipt.Identifier	Mandatory	
Lodgment.Receipt.Datetime	Mandatory	A full time and date (in UTC) will be provided in the following format: YYYY-MM-DDTHH:MM:SS

5.4.2.3 Standard Business Document Body Content

The following describes the facts and context required to be supplied within the XBRL instance document populated into the SBDB element BusinessDocument.instance.text.

5.4.2.3.1 Response Lodge XBRL Context

Context Spec	Hypercube Name	Associated Segment Dimensions	Instructions/Rules
ReportingParty	ReportingPartyWACCCI	ReportPartyType, AustralianStatesTerritoriesAndOffShoreAreas	1. There must be only one Context within the instance document. 2. The Start Date should be set to the start date relevant to the periodic return. 3. The End Date should be set to the end date relevant to the periodic return.
GovernmentAgency	GovernmentAgency	ReportPartyType	1. There must be only one Context within the instance document. 2. The Start Date should be set to the start date relevant to the periodic return. 3. The End Date should be set to the end date relevant to the periodic return.

5.4.2.3.2 Response Lodge Message Content Table

The following table contains the facts required in the instance document.

Important Notes:

The WA Department of Treasury and Finance ABN will be provided in the GovernmentAgency context and is to be displayed with the element OrganisationNameDetails.OrganisationalName.Text (Context Spec GovernmentAgency) at the top of the confirmation screen.

Context - ReportingParty		
Seq No.	XBRL Fact	Rules
1	Identifiers.StateRevenueOfficeClientNumber.Identifier	1. Mandatory
2	OrganisationNameDetails(Tuple One)	
2.1	OrganisationNameDetails.OrganisationalNameType.Code	1. Mandatory
2.2	OrganisationNameDetails.OrganisationalName.Text	1. Mandatory
3	ObligationDetail(Tuple One)	
3.1	Report.Name.Text	1. Mandatory
3.2	Report.Type.Code	1. Mandatory
3.3	Lodgment.Frequency.Code	1. Mandatory
3.4	Lodgment.Receipt.Identifier	1. Mandatory
3.5	PayrollTax.Payable.Amount	1. Conditional. Mandatory when PaymentMethod.Code = "Bpay" or "DirectCredit"
3.6	PayrollTaxPayment(Tuple One)	
3.6.1	PaymentRecord.ArrangedPayment.Datetime	1. Conditional. Mandatory when PaymentMethod.Code = "DirectDebit"
3.6.2	PaymentRecord.Due.Date	1. Optional
3.6.3	PaymentRecord.Payment.Amount	1. Conditional. Mandatory when PaymentMethod.Code = "DirectDebit"
3.6.4	PaymentReference (Tuple: zero to one)	
3.6.4.1	PaymentMechanism.PaymentMethod.Code	1. Mandatory and must be set to "Bpay", "DirectCredit", "DirectDebit" or "None".
3.6.4.2	PaymentMechanism.CustomerReference.Number	1. Conditional. Mandatory when PaymentMethod.Code = "Bpay" or "DirectCredit"

Deleted: .

Context – GovernmentAgency		
Seq No.	XBRL Fact	Rules / Instructions
1.	OrganisationNameDetails(Tuple One)	
1.1.	OrganisationNameDetails.OrganisationalNameType.Code	1.Mandatory
1.2.	OrganisationNameDetails.OrganisationalName.Text	1.Mandatory
2.	PaymentMechanism(Tuple zero to many)	

Formatted: Bullets and Numbering

Deleted: 2

Context – GovernmentAgency		
Seq No.	XBRL Fact	Rules / Instructions
2.1.1.	PaymentMechanism.PaymentMethod.Code	<p>1. Where Payment Mechanism.Payment Method.Code = Bpay the following will be provided: PaymentMechanism.BpayBillers.Code PaymentMechanism.CustomerReference.Number PayrollTax.Payable.Amount</p> <p>2. Where = DirectCredit the following will be provided: PaymentMechanism.CustomerReference.Number FinancialInstitutionAccount.BankStateBranch.Number FinancialInstitutionAccount.FinancialInstitutionAccount.Number FinancialInstitutionAccount.FinancialInstitutionAccountName.Text PayrollTax.Payable.Amount</p> <p>3. Where = DirectDebit the following will be provided: PaymentMechanism.DirectDebitAccount.Identifier PaymentMechanism.DirectDebitName.Text PaymentRecord.ArrangedPayment.Datetime PaymentRecord.Payment.Amount</p> <p>4. Where = None no payment data will be provided</p>
2.1.2.	DirectDebit(Tuple zero to one)	
2.1.2.1.	PaymentMechanism.DirectDebitAccount.Identifier	1. Conditional. Mandatory when PaymentMethod.Code = "DirectDebit"
2.1.2.2.	PaymentMechanism.DirectDebitName.Text	1. Conditional. Mandatory when PaymentMethod.Code = "DirectDebit"
2.1.2.2.1.	FinancialInstitutionAccount(Tuple One)	
2.1.2.2.2.	FinancialInstitutionAccount.BankStateBranch.Number	1. Not Required
2.1.2.2.3.	FinancialInstitutionAccount.FinancialInstitutionAccount.Number	1. Not Required
2.1.2.2.4.	FinancialInstitutionAccount.FinancialInstitutionAccountName.Text	1. Not Required
2.1.2.2.5.	FinancialInstitutionAccount.FinancialInstitutionBranchName.Text	1. Not Required
2.1.2.2.6.	FinancialInstitutionAccount.FinancialInstitutionName.Text	1. Not Required
2.1.3.	Bpay(Tuple zero to one)	
2.1.3.1.	PaymentMechanism.BpayBillers.Code	1. Conditional. Mandatory when PaymentMethod.Code = "Bpay"
2.1.4.	DirectCredit(Tuple zero to one)	
2.1.4.1.	PaymentMechanism.DirectCreditAccount.Identifier	1. Not Required
2.1.4.2.	PaymentMechanism.DirectCreditName.Text	1. Not Required
2.1.4.3.	FinancialInstitutionAccount(Tuple One)	

Formatted: Bullets and Numbering

Formatted: Bullets and Numbering

Formatted: Bullets and Numbering

Formatted: Bullets and Numbering

Formatted: Bullets and Numbering

Formatted: Bullets and Numbering

Formatted: Bullets and Numbering

Formatted: Bullets and Numbering

Formatted: Bullets and Numbering

Formatted: Bullets and Numbering

Formatted: Bullets and Numbering

Formatted: Bullets and Numbering

Formatted: Bullets and Numbering

Formatted: Bullets and Numbering

Formatted: Bullets and Numbering

Formatted: Bullets and Numbering

Deleted: 2

Context – GovernmentAgency		
Seq No.	XBRL Fact	Rules / Instructions
2.1.4.3.1.	FinancialInstitutionAccount.BankStateBranch.Number	1. Conditional. Mandatory when PaymentMethod.Code = "DirectCredit" ←
2.1.4.3.2.	FinancialInstitutionAccount.FinancialInstitutionAccount.Number	1. Conditional. Mandatory when PaymentMethod.Code = "DirectCredit" ←
2.1.4.3.3.	FinancialInstitutionAccount.FinancialInstitutionAccountName.Text	1. Conditional. Mandatory when PaymentMethod.Code = "DirectCredit" ←
2.1.4.3.4.	FinancialInstitutionAccount.FinancialInstitutionBranchName.Text	1. Not Required ←
2.1.4.3.5.	FinancialInstitutionAccount.FinancialInstitutionName.Text	1. Not Required ←

Formatted: Bullets and Numbering

Formatted: Bullets and Numbering

Formatted: Bullets and Numbering

Formatted: Bullets and Numbering

Formatted: Bullets and Numbering

APPENDIX A – THE MESSAGE CONTENT TABLE EXPLAINED

This section defines the table structure that **must** be used to define the context, structure, and rules of the data elements contained within the XBRL instance document – referred to as the message content table.

There will be a message content table for each context within the message. The grouping of the data elements in accordance to the context aligns to how the data elements are built into the XBRL taxonomy and this consistent presentation will assist Software Developers.

The message content table uses the following rows and columns:

Context Type (row at top of table): This is the name of the XBRL Context Specification or Context Instance which has been defined early in the MIG document.

Sequence Number: This is a sequential number used to indicate the expected order of the data elements within the instance document and to describe the structure of tuples. Data elements within a tuple are allocated a multilevel number to indicate the expected structure and order of the data elements contained within the tuple. If there are nested tuples then the sequence number goes to next numbering level. The following is an extracts from a message content table which illustrates the sequence numbering and multileveling require to cater for tuples and nested tuples.

Seq No.	XBRL Fact
1.	PaymentMechanism (Tuple: zero to many)
1.1.	PaymentMechanism.PaymentMethod.Code
1.2.	PaymentMechanism.Instruction.Text
1.3.	DirectDebit (tuple zero to one)
1.3.1.	Payment Mechanism.Direct DebitAccount.Identifier
1.3.2.	Payment Mechanism.Direct Debit Name.Text
1.4.	DirectCredit (tuple zero to one)
1.4.1.	Payment Mechanism.Direct CreditAccount.Identifier
1.4.2.	Payment Mechanism.Direct CreditName.Text
1.4.3.	FinancialInstitutionAccount (Tuple One Only)
1.4.3.1.	FinancialInstitutionAccount.BankStateBranch.Number
1.4.3.2.	FinancialInstitutionAccount.FinancialInstitutionAccount.Number
1.4.3.3.	FinancialInstitutionAccount.FinancialInstitutionAccountName.Text
1.4.3.4.	FinancialInstitutionAccount.FinancialInstitutionBranchName.Text
1.4.3.5.	FinancialInstitutionAccount.FinancialInstitutionName.Text

Deleted: 2

XBRL Fact: This is the name of the data element to be reported. For example:

Identifiers.AustralianBusinessNumber.Identifier

Instructions / Rules: This column describes all the instructions / rules applicable to the data element. Each rule needs to be given a sequential number which links the rule to its implementation and message code. Rules would include information such as optionality, presentation criteria and the use of XML attributes such as IsVisible.

Rule Implementation: This column informs Software Developers how the rules specified in the Rules column will be provided.

NOTE: This column is only applicable for request messages and the column will not be present in the table for Response Messages.

There can only be the following options:

- **XBRL** – validation provided via the XBRL schemas and linkbases. Typically rules implemented via XBRL do not need to be specified within the MIG. Only those rules that are considered to provide necessary information to software developers should be defined within the MIG. An example of this is the rules associated with the domain values of a dimension within a context specification.
- **Schematron ID** – for rules that cannot be implemented using XBRL some agencies will provide a schematron implementation of the rule. When schematron is provided then the unique ID used to identify the rule within the schematron file must be provided within the MIG. The following is an example of how this should appear in the column: Schematron ID = VICMIG001
- **MIG** - There will be situations where rules will not be provided to Software Developer in a machine readable format and the description of the rule in the MIG is all that will be provided. In this situation the Software Developer has the choice of either implementing the rule as specified within the MIG or they rely on the agency to validate the data element (the expectation is that the Agency will always test for this rule)
- **Agency** – This rule cannot be implemented by the Software Developer and can only be executed by the agency.

SBR Message Code: All messages returned via the SBR channel will contain a code to uniquely identify the condition that has occurred.

NOTE: This column is only applicable for request messages and the column will not be present in the table for Response Messages.

In order to allow codes to be managed in a distributed fashion, codes will take the following format:

{Jurisdiction}.{Agency}.{Function}.{Id}

represented by the regular expression

([A-Z0-9])+.([A-Z0-9])+.([A-Z0-9])+.([A-Z0-9])+

Initially

Jurisdiction = SBR | CMN | QLD | NSW | ACT | VIC | SA | WA | NT | TAS

Agency = Jurisdiction specific agency code

For CMN (Commonwealth), = ATO, ASIC, APRA, ABS

For SBR = GEN (i.e. SBR wide codes)

For States = OSR of Offices of State Revenue

Function = Agency specific functional area or GEN for agency wide codes

For SBR = GEN or FAULT

Id = function specific identifier (format may vary across agencies).

Examples are shown below;

Deleted: 2

SBR.GEN.FAULT.TOOMANYINSTANCES

CMN.ATO.TFN.OK

QLD.OSR.PRL.000001

The above structure recognises and caters for the current situation where agency errors are unharmonised, and will need to be passed through to client software.

The expectation is that for each rule identified within the message content table to have a corresponding message code however depending on the rule implementation a message code may not be relevant in which case Not Applicable (N/A) should be inserted into the rules corresponding message code to make this clear to Software Developers. The follow table summaries what must be provided in the message code column in relation to the rules implementation choice.

Rule Implementation	Message Code
Schematron	Message Code needs to be provided against corresponding rule.
XBRL	Message Code not relevant – place N/A against corresponding rule.
MIG	Message Code needs to be provided against corresponding rule. The only exception is if the rule is associated to rendering instruction to the software developer.
Agency	Message Code needs to be provided against corresponding rule.

The expectation is that each agency will populate a message repository with all error, warning and information message that could be returned via the SBR channel. These message will be allocated an SBR message code using the above mentioned code format. The Software Developer would then use the SBR message code provided via the MIG and the message repository to obtain the full details associated with the message.

Deleted: 2

APPENDIX B – SCREEN SHOTS FROM REVENUE ONLINE

The following screen shots are from WA OSR's online portal Revenue Online and have been provided as a guide that can be used by software developers looking to implement WA OSR Payroll Tax.

The first set of screen shots show the elements required for a monthly lodgement with a Bpay payment reference. While the second set of screen shots show the elements required for an adjustment to a monthly lodgement (wage adjustment).

Periodic Lodgement

Step 1 of 5:

Pay-roll Tax Lodgement	
Client ID - 12345 - ABC PTY LTD Jurisdiction: WA	
Step 1 of 5	
All fields are mandatory (Tab or mouse click through each field). To add wages information click the checkbox.	
Lodgement Period	
Due Date	
<input type="checkbox"/>	
WAGES	
Gross Wages & Salaries	
Contractors / Consultants (if taxable)	
Commissions / Bonuses / Allowances	
Superannuation	
Fringe Benefits (Grossed up Value)	
Directors Remuneration	
Termination Payments	
Specified Taxable Benefits	
Employee Share Acquisition	
Other	
Wages Total	\$0
LESS EXEMPT PAYMENTS	
Apprentices / Trainees	
Workers Compensation	
Defence Forces	
Overseas Employees	
Other	
Exempt Payment Total	\$0
TAXABLE WAGES	
\$0	
IMPORTANT NOTES:	
<ol style="list-style-type: none">1. Penalty Tax may be imposed if pay-roll tax is not paid by the due date or is underpaid.2. Click here to view the Pay-roll Tax information brochures available.3. Click here to view the Objection and Review provisions.4. Click here to advise the Office of State Revenue of a change in your Client Details if you have:<ul style="list-style-type: none">o Changed your nameo Changed an addresso Commenced paying wages or ceased paying wages in another State or Territory of the Commonwealth, oro Become part of a group or ceased to be a member of a group as defined in Part 4 of the Pay-roll Tax Assessment Act 2002	
Cancel Next Print Help	

Pay-roll Tax Lodgement	
Client ID - 12345 - ABC PTY LTD Jurisdiction: WA	
Step 1 of 5	
Lodgement Period	
Due Date	
WAGES	
Gross Wages & Salaries	
Contractors / Consultants	
Commissions / Bonuses	
Superannuation	
Fringe Benefits (Grossed up Value)	
Directors Remuneration	
Termination Payments	
Specified Taxable Benefits	
Other	
Wages Total	
LESS EXEMPT PAYMENTS	
Apprentices / Trainees	
Workers Compensation	
Defence Forces	
Overseas Employees	
Other	
Exempt Payment Total	
TAXABLE WAGES	
IMPORTANT NOTES:	
<ol style="list-style-type: none">1. Penalty Tax may be imposed if pay-roll tax is not paid by the due date or is underpaid.2. Click here to view the Pay-roll Tax information brochures available.3. Click here to view the Objection and Review provisions.4. Click here to advise the Office of State Revenue of a change in your Client Details if you have:<ul style="list-style-type: none">o Changed your nameo Changed an addresso Commenced paying wages or ceased paying wages in another State or Territory of the Commonwealth, oro Become part of a group or ceased to be a member of a group as defined in Part 4 of the Pay-roll Tax Assessment Act 2002	

Deleted:

Step 2 of 5:

Pay-roll Tax Lodgement		
Client ID - 12345 - ABC PTY LTD		
Jurisdiction: WA		
Step 2 of 5		
The lodgement period and taxable wages are displayed below, along with the calculated tax amount for the period. To determine the individual calculations for this period, please press the CALCULATIONS button. To proceed with the lodgement of Pay-roll Tax Return, press the NEXT button.		
Lodgement Period	Taxable Wages	Tax Calculated
August 2009	\$0	\$0.00
Total:	\$0	\$0.00
<div>Cancel Back Next Calculations Help</div>		

Step 3 of 5:


Pay-roll Tax Lodgement	
Client ID - 12345 - ABC PTY LTD	
Jurisdiction: WA	
Step 3 of 5:	
Please select: (Click on relevant option to select)	
<input checked="" type="radio"/> Lodge Return with CIPA Payment	
<input type="radio"/> Lodge Return and obtain BPAY Reference	
<input type="radio"/> Lodge Return only	
<input type="radio"/> Lodge Return and obtain EFT Reference	
Total Tax Calculated:	\$0.00
Less OSR Account Balance:	\$0.00
Amount Payable:	\$0.00
To avoid any penalty tax full payment will be required by the specified due date. Press the NEXT button to continue with lodgement.	
<div>Cancel Back Next Help</div>	

Step 4 of 5:

Pay-roll Tax Lodgement	
Client ID - 12345 - ABC PTY LTD	
Jurisdiction: WA	
Step 4 of 5:	
You have selected to lodge your return and pay by BPAY.	
Please press the FINISH button to lodge this return and pay by BPAY. The BPAY biller code and reference number will be displayed on the next screen.	
Lodgement Period:	August 2009
Amount Payable:	\$0.00
Payment Due Date:	07 SEP 2009
Note: Payment due date does not apply to any overdue debt	
Please press the FINISH button to lodge this return. To exit without lodgement press the CANCEL button.	
<div>Cancel Back Finish Help</div>	

Deleted: 2

Step 5 of 5:

Office of State Revenue - Pay-roll Tax Lodgement	
Client ID - 12345 - ABC PTY LTD Jurisdiction: WA Step 5 of 5:	
ABN - 66 012 878 629	
Lodgement of return with a BPAY payment.	
Your Pay-roll Tax Return for the following period has been lodged with the Office of State Revenue.	
Lodgement Period:	August 2009
Amount Payable:	\$0.00
Payment Due Date:	07 SEP 2009
Please ensure that the full amount is paid by the required due date.	
Note: Payment due date does not apply to any overdue debt	
	Bill Code: 99999 Ref: 1234567 Amount: \$0.00
Telephone & Internet Banking - BPAY Call your bank, credit union or building society to make this payment from your cheque or savings account. More info: www.bpay.com.au	
As you intend to pay by BPAY, please print this screen and retain a copy until you have made the payment.	
<div>Print OK Help</div>	

Deleted: 2

Wage Adjustments

Step 1 of 3:

Pay-roll Tax Wage Adjustment

Client ID - 29865 - WESTPAC BANKING CORPORATION - WA - WA

Step 1 of 3 To modify or view wages information for a specific month, click the button next to the month's wages.

Lodgement Year: 2009/2010

July

August

September

October

November

December

January

February

March

April

May

June

Total YTD

Modify

Modify

View

Reconcile Financial Year

Lodgement Period: Total YTD

WAGES

Gross Wages & Salaries (includes Office of State Revenue Adjustments)

Contractors / Consultants (if taxable)

Commissions / Bonuses / Allowances

Superannuation

Fringe Benefits (Grossed up Value)

Directors Remuneration

Termination Payments

Specified Taxable Benefits

Employee Share Acquisition

Other

Wages Total

LESS EXEMPT PAYMENTS

Apprentices / Trainees

Workers Compensation

Defence Forces

Overseas Employees

Other

Exempt Payment Total

TAXABLE WAGES

IMPORTANT NOTES:

1. Penalty Tax may be imposed if pay-roll tax is not paid by the due date or is underpaid.

2. Click here to view the Pay-roll Tax information brochures available.

3. Click here to view the Objection and Review provisions.

4. Click here to advise the Office of State Revenue of a change in your Client Details if you have:

○ Changed your name

○ Changed an address

○ Commenced paying wages or ceased paying wages in another State or Territory of the Commonwealth, or

○ Become part of a group or ceased to be a member of a group as defined in Part 4 of the Pay-roll Tax Assessment Act 2002

5. If revising wage details already lodged, the adjustment will be treated as an application for reassessment of the liability by the Commissioner. Any tax adjustment will be notified via correspondence.

Cancel

Previous Year

Next

Print

Help

Client ID - <client id> -

Step 1 of 3 To

Lodgement Year: <

July

August

September

October

November

December

January

February

March

April

May

June

Total YTD

Reconcile Financial Year

IMPORTANT NOTES:

1. Penalty Tax may be imposed if pay-roll tax is not paid by the due date or is underpaid.

2. Click here to view the Pay-roll Tax information brochures available.

3. Click here to view the Objection and Review provisions.

4. Click here to advise the Office of State Revenue of a change in your Client Details if you have:

○ Changed your name

○ Changed an address

○ Commenced paying wages or ceased paying wages in another State or Territory of the Commonwealth, or

○ Become part of a group or ceased to be a member of a group as defined in Part 4 of the Pay-roll Tax Assessment Act 2002

5. If revising wage details already lodged, the adjustment will be treated as an application for reassessment of the liability by the Commissioner. Any tax adjustment will be notified via correspondence.

Cancel

Previous Year

Next

Print

Help

Deleted: 2

VERSION 4.0

UNCLASSIFIED
PAGE 51 OF 52

Step 2 of 3:

Pay-roll Tax - Wage Adjustment

Client ID - <client id> - <client name> - <jurisdiction>

Step 2 of 3Summary of Wage Adjustments for Lodgement Year <lodgement year>

	Taxable Wages Before Adjustment	Taxable Wages After Adjustment	Wages Variance	Tax Variance
July	<jul wages>	<jul wages after adj>	<jul wages after adj - jul wages>	<jul tax variance>
August				
September				
October	Not Lodged			
November	Not Lodged			
December	Not Lodged			
January	Not Lodged			
February	Not Lodged			
March	Not Lodged			
April	Not Lodged			
May	Not Lodged			
June	Not Lodged			
Total YTD				

Cancel

Back

Confirm

Print

Help

Step 3 of 3:

Pay-roll Tax - Wage Adjustment

Client ID - <client id> - <client name> - <jurisdiction>

Step 3 of 3Confirmation of Wage Adjustments for Lodgement Year <lodgement year>

	Taxable Wages Before Adjustment	Taxable Wages After Adjustment	Wages Variance	Tax Variance	Transaction ID	Lodged
July	<jul wages>	<jul wages after adj>	<wages after adj - wages>	<jul tax variance>	<lodgement receipt id>	<receipt datetime>

Press the Pay button for optional payment facilities.

Pay

OK

Print

Help

Page 17: [1] Deleted			s2000075	10/06/2010 4:35:00 PM
Example Instance		ptlwa.0001.prefill.request.02.00.sample.instance.xml		
Page 20: [2] Deleted			s2000075	10/06/2010 4:35:00 PM
Example Instance		ptlwa.0001.prefill.response.02.00.sample.instance.xml		
Page 23: [3] Deleted			s2000075	10/06/2010 4:35:00 PM
Example Instance		ptlwa.0001.calculate.request.02.01.sample.instance.xml		
Page 29: [4] Deleted			s2000075	10/06/2010 4:36:00 PM
Example Instance		ptlwa.0001.calculate.response.02.01.sample.instance.xml		
Page 33: [5] Deleted			s2000075	10/06/2010 4:36:00 PM
Example Instance		ptlwa.0001.lodge.request.02.01.sample.instance.xml		