



An Australian Government Initiative
Standard Business Reporting

SBR

Production Release – suitable for use

Standard Business Reporting

WA OSR Payroll Tax Australia Wide Wages Message Implementation Guide

Program name: *Standard Business Reporting*

Date: 25th March 2010

Program Director: Paul Madden

! This document and its attachments are **Unclassified**

➤ For further information or questions, contact the SBR Program Office at SBRServiceDesk@ato.gov.au or call +61 1300 488 231. International callers may use +61 2-6216 5577.

VERSION CONTROL

Version	Release date	Description of changes
1.0	25/3/2010	Production Release – suitable for use

ENDORSEMENT

APPROVAL

Helen Austin

Chief Solutions Architect
Solutions Integration
Standard Business Reporting

Copyright

© Commonwealth of Australia 2010

This work is copyright. Use of the Information and Material is subject to the terms and conditions in the "Standard Business Reporting (SBR) Disclaimer and Conditions of Use" which is available at <http://www.sbr.gov.au>. You must ensure that you comply with those terms and conditions. In particular, those terms and conditions include disclaimers and limitations on the liability of the Commonwealth and the SBR Agencies and an indemnity from you to the Commonwealth and its personnel, the SBR Agencies and their personnel.

You must include this copyright notice in all copies of this Information and Material which you create. If you modify, adapt or prepare derivative works of the Information and Material, the notice must still be included but you must add your own copyright statement to your modification, adaptation or derivative work which makes clear the nature of your modification, adaptation or derivative work and you must include an acknowledgement that the adaptation, modification or derivative work is based on Commonwealth owned Information and Material.

WA OSR Copyright Notice

Subject to the fair dealing provisions of the Copyright Act 1968, all rights reserved.

This material may not be published, broadcast, re-written or re-distributed in whole or part without the permission of the Office of State Revenue, Western Australia.

Table of contents

1	Introduction.....	5
1.1	Purpose.....	5
1.2	Audience and Scope.....	5
1.3	References.....	5
1.4	Change Management	5
2	General Instructions	6
2.1	Authorisation of Intermediaries	6
2.2	Declarations	6
2.3	SBDH Variations	6
2.3.1	Business Documents	6
2.3.2	Attachments	6
2.3.3	Document Identifiers	6
2.3.4	Lodgment date and time interpretation	6
2.4	Response Messages	7
2.4.1	Messages described in the MIG.....	7
2.4.2	Messages not described in the MIG.....	7
2.4.3	Messages not described at all.....	7
2.4.4	Tuples and Context.....	7
2.5	Balance Attribute not to be used.....	7
2.6	Screen shots from Revenue Online	7
3	Business Overview	8
3.1	Australia Wide Wages.....	8
3.2	Prerequisites	9
3.3	Schema Use by Date	9
3.4	Commencement date for services	9
4	XBRL Context Specifications.....	10
4.1	Context Specification – Reporting Party:	10
4.2	Context Specification – Group Status:	11
4.3	Context Specification – Government Agency:	12
5	Australia Wide Wages (AWW) Interaction Model	13
5.1	Service Summary.....	13
5.2	Pre Fill AWW Payroll Tax Specifications	14
5.2.1	Request Pre Fill AWW - Message.....	14
5.2.1.1	Discoverable Taxonomy Set References.....	14
5.2.1.1	Standard Business Document Header Content	15
5.2.1.2	Standard Business Document Body Content.....	15
5.2.2	Response Pre Fill AWW - Message.....	17
5.2.2.1	Discoverable Taxonomy Set References.....	17
5.2.2.2	Standard Business Document Header Content	17
5.2.2.3	Standard Business Document Body Content.....	17
5.3	Calculate AWW Specifications.....	20
5.3.1	Request Calculate AWW - Message.....	20
5.3.1.1	Discoverable Taxonomy Set References.....	20
5.3.1.2	Standard Business Document Header Content	20
5.3.1.3	Standard Business Document Body Content.....	21
5.3.2	Response Calculate AWW Payroll Tax - Message	24
5.3.2.1	Discoverable Taxonomy Set References.....	24
5.3.2.2	Standard Business Document Header Content	24
5.3.2.3	Standard Business Document Body Content.....	24
5.4	Lodge AWW Specifications.....	27
5.4.1	Request Lodge AWW - Message.....	27
5.4.1.1	Discoverable Taxonomy Set References.....	27
5.4.1.2	Standard Business Document Header Content	28
5.4.1.3	Standard Business Document Body Content.....	28

5.4.2	Response Lodge AWW Payroll Tax - Message	31
5.4.2.1	Discoverable Taxonomy Set References	31
5.4.2.2	Standard Business Document Header Content	31
5.4.2.3	Standard Business Document Body Content.....	31
Appendix A – The Message Content Table Explained		34
Appendix B – Screen Shots from Revenue Online.....		37

List of Figures

Figure 1 – WA OSR Australia Wide Wages Business Context.....	8
Figure 2 – Australia Wide Wages Workflow for WA OSR.....	13

Terminology

For definition of the terminology and acronyms used within this document please refer to the glossary on the SBR website – Click http://www.sbr.gov.au/Developers/SBR_Taxonomy/Glossary.aspx to go to the glossary.

The key words “MUST”, “MUST NOT”, “REQUIRED”, “SHALL”, “SHALL NOT”, “SHOULD”, “SHOULD NOT”, “RECOMMENDED”, “MAY”, and “OPTIONAL” in this document are to be interpreted as described in RFC 2119 <http://www.ietf.org/rfc/rfc2119.txt>. The use of the word “Mandatory” is to be read as “MUST”.

1 INTRODUCTION

1.1 PURPOSE

The purpose of this document is to support software developers in the implementation of the SBR Payroll Tax Australia Wide Wages reporting service for the state of Western Australia (along with the Cocos Island and Christmas Island Territories that are administered by WA OSR).

1.2 AUDIENCE AND SCOPE

This document contains the necessary information required to support WA OSR Payroll Tax Australia Wide Wages services.

1.3 REFERENCES

Ref	Document Link	Document description
1)	State and Territory Payroll Tax Message Implementation Guide Overview document can be downloaded http://www.sbr.gov.au/Developers/Downloads/Common_components.aspx	This is the entry document to the individual SRO MIGS. This document provides a holistic view of the SRO payroll tax solutions and highlights where opportunities for consistent solutions have been adopted.
2)	The SBR Web Service Implementation Guide document can be downloaded http://www.sbr.gov.au/Developers/Downloads/Common_components.aspx	Technical interface data that is common to all business processes and messages that use the SBR channel: <ul style="list-style-type: none"> • Web service protocol specifications • Standard message header structure • Standard error codes • Authentication protocol and trust broker
3)	The SBR Taxonomy Architecture document can be downloaded http://www.sbr.gov.au/Developers/Downloads/Common_components.aspx	Reference document that describes the structure of the SBR taxonomy, its naming conventions, release management and change control, and how each business interaction fits within the architecture.
4)	The Software Developer Kit documentation can be accessed http://www.sbr.gov.au/Developers/Software_developers_kit/SDK_Guide.aspx	Reference information for software developers using the SBR software developer kit

1.4 CHANGE MANAGEMENT

If a material change is required to the WA OSR Australia Wide Wages Message Implementation Guide the document will be re-released. The Taxonomy Approval Committee must approve any change.

2 GENERAL INSTRUCTIONS

This section provides instructions that are relevant across all collaborations and messages specified within this MIG.

2.1 AUTHORISATION OF INTERMEDIARIES

WA OSR utilises a delegated authority model for Revenue Online (ROL) and SBR. For each ROL account there is one Administrator and they can add as many General Users as they like. To use SBR each user will be required to obtain an SBR Credential (AUSkey) and link this to their ROL Username in ROL. An Intermediary can be either an Administrator or a General User.

2.2 DECLARATIONS

No explicit Declaration is required. However, all SBR User's are required to be registered WA OSR ROL clients. All ROL clients must accept terms and conditions in relation to their obligations to WAOSR at the point of registration. The requirement to be registered via this system implies that these declarations also cover transactions made via SBR.

2.3 SBDH VARIATIONS

The WIG describes the SBDH content in detail. Described in this section are only variations from what is defined in the WIG.

2.3.1 Business Documents

Only one business document in the SBDB per message will be accepted.

2.3.2 Attachments

No attachments will be accepted or provided.

2.3.3 Document Identifiers

The following document Identifiers are used by WA OSR:

Period.Unique.Identifier - used to link the monthly returns that relate to a quarterly return.

BusinessDocument.GovernmentGeneratedIdentifier.Text - used to uniquely identify the return period.

Lodgment.Receipt.Identifier - provided upon receipt of a lodgement.

2.3.4 Lodgment date and time interpretation

The SBDH contains a lodgement receipt date and time. This is contained in the element Lodgment.Receipt.Datetime, is in xs:dateTime format and will be provided in UTC time (not local). For List and Prelodge interactions WA OSR will not provide a lodgement receipt.

As the xs:dateTime format requires a time, a default 00:00:00 time will be assigned to the lodgement receipt. It should also be noted that conversion of Lodgment.Receipt.Datetime to local time must occur before displaying the date. Failure to perform this conversion could lead to an incorrect date being displayed to the user.

For WA OSR Payroll Tax interactions, a full time and date (in UTC) will be provided.

2.4 RESPONSE MESSAGES

2.4.1 Messages described in the MIG

Where business rules associated with data elements could be reasonably implemented by a Software Developer they have been described in the business content tables below along with an associated response message code. A description of response message coding can be found in Appendix A of this document.

2.4.2 Messages not described in the MIG

Some business rules are implemented within the WA OSR core processing systems but are not practical to be implemented elsewhere as they refer to business data held within the WA OSR. These messages are listed in the SBR Response Message Repository only.

Examples of these messages follow:

Message Event Item	Value
Message.Event.Item.Error.Code	WA.OSR.WS.000001
Message.Event.Item.Severity.Code	Error
Message.Event.Item.Short.Description	Service unavailable. Complete your lodgement in Revenue Online at https://rol.osr.wa.gov.au/rol/
Message.Event.Item.Detailed.Description	The WAOSR database is currently unavailable

2.4.3 Messages not described at all

There may be limited messages produced by WA OSR core processing systems that have not been documented. They will be returned in the format as described above.

2.4.4 Tuples and Context

All facts reported in a tuple must use the same context.

2.5 BALANCE ATTRIBUTE NOT TO BE USED

The balance attribute of each element used in the WA OSR Report is based on the SBR AU Taxonomy and cannot be relied upon to be that of WA OSR.

2.6 SCREEN SHOTS FROM REVENUE ONLINE

Screen shots from WA OSR's online Portal can be found in Appendix B of this document. These have been provided as a guide that can be used by software developers looking to implement WA OSR Payroll Tax.

3 BUSINESS OVERVIEW

The WA OSR (along with the Cocos Island and Christmas Island Territories that are administered by WA OSR) will implement the following business functions via SBR:

- Periodic Return
- Wage Adjustments (Modification of a lodged Periodic Return)
- Australia Wide Wages Return

For information relating to the Periodic and Wage Adjustments returns please refer to the WA OSR Periodic MIG.

3.1 AUSTRALIA WIDE WAGES

The diagram below illustrates all possible interactions between a client and the WA Office of State Revenue for the lodgement of Australia Wide Wages.

The top half of the diagram shows the interactions that are currently available to a Client for the purposes of lodging Australia Wide Wages via the WA OSR Portal Revenue Online (<https://rol.osr.wa.gov.au/rol/>). The interactions that will be available via the SBR platform are shown in the second half of the diagram.

Lodgement of Australia Wide Wages

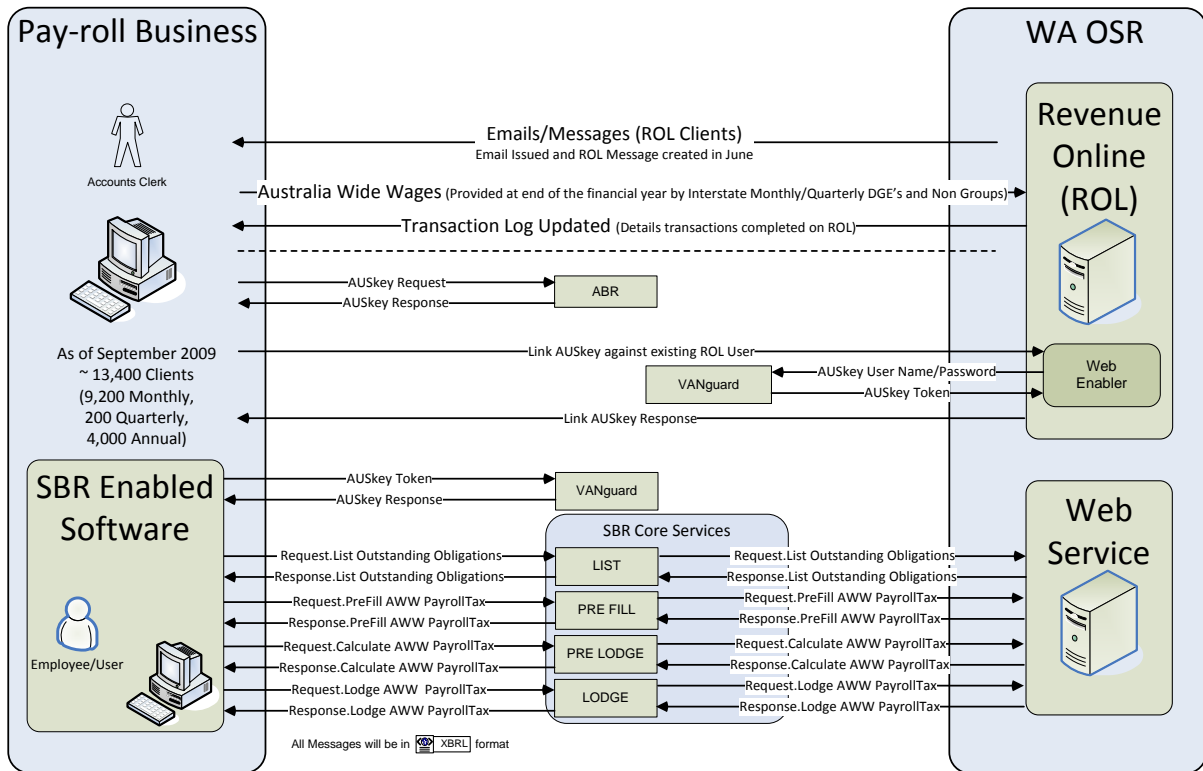


Figure 1 – WA OSR Australia Wide Wages Business Context

3.2 PREREQUISITES

WA OSR requires employers to complete the following:

- Register with WA OSR as a Payroll tax Client specifically via its current online portal (Revenue Online referred to as ROL). This operation creates a business registration within WA OSR's core Revenue Collection Information System (referred to as RCIS) and an online user account for ROL;
- Obtain an SBR credential for authentication;
- Associate this credential with an existing ROL account; and
- To use the direct debit payment facility (referred to as the Customer Initiated Payment System) the client must register their account details with WA OSR, this can be done via ROL.

3.3 SCHEMA USE BY DATE

WA OSR will only support the latest version of the ptarwa.0001 reports.

3.4 COMMENCEMENT DATE FOR SERVICES

Australia Wide Wages:

Details of Australia Wide Wages forms Outstanding will be made available with effect from 1st July 2011 and will provide details of any forms Outstanding for the 2010/11 financial year onwards.

4 XBRL CONTEXT SPECIFICATIONS

The following sections define the context specifications that will be used within this MIG. The context types are allocated to the individual data elements within the message specifications below.

4.1 CONTEXT SPECIFICATION – REPORTING PARTY:

XBRL Instance Context Data Concept	Requirement	Instructions/Rules	Rule Imp	SBR Msg code
Context Identifier	Mandatory	This is a unique identifier used to link the data element to a defined XBRL context. SBR is recommending a four character id starting with "C" and a three digit sequential number for each context e.g. C001 1. Must be a valid value	1. XBRL	1. WA.OSR.WS.000006
Entity Identifier	Mandatory	This field must be set to the ABN that the business document instance relates to. 1. Must be a valid ABN 2. ABN must be registered with receiving agency	1. MIG 2. MIG	1. WA.OSR.DB.100015 2. WA.OSR.DB.100017
Entity Identifier Scheme	Mandatory	1. This field must be set to http://www.abr.gov.au/abn	1. MIG	1. WA.OSR.WS.000008
Entity Segment	Mandatory	1. Explicit member dimension ReportPartyType set to "RprtPyType.02.03:ReportingParty"	1. XBRL	1. WA.OSR.WS.000006
	Mandatory	1. Explicit member dimension AustralianStatesTerritoriesAndOffShoreAreas must be set to one of the following: "h01.02.01:WA", "h01.02.01:CC", "h01.02.01:CI"	1. XBRL	1. WA.OSR.WS.000006
Period Type	Mandatory	The period type must be set to the following start date and end date		
Period Date - Start Date	Mandatory	1. Both the Start and End Date will be provided at the message level.	1. XBRL	1. WA.OSR.WS.000006
Period Date - End Date	Mandatory			

4.2 CONTEXT SPECIFICATION – GROUP STATUS:

XBRL Instance Context Data Concept	Requirement	Instructions/Rules	Rule Imp	SBR Msg code
Context Identifier	Mandatory	This is a unique identifier used to link the data element to a defined XBRL context. SBR is recommending a four character id starting with "C" and a three digit sequential number for each context e.g. C001 1. Must be a valid value	1. XBRL	1. WA.OSR.WS.000006
Entity Identifier	Mandatory	This field must be set to the ABN that the business document instance relates to. 1. Must be a valid ABN 2. ABN must be registered with receiving agency	1. MIG 2. MIG	1. WA.OSR.DB.100015 2. WA.OSR.DB.100017
Entity Identifier Scheme	Mandatory	1. This field must be set to http://www.abr.gov.au/abn	1. MIG	1. WA.OSR.WS.000008
Entity Segment	Mandatory	1. Explicit member dimension ReportPartyType set to "RprtPyType.02.03:ReportingParty"	1. XBRL	1. WA.OSR.WS.000006
	Mandatory	1. Explicit member dimension AustralianStatesTerritoriesAndOffShoreAreas must be set to one of the following: "h01.02.01:WA", "h01.02.01:CC", "h01.02.01:CI"	1. XBRL	1. WA.OSR.WS.000006
	Mandatory	1. Explicit member dimension EmployerGroupStatus must be set to one of the following: "EmpGrpSts.02.04:NGE", "EmpGrpSts.02.04:DGE", "EmpGrpSts.02.04:GE"	1. XBRL	1. WA.OSR.WS.000006
Period Type	Mandatory	The period type must be set to the following start date and end date		
Period Date - Start Date	Mandatory	1. Both the Start and End Date will be provided at the message level.	1. XBRL	1. WA.OSR.WS.000006
Period Date - End Date	Mandatory			

4.3 CONTEXT SPECIFICATION – GOVERNMENT AGENCY:

XBRL Instance Context Data Concept	Requirement	Instructions/Rules	Rule Imp	SBR Msg code
Context Identifier	Mandatory	This is a unique identifier used to link the data element to a defined XBRL context. SBR is recommending a four character id starting with "C" and a three digit sequential number for each context e.g. C001 1. Must be a valid value	1. NA	1. NA
Entity Identifier	Mandatory	1. This field must be set to the ABN of WA OSR	1. NA	1. NA
Entity Identifier Scheme	Mandatory	1. This field must be set to http://www.abr.gov.au/abn	1. NA	1. NA
Entity Segment	Mandatory	1. Explicit member dimension ReportPartyType set to "RprtPyType.02.03:GovernmentAgency"	1. NA	1. NA
Period Type	Mandatory	The period type must be set to the following start date and end date		
Period Date - Start Date	Mandatory	1. Both the Start and End Date will be provided at the message level.	1. NA	1. NA
Period Date - End Date	Mandatory			

5 AUSTRALIA WIDE WAGES (AWW) INTERACTION MODEL

This section describes the sequence of the interactions required to enable the fulfilment of the WA OSR AWW Payroll tax return.

5.1 SERVICE SUMMARY

The workflow defined below represents the abstract process model for the periodic payroll tax return. The following defines the sequence, optionality and repeatability of the service execution. Where a service is identified as 'Mandatory' then the Software Developer has to implement this service as the service needs to be executed by the business in order to complete the transaction. Repeatability indicates if the service can execute the service more than once – 'Yes' meaning that a service can be executed multiple times within the sequence.

The services must be executed in the specified sequence – if a service is executed out of sequence then a number of SBR response codes may be returned. Example scenarios may include those relating to invalid WAOSR Notice identifiers or invalid Client Account balances. Please refer to WA OSR list of available Response Messages for more information.

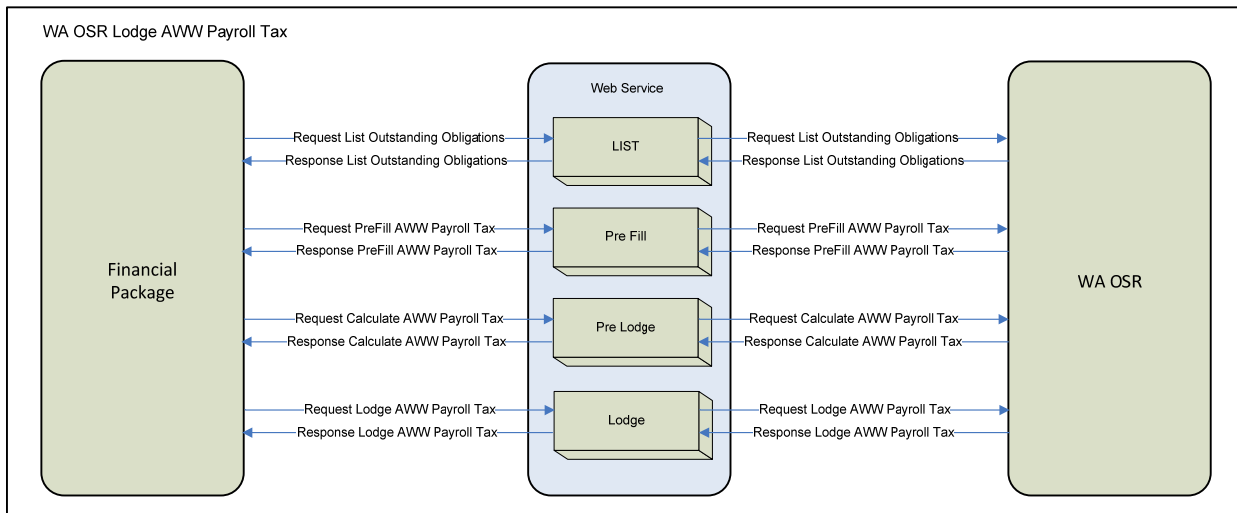


Figure 2 – Australia Wide Wages Workflow for WA OSR

	Service Name	Mandatory	Repeatability
1.	<p>List Outstanding Obligations</p> <p>The purpose of this interaction is to allow business to request a summary listing of their Outstanding Obligations for WA OSR. The list will be based on the ABN provided.</p> <p>Please see <i>WA OSR Payroll Tax Common MIG</i> for message specification.</p>	Yes	Yes
2.	<p>Pre Fill AWW Payroll Tax</p> <p>The purpose of this interaction is to enable the business to pre-populate the relevant revenue data elements from WA OSR.</p>	Yes	Yes
3.	<p>Calculate AWW Payroll Tax</p> <p>The purpose of this interaction is to enable the business to supply the Australia Wide Wages to WA OSR who perform any calculations required.</p>	Yes	Yes

	Service Name	Mandatory	Repeatability
4.	Lodge AWW Payroll Tax The purpose of this interaction is for the business to formally lodge their AWW return. If a user wishes to make an amendment then they must contact WA SRO.	Yes	No

5.2 PRE FILL AWW PAYROLL TAX SPECIFICATIONS

Interaction Name	Pre Fill AWW Payroll Tax
Description	The purpose of this interaction is to enable the business to pre-populate the relevant revenue data elements from WA OSR.
Stakeholders	Business, State Revenue Offices
Pre-conditions	User has executed the List Outstanding Obligations service and selected the obligation they require pre-filled.
Post-conditions	Success – The User will receive the data relevant to the outstanding AWW report. Failure – The User will receive an Error message.
Initiating party	Business
Channel	SBR
Core Service Map	PreFill

5.2.1 Request Pre Fill AWW - Message

5.2.1.1 Discoverable Taxonomy Set References

Schema	ptarwa.0001.prefill.request.02.00.report.xsd
Linkbases	ptarwa.0001.prefill.request.02.00.defLink.xml
	ptarwa.0001.prefill.request.02.00.labLinkInfoCls.xml
	ptarwa.0001.prefill.request.02.00.presLink.xml
	ptarwa.0001.prefill.request.02.00.refLink.xml
Example Instance	ptarwa.0001.prefill.request.02.00.sample.instance.xml

5.2.1.1 Standard Business Document Header Content

The WIG provides the specification of the SBDH. The following table specifies the message specific data element values or any variations to the WIG.

Attribute Name	Optionality	Rules/Values	Rules / Instructions	Msg Response Code
Message Type Text	Mandatory	Value must be "ptarwa.0001.prefill.request"	1. MIG	1. WA.OSR.XSLT.001012

5.2.1.2 Standard Business Document Body Content

The following describes the facts and context required to be supplied within the XBRL instance document populated into the SBDB element BusinessDocument.instance.text

5.2.1.2.1 Request Pre Fill AWW XBRL Context

Context Spec	Hypercube Name	Associated Segment Dimensions	Instructions/Rules	Rule Imp.	SBR Message Code
ReportingParty	ReportingPartyWACCCI	ReportPartyType, AustralianStatesTerritoriesAndOffShoreAreas	1. There must be only one Context within the instance document. 2. The Start Date should be set to the start date relevant to the AWW return - use value supplied via the List Outstanding Obligations Service. 3. The End Date should be set to the end date relevant to the AWW return - use value supplied via the List Outstanding Obligations Service.	1. MIG 2. MIG 3. MIG	1. WA.OSR.XSLT.001045 2. WA.OSR.DB.100028 3. WA.OSR.DB.100030

5.2.1.2.2 Request Pre Fill AWW Message Content Table

The following table contains the facts required in the instance document.

Context – ReportingParty				
Seq No.	XBRL Fact	Rules/Instructions	Rule Imp.	SBR Message Code
1.	Identifiers.StateRevenueOfficeClientNumber.Identifier	1. Mandatory – use value supplied via the List Outstanding Obligations Service 2. This is the Client id as registered with WAOSR	1. MIG 2. Agency	1. WA.OSR.DB.100134 2. WA.OSR.DB.100134
2.	Report.Name.Text	1. Mandatory use value supplied via the List Outstanding Obligations Service	1. MIG	1. WA.OSR.DB.100142
3.	Report.Type.Code	1. Mandatory use value supplied via the List Outstanding Obligations Service	1. MIG	1. WA.OSR.DB.100143
4.	OrganisationNameDetails(Tuple One)			
4.1.	OrganisationNameDetails.OrganisationalNameType.Code	1. Mandatory and must be set to "MTR"	1. MIG	1. WA.OSR.DB.100136
4.2.	OrganisationNameDetails.OrganisationalName.Text	1. Mandatory use value supplied via the List Outstanding Obligations Service 2. This is the organisation name as registered with WAOSR	1. MIG 2. Agency	1. WA.OSR.DB.100135 2. WA.OSR.DB.100050
5.	BusinessDocument.GovernmentGeneratedIdentifier.Text	1. Mandatory use value supplied via the List Outstanding Obligations Service	1. Agency	1. WA.OSR.DB.100023

5.2.2 Response Pre Fill AWW - Message

5.2.2.1 Discoverable Taxonomy Set References

Schema	ptarwa.0001.prefill.response.02.00.report.xsd
Linkbases	ptarwa.0001.prefill.response.02.00.presLink.xml
	ptarwa.0001.prefill.response.02.00.labLinkInfoCls.xml
	ptarwa.0001.prefill.response.02.00.refLink.xml
	ptarwa.0001.prefill.response.02.00.defLink.xml
Example Instance	ptarwa.0001.prefill.response.02.00.sample.instance.xml

5.2.2.2 Standard Business Document Header Content

Attribute Name	Optionality	Rules/Values
Message Type Text	Mandatory	Value will be "ptarwa.0001.prefill.response"

5.2.2.3 Standard Business Document Body Content

The following describes the facts and context required to be supplied within the XBRL instance document populated into the SBDB element BusinessDocument.instance.text

5.2.2.3.1 Response Pre Fill AWW XBRL Context

Context Spec	Hypercube Name	Associated Segment Dimensions	Instructions/Rules
ReportingParty	ReportingPartyWACCCI	ReportPartyType, AustralianStatesTerritoriesAndOffShoreAreas,	<ol style="list-style-type: none"> 1. There will be only one Context within the instance document. 2. The Start Date will be set to the start date relevant to the AWW return. 3. The End Date will be set to the end date relevant to the AWW return.
GroupStatus	ReportingPartyWACCCIE mployerGroupStatus	ReportPartyType, AustralianStatesTerritoriesAndOffShoreAreas, EmployerGroupStatus,	<ol style="list-style-type: none"> 1. The Group Status context can be provided one-to-many times. If the Group Status Context = "NGE" there will only be one context. If the Group Status Context = "DGE" there will be one context, there will also be one context for each group member (Group Status Context = "GE"). The Group Status Context should be used to distinguish a DGE from a Member in the case of the Australia Wide Wages form for Interstate Group employers. 2. The Start Date will be set to the start date relevant to the AWW return. 3. The End Date will be set to the end date relevant to the AWW return.

5.2.2.3.2 Response Pre Fill AWW Message Content Table

The following table contains the facts required in the instance document.

Context – ReportingParty		
Seq No.	XBRL Fact	Rules/Instructions
1	Identifiers.StateRevenueOfficeClientNumber.Identifier	<ol style="list-style-type: none"> 1. Mandatory 2. This is the Client id as registered with WAOSR
2	Identifiers.PayrollTaxGroup.Identifier	<ol style="list-style-type: none"> 1. Conditional. Mandatory when GroupStatus of the ReportingParty = "DGE"
3	Report.Name.Text	<ol style="list-style-type: none"> 1. Mandatory
4	Report.Type.Code	<ol style="list-style-type: none"> 1. Mandatory
5	OrganisationNameDetails(Tuple One)	
5.1	OrganisationNameDetails.OrganisationalNameType.Code	<ol style="list-style-type: none"> 1. Mandatory and must be set to "MTR"
5.2	OrganisationNameDetails.OrganisationalName.Text	<ol style="list-style-type: none"> 1. Mandatory 2. This is the organisation name as registered with WAOSR
6	BusinessDocument.GovernmentGeneratedIdentifier.Text	<ol style="list-style-type: none"> 1. Mandatory

Context – GroupStatus		
Seq No.	XBRL Fact	Rules/Instructions
1	Identifiers.StateRevenueOfficeClientNumber.Identifier	1. Mandatory 2. This is the Client id as registered with WAOSR
2	OrganisationNameDetails(Tuple One)	
2.1	OrganisationNameDetails.OrganisationalNameType.Code	1. Mandatory and must be set to "MTR"
2.2	OrganisationNameDetails.OrganisationalName.Text	1. Mandatory 2. This is the organisation name as registered with WAOSR
3	Remuneration.WagesAndSalariesTaxableStateTotal.Amount	1. Mandatory

5.3 CALCULATE AWW SPECIFICATIONS

Interaction Name	Calculate AWW PayrollTax
Description	The purpose of this interaction is to enable the business to supply the Australia Wide Wages to WA OSR who perform any calculations required.
Stakeholders	Business, State Revenue Offices
Pre-conditions	User has Populated the AWW return with all required information needed to complete the return
Post-conditions	Success – The User will receive the calculation of Australia Wide Wages Including WA. Failure – The User will receive an Error message.
Initiating party	Business
Channel	SBR
Core Service Map	PreLodge

5.3.1 Request Calculate AWW - Message

5.3.1.1 Discoverable Taxonomy Set References

Schema	ptarwa.0001.calculate.request.02.00.report.xsd
Linkbases	ptarwa.0001.calculate.request.02.00.defLink.xml
	ptarwa.0001.calculate.request.02.00.labLinkInfoCls.xml
	ptarwa.0001.calculate.request.02.00.presLink.xml
	ptarwa.0001.calculate.request.02.00.refLink.xml
Example Instance	ptarwa.0001.calculate.request.02.00.sample.instance.xml

5.3.1.2 Standard Business Document Header Content

The WIG provides the specification of the SBDH. The following table specifies the message specific data element values or any variations to the WIG.

Attribute Name	Optionality	Rules/Instructions	Rule Imp	Msg Code
Message Type Text	Mandatory	Value must be "ptarwa.0001.calculate.request"	1. MIG	1. WA.OSR.XSLT.001012

5.3.1.3 Standard Business Document Body Content

The following describes the facts and context required to be supplied within the XBRL instance document populated into the SBDB element BusinessDocument.instance.text

5.3.1.3.1 Request Calculate AWW XBRL Context

Context Spec	Hypercube Name	Associated Segment Dimensions	Instructions/Rules	Rule Imp.	SBR Message Code
ReportingParty	ReportingPartyWACCCI	ReportPartyType, AustralianStatesTerritoriesAndOffShoreAreas	<ol style="list-style-type: none"> 1. There must be only one Context within the instance document. 2. The Start Date must be set to the start date relevant to the AWW return. 3. The End Date must be set to the end date relevant to the AWW return. 	<ol style="list-style-type: none"> 1. MIG 2. MIG 3. MIG 	<ol style="list-style-type: none"> 1. WA.OSR.XSLT.001046 2. WA.OSR.DB.100028 3. WA.OSR.DB.100030
GroupStatus	ReportingPartyWACCCI EmployerGroupStatus	ReportPartyType, AustralianStatesTerritoriesAndOffShoreAreas, EmployerGroupStatus	<ol style="list-style-type: none"> 1. There can be one to many Contexts. If GroupStatus of the Reporting Party = "DGE" then there must also be details of each Group Employer. 2. The Start Date must be set to the start date relevant to the AWW return. 3. The End Date must be set to the end date relevant to the AWW return. 	<ol style="list-style-type: none"> 1. MIG 2. MIG 3. MIG 	<ol style="list-style-type: none"> 1. WA.OSR.DB.100144 2. WA.OSR.DB.100028 or WA.OSR.DB.100027 3. WA.OSR.DB.100030 or WA.OSR.DB.100029

5.3.1.3.2 Request Calculate AWW Message Content Table

The following table contains the facts required in the instance document.

Context - ReportingParty				
Seq No.	XBRL Fact	Rules	Rule Imp.	SBR Message Code
1	Identifiers.StateRevenueOfficeClientNumber.Identifier	1. Mandatory 2. This is the Client id as registered with WAOSR	1. MIG 2. Agency	1. WA.OSR.DB.100134 2. WA.OSR.DB.100134
2	Identifiers.PayrollTaxGroup.Identifier	1. Conditional. Mandatory when GroupStatus of the ReportingParty = "DGE" - use value supplied via the Prefill AWW Service	1. MIG	1. WA.OSR.DB.100006
3	Report.Name.Text	1. Mandatory - use value supplied via the Prefill AWW Service	1. MIG	1. WA.OSR.DB.100142
4	Report.Type.Code	1. Mandatory - use value supplied via the Prefill AWW Service	1. MIG	1. WA.OSR.DB.100143
5	OrganisationNameDetails(Tuple One)			
5.1	OrganisationNameDetails.OrganisationalNameType.Code	1. Mandatory and must be set to "MTR"	1. MIG	1. WA.OSR.DB.100136
5.2	OrganisationNameDetails.OrganisationalName.Text	1. Mandatory - use value supplied via the Prefill AWW Service 2. This is the organisation name as registered with WAOSR	1. MIG 2. Agency	1. WA.OSR.DB.100135 2. WA.OSR.DB.100050
6	BusinessDocument.GovernmentGeneratedIdentifier.Text	1. Mandatory - use value supplied via the Prefill AWW Service	1. Agency	1. WA.OSR.DB.100123

The Group Status context can be provided one-to-many times. If the Group Status Context = “NGE” there will only be one context. If the Group Status Context = “DGE” there will be one context for the DGE, there will also be one context for each group member (Group Status Context = “GE”).

The Group Status Context should be used to distinguish a DGE from a Member in the case of the Australia Wide Wages form for Interstate Group employers.

The Reporting Party (for Interstate Group employers) should be given the opportunity to add more group members that are not supplied in the Prefill service.

Context - GroupStatus				
Seq No.	XBRL Fact	Rules	Rule Imp.	SBR Message Code
1.	EmployerConditions.GroupMember.EmploysInterstateOnly.Indicator	1. Conditional. Set to true when GroupStatus of the ReportingParty = “GE” and client was not supplied via Prefill. (ie Not Registered in WA).	1.MIG	1. WA.OSR.DB.100007
2.	Identifiers.StateRevenueOfficeClientNumber.Identifier	1. Mandatory 2. This is the Client id as registered with WAOSR	1. MIG 2. Agency	1. WA.OSR.DB.100134 2. WA.OSR.DB.100134
3.	OrganisationNameDetails(Tuple One)			
3.1	OrganisationNameDetails.OrganisationalNameType.Code	1. Mandatory and must be set to "MTR"	1.MIG	1. WA.OSR.DB.100136
3.2	OrganisationNameDetails.OrganisationalName.Text	1. Mandatory 2. This is the organisation name as registered with WAOSR	1. MIG 2. Agency	1. WA.OSR.DB.100135 2. WA.OSR.DB.100050
4.	Remuneration.WagesAndSalaries.TaxableStateTotal.Amount	1. Mandatory use value supplied via the Prefill AWW Service	1.MIG	1. WA.OSR.DB.100117 or WA.OSR.DB.100118 or WA.OSR.DB.100119
5.	Remuneration.WagesAndSalaries.TaxableInterstateTotal.Amount	1. Mandatory	1.MIG	1. WA.OSR.DB.100008 or WA.OSR.DB.100009 or WA.OSR.DB.100010

5.3.2 Response Calculate AWW Payroll Tax - Message

5.3.2.1 Discoverable Taxonomy Set References

Schema	ptarwa.0001.calculate.response.02.00.report.xsd
Linkbases	ptarwa.0001.calculate.response.02.00.presLink.xml
	ptarwa.0001.calculate.response.02.00.labLinkInfoCls.xml
	ptarwa.0001.calculate.response.02.00.refLink.xml
	ptarwa.0001.calculate.response.02.00.defLink.xml
Example Instance	ptarwa.0001.calculate.response.02.00.sample.instance.xml

5.3.2.2 Standard Business Document Header Content

Attribute Name	Optionality	Rules/Instructions
Message Type Text	Mandatory	Value will be "ptarwa.0001.calculate.response"

5.3.2.3 Standard Business Document Body Content

The following describes the facts and context required to be supplied within the XBRL instance document populated into the SBDB element BusinessDocument.instance.text

5.3.2.3.1 Response Calculate AWW XBRL Context

Context Spec	Hypercube Name	Associated Segment Dimensions	Instructions/Rules
ReportingParty	ReportingPartyWACCCI	ReportPartyType, AustralianStatesTerritoriesAndOffShoreAreas	1. There will be only one Context within the instance document. 2. The Start Date will be set to the start date relevant to the AWW return. 3. The End Date will be set to the end date relevant to the AWW return.
GroupStatus	ReportingPartyWACCCIEmployerGroupStatus	ReportPartyType, AustralianStatesTerritoriesAndOffShoreAreas, EmployerGroupStatus	1. There can be one to many Contexts. If GroupStatus of the Reporting Party = "DGE" then there must also be details of each Group Employer. 2. The Start Date will be set to the start date relevant to the AWW return. 3. The End Date will be set to the end date relevant to the AWW return.

5.3.2.3.2 Response Calculate AWW Message Content Table

The following table contains the facts required in the instance document.

Context - ReportingParty		
Seq No.	XBRL Fact	Rules/Instructions
1.	Identifiers.StateRevenueOfficeClientNumber.Identifier	1. Mandatory
2.	Identifiers.PayrollTaxGroup.Identifier	1. Conditional. Mandatory when GroupStatus of the ReportingParty = "DGE"
3.	Report.Name.Text	1. Mandatory
4.	Report.Type.Code	1. Mandatory
5.	OrganisationNameDetails(Tuple One)	
5.1.	OrganisationNameDetails.OrganisationalNameType.Code	1. Mandatory
5.2.	OrganisationNameDetails.OrganisationalName.Text	1. Mandatory
6.	BusinessDocument.GovernmentGeneratedIdentifier.Text	1. Mandatory
7.	Remuneration.WagesAndSalaries.TaxableStateAllGroupMembersTotal.Amount	1. Conditional. Mandatory if the GroupStatus of the ReportingParty = "DGE"
8.	Remuneration.WagesAndSalaries.TaxableInterstateAllGroupMembersTotal.Amount	1. Conditional. Mandatory if the GroupStatus of the ReportingParty = "DGE"
9.	Remuneration.WagesAndSalaries.TaxableGroupStateAndInterstateTotal.Amount	1. Conditional. Mandatory if the GroupStatus of the ReportingParty = "DGE"

The Group Status context can be provided one-to-many times. If the Group Status Context = "NGE" there will only be one context. If the Group Status Context = "DGE" there will be one context for the DGE, there will also be one context for each group member (Group Status Context = "GE").

The Group Status Context should be used to distinguish a DGE from a Member in the case of the Australia Wide Wages form for Interstate Group employers.

Context - GroupStatus		
Seq No.	XBRL Fact	Rules / Instructions
1.	EmployerConditions.GroupMember.EmploysInterstateOnly.Indicator	1. Conditional. This will be true when GroupStatus = "GE" and client was not supplied via Prefill. (ie Not Registered in WA).
2.	Identifiers.StateRevenueOfficeClientNumber.Identifier	1. Mandatory 2. This is the Client id as registered with WAOSR
3.	OrganisationNameDetails(Tuple One)	
3.1	OrganisationNameDetails.OrganisationalNameType.Code	1. Mandatory and must be set to "MTR"
3.2	OrganisationNameDetails.OrganisationalName.Text	1. Mandatory 2. This is the organisation name as registered with WAOSR
4.	Remuneration.WagesAndSalaries.TaxableStateTotal.Amount	1. Mandatory use value supplied via the Prefill AWW Service
5.	Remuneration.WagesAndSalaries.TaxableInterstateTotal.Amount	1. Mandatory
6.	Remuneration.WagesAndSalaries.TaxableStateAndInterstateTotal.Amount	1. Mandatory

5.4 LODGE AWW SPECIFICATIONS

Interaction Name	Lodge AWW PayrollTax
Description	The purpose of this interaction is for the business to formally lodge their AWW return. If a user wishes to make an amendment then they must contact WA SRO.
Stakeholders	Business, State Revenue Offices
Pre-conditions	Business must be registered with WA OSR and have completed a calculation of their Australia Wide Wages including WA Wages using the calculate service.
Post-conditions	Success – The User has successfully lodged their return and will be sent a transaction identifier and a message indicating that their report has been received and will be processed by WA OSR. Failure – The User will receive an Error message.
Initiating party	Business
Channel	SBR
Core Service Map	Lodge

5.4.1 Request Lodge AWW - Message

5.4.1.1 Discoverable Taxonomy Set References

Schema	ptarwa.0001.lodge.request.02.00.report.xsd
Linkbases	ptarwa.0001.lodge.request.02.00.defLink.xml
	ptarwa.0001.lodge.request.02.00.labLinkInfoCls.xml
	ptarwa.0001.lodge.request.02.00.presLink.xml
	ptarwa.0001.lodge.request.02.00.refLink.xml
Example Instance	ptarwa.0001.lodge.request.02.00.sample.instance.xml

5.4.1.2 Standard Business Document Header Content

The WIG provides the specification of the SBDH. The following table specifies the message specific data element values or any variations to the WIG.

Attribute Name	Optionality	Rules/Instructions	Rule Imp	Msg Code
Message Type Text	Mandatory	Value must be "ptarwa.0001.lodge.request"	1. MIG	1. WA.OSR.XSLT.001012

5.4.1.3 Standard Business Document Body Content

The following describes the facts and context required to be supplied within the XBRL instance document populated into the SBDB element BusinessDocument.instance.text

5.4.1.3.1 Request Lodge AWW XBRL Context

Context Spec	Hypercube Name	Associated Segment Dimensions	Instructions/Rules	Rule Imp.	SBR Message Code
ReportingParty	ReportingPartyWACCCI	ReportPartyType, AustralianStatesTerritoriesAndOffShoreAreas	<ol style="list-style-type: none"> 1. There must be only one Context within the instance document. 2. The Start Date must be set to the start date relevant to the AWW return. 3. The End Date must be set to the end date relevant to the AWW return. 	<ol style="list-style-type: none"> 1. MIG 2. MIG 3. MIG 	<ol style="list-style-type: none"> 1. WA.OSR.XSLT.001047 2. WA.OSR.DB.100028 3. WA.OSR.DB.100030
GroupStatus	ReportingPartyWACCCIEmployerGroupStatus	ReportPartyType, AustralianStatesTerritoriesAndOffShoreAreas, EmployerGroupStatus	<ol style="list-style-type: none"> 1. There can be one to many Contexts.If GroupStatus of the Reporting Party = "DGE" then there must also be details of each Group Employer. 2. The Start Date must be set to the start date relevant to the AWW return. 3. The End Date must be set to the end date relevant to the AWW return. 	<ol style="list-style-type: none"> 1. MIG 2. MIG 3. MIG 	<ol style="list-style-type: none"> 1. WA.OSR.XSLT.001044 2. WA.OSR.DB.100028 or WA.OSR.DB.100027 3. WA.OSR.DB.100030 or WA.OSR.DB.100029

5.4.1.3.2 Request Lodge AWW Message Content Table

The following table contains the facts required in the instance document.

Context - ReportingParty				
Seq No.	XBRL Fact	Rules	Rule Imp.	SBR Message Code
1.	Identifiers.StateRevenueOfficeClientNumber.Identifier	1. Mandatory 2. This is the Client id as registered with WAOSR	1. MIG 2. Agency	1. WA.OSR.DB.100134 2. WA.OSR.DB.100134
2.	Identifiers.PayrollTaxGroup.Identifier	1. Conditional. Mandatory when GroupStatus of the ReportingParty = "DGE" - use value supplied via the Prefill AWW Service	1. MIG	1. WA.OSR.DB.100006
3.	Report.Name.Text	1. Mandatory	1. MIG	1. WA.OSR.DB.100142
4.	Report.Type.Code	1. Mandatory	1. MIG	1. WA.OSR.DB.100143
5.	OrganisationNameDetails(Tuple One)			
5.1.	OrganisationNameDetails.OrganisationalNameType.Code	1. Mandatory and must be set to "MTR"	1. MIG	1. WA.OSR.DB.100136
5.2.	OrganisationNameDetails.OrganisationalName.Text	1. Mandatory 2. This is the organisation name as registered with WAOSR	1. MIG 2. Agency	1. WA.OSR.DB.100135 2. WA.OSR.DB.100050
6.	BusinessDocument.GovernmentGeneratedIdentifier.Text	1. Mandatory use value supplied via the Prefill AWW Service	1. Agency	1. WA.OSR.DB.100023
7.	Remuneration.WagesAndSalaries.TaxableStateAllGroupMembersTotal.Amount	1. Conditional. Mandatory if the GroupStatus of the ReportingParty = "DGE". Value as supplied via Calculate AWW Response.	1. MIG	1. WA.OSR.DB.100011
8.	Remuneration.WagesAndSalaries.TaxableInterstateAllGroupMembersTotal.Amount	1. Conditional. Mandatory if the GroupStatus of the ReportingParty = "DGE". Value as supplied via Calculate AWW Response.	1. MIG	1. WA.OSR.DB.100052
9.	Remuneration.WagesAndSalaries.TaxableGroupStateAndInterstateTotal.Amount	1. Conditional. Mandatory if the GroupStatus of the ReportingParty = "DGE". Value as supplied via Calculate AWW Response.	1. MIG	1. WA.OSR.DB.100053
10.	Report.Comments.DataSupplied.Text	1. Conditional. Mandatory if the GroupStatus of the ReportingParty = "DGE".	1. MIG	1. WA.OSR.DB.100054

The Group Status context can be provided one-to-many times. If the Group Status Context = “NGE” there will only be one context. If the Group Status Context = “DGE” there will be one context, there will also be one context for each group member (Group Status Context = “GE”).

The Group Status Context should be used to distinguish a DGE from a Member in the case of the Australia Wide Wages form for Interstate Group employers.

Context - GroupStatus		
Seq No.	XBRL Fact	Rules / Instructions
1.	EmployerConditions.GroupMember.EmploysInterstateOnly.Indicator	1. Conditional. Set to true when GroupStatus = “GE” and client was not supplied via Prefill. (ie Not Registered in WA).
2.	Identifiers.StateRevenueOfficeClientNumber.Identifier	1. Mandatory 2. This is the Client id as registered with WAOSR
3.	OrganisationNameDetails(Tuple One)	
3.1	OrganisationNameDetails.OrganisationalNameType.Code	1. Mandatory and must be set to "MTR"
3.2	OrganisationNameDetails.OrganisationalName.Text	1. Mandatory 2. This is the organisation name as registered with WAOSR
4.	Remuneration.WagesAndSalaries.TaxableStateTotal.Amount	1. Conditional. Mandatory if the GroupStatus of the ReportingParty = “NGE”. Value as supplied via Calculate AWW Response.
5.	Remuneration.WagesAndSalaries.TaxableInterstateTotal.Amount	1. Conditional. Mandatory if the GroupStatus of the ReportingParty = “NGE”. Value as supplied via Calculate AWW Response.
6.	Remuneration.WagesAndSalaries.TaxableStateAndInterstateTotal.Amount	1. Conditional. Mandatory if the GroupStatus of the ReportingParty = “NGE”. Value as supplied via Calculate AWW Response.

5.4.2 Response Lodge AWW Payroll Tax - Message

5.4.2.1 Discoverable Taxonomy Set References

Schema	ptarwa.0001.lodge.response.02.00.report.xsd
Linkbases	ptarwa.0001.lodge.response.02.00.defLink.xml
	ptarwa.0001.lodge.response.02.00.labLinkInfoCls.xml
	ptarwa.0001.lodge.response.02.00.presLink.xml
	ptarwa.0001.lodge.response.02.00.refLink.xml
Example Instance	ptarwa.0001.lodge.response.02.00.sample.instance.xml

5.4.2.2 Standard Business Document Header Content

Attribute Name	Optionality	Rules/Values
Message Type Text	Mandatory	Value must be "ptarwa.0001.lodge.response "
Lodgment.Receipt.Identifier	Mandatory	
Lodgement.Receipt.Datetime	Mandatory	A full time and date (in UTC) will be provided in the following format: YYYY-MM-DDTHH:MM:SS

5.4.2.3 Standard Business Document Body Content

The following describes the facts and context required to be supplied within the XBRL instance document populated into the SBDB element BusinessDocument.instance.text

5.4.2.3.1 Response Lodge AWW XBRL Context

Context Spec	Hypercube Name	Associated Segment Dimensions	Instructions/Rules
ReportingParty	ReportingPartyWACCCI	ReportPartyType, AustralianStatesTerritoriesAndOffShoreAreas	1. There will be only one Context within the instance document. 2. The Start Date will be set to the start date relevant to the earliest AWW return. 3. The End Date will be set to the end date relevant to the latest AWW return.
GovernmentAgency	GovernmentAgency	ReportPartyType	1. There will be only one Context within the instance document. 2. The Start Date will be set to the start date relevant to the earliest AWW return. 3. The End Date will be set to the end date relevant to the latest AWW return.

5.4.2.3.2 Response Lodge AWW Message Content Table

The following table contains the facts required in the instance document.

Important Notes:

The WA Department of Treasury and Finance ABN will be provided in the GovernmentAgency context and is to be displayed with the element OrganisationNameDetails.OrganisationalName.Text (Context Spec GovernmentAgency) at the top of the confirmation screen.

Context - ReportingParty		
Seq No.	XBRL Fact	Rules/Instructions
1.	Identifiers.StateRevenueOfficeClientNumber.Identifier	1. Mandatory
2.	Identifiers.Payroll Tax Group.Identifier	1. Conditional. Mandatory if the GroupStatus of the ReportingParty = "DGE"
3.	Report.Name.Text	1. Mandatory
4.	Report.Type.Code	1. Mandatory
5.	OrganisationNameDetails(Tuple One)	
5.1.	OrganisationNameDetails.OrganisationalNameType.Code	1. Mandatory
5.2.	OrganisationNameDetails.OrganisationalName.Text	1. Mandatory
6.	BusinessDocument.GovernmentGeneratedIdentifier.Text	1. Mandatory
7.	Lodgment.Receipt.Identifier	1. Mandatory
8.	Remuneration.WagesAndSalaries.TaxableStateTotal.Amount	1. Conditional. Mandatory if the GroupStatus of the ReportingParty = "NGE"
9.	Remuneration.WagesAndSalaries.TaxableInterstateTotal.Amount	1. Conditional. Mandatory if the GroupStatus of the ReportingParty = "NGE"
10.	Remuneration.WagesAndSalaries.TaxableStateAndInterstateTotal.Amount	1. Conditional. Mandatory if the GroupStatus of the ReportingParty = "NGE"
11.	Remuneration.WagesAndSalaries.TaxableStateAllGroupMembersTotal.Amount	1. Conditional. Mandatory if the GroupStatus of the ReportingParty = "DGE"

Context - ReportingParty		
Seq No.	XBRL Fact	Rules/Instructions
12.	Remuneration.WagesAndSalaries.TaxableInterstateAllGroupMembersTotal.Amount	1. Conditional. Mandatory if the GroupStatus of the ReportingParty = "DGE"
13.	Remuneration.WagesAndSalaries.TaxableGroupStateAndInterstateTotal.Amount	1. Conditional. Mandatory if the GroupStatus of the ReportingParty = "DGE"

Context - GovernmentAgency		
Seq No.	XBRL Fact	Rules / Instructions
1.	OrganisationNameDetails(Tuple One)	
1.1.	OrganisationNameDetails.OrganisationalNameType.Code	1.Mandatory
1.2.	OrganisationNameDetails.OrganisationalName.Text	1.Mandatory

APPENDIX A – THE MESSAGE CONTENT TABLE EXPLAINED

This section defines the table structure that **must** be used to define the context, structure, and rules of the data elements contained within the XBRL instance document – referred to as the message content table.

There will be a message content table for each context within the message. The grouping of the data elements in accordance to the context aligns to how the data elements are built into the XBRL taxonomy and this consistent presentation will assist Software Developers.

The message content table uses the following rows and columns:

Context Type (row at top of table): This is the name of the XBRL Context Specification or Context Instance which has been defined early in the MIG document.

Sequence Number: This is a sequential number used to indicate the expected order of the data elements within the instance document and to describe the structure of tuples. Data elements within a tuple are allocated a multilevel number to indicate the expected structure and order of the data elements contained within the tuple. If there are nested tuples then the sequence number goes to next numbering level. The following is an extracts from a message content table which illustrates the sequence numbering and multileveling require to cater for tuples and nested tuples.

Seq No.	XBRL Fact
1.	PaymentMechanism (Tuple: zero to many)
1.1.	PaymentMechanism.PaymentMethod.Code
1.2.	PaymentMechanism.Instruction.Text
1.3.	DirectDebit (tuple zero to one)
1.3.1.	Payment Mechanism.Direct DebitAccount.Identifier
1.3.2.	Payment Mechanism.Direct Debit Name.Text
1.4.	DirectCredit (tuple zero to one)
1.4.1.	Payment Mechanism.Direct CreditAccount.Identifier
1.4.2.	Payment Mechanism.Direct CreditName.Text
1.4.3.	FinancialInstitutionAccount (Tuple One Only)
1.4.3.1.	FinancialInstitutionAccount.BankStateBranch.Number
1.4.3.2.	FinancialInstitutionAccount.FinancialInstitutionAccount.Number
1.4.3.3.	FinancialInstitutionAccount.FinancialInstitutionAccountName.Text
1.4.3.4.	FinancialInstitutionAccount.FinancialInstitutionBranchName.Text
1.4.3.5.	FinancialInstitutionAccount.FinancialInstitutionName.Text

XBRL Fact: This is the name of the data element to be reported. For example:

Identifiers.AustralianBusinessNumber.Identifier

Instructions / Rules: This column describes all the instructions / rules applicable to the data element. Each rule needs to be given a sequential number which links the rule to its implementation and message code. Rules would include information such as optionality, presentation criteria and the use of XML attributes such as `IsVisible`.

Rule Implementation: This column informs Software Developers how the rules specified in the Rules column will be provided.

NOTE: This column is only applicable for request messages and the column will not be present in the table for Response Messages.

There can only be the following options:

- XBRL – validation provided via the XBRL schemas and linkbases. Typically rules implemented via XBRL do not need to be specified within the MIG. Only those rules that are considered to provide necessary information to software developers should be defined within the MIG. An example of this is the rules associated with the domain values of a dimension within a context specification.
- Schematron ID – for rules that cannot be implemented using XBRL some agencies will provide a schematron implementation of the rule. When schematron is provided then the unique ID used to identify the rule within the schematron file must be provided within the MIG. The following is an example of how this should appear in the column: Schematron ID = VICMIG001
- MIG - There will be situations where rules will not be provided to Software Developer in a machine readable format and the description of the rule in the MIG is all that will be provided. In this situation the Software Developer has the choice of either implementing the rule as specified within the MIG or they rely on the agency to validate the data element (the expectation is that the Agency will always test for this rule)
- Agency – This rule cannot be implemented by the Software Developer and can only be executed by the agency.

SBR Message Code: All messages returned via the SBR channel will contain a code to uniquely identify the condition that has occurred.

NOTE: This column is only applicable for request messages and the column will not be present in the table for Response Messages.

In order to allow codes to be managed in a distributed fashion, codes will take the following format:

{Jurisdiction}.{Agency}.{Function}.{Id}

represented by the regular expression

([A-Z0-9])+.([A-Z0-9])+.([A-Z0-9])+.([A-Z0-9])+

Initially

Jurisdiction = SBR | CMN | QLD | NSW | ACT | VIC | SA | WA | NT | TAS

Agency = Jurisdiction specific agency code

For CMN (Commonwealth), = ATO, ASIC, APRA, ABS

For SBR = GEN (i.e. SBR wide codes)

For States = OSR of Offices of State Revenue

Function = Agency specific functional area or GEN for agency wide codes

For SBR = GEN or FAULT

Id = function specific identifier (format may vary across agencies).

Examples are shown below;

SBR.GEN.FAULT.TOOMANYINSTANCES

CMN.ATO.TFN.OK

QLD.OSR.PRL.000001

The above structure recognises and caters for the current situation where agency errors are unharmonised, and will need to be passed through to client software.

The expectation is that for each rule identified within the message content table to have a corresponding message code however depending on the rule implementation a message code may not be relevant in which case Not Applicable (N/A) should be inserted into the rules corresponding message code to make this clear to Software Developers. The follow table summaries what must be provided in the message code column in relation to the rules implementation choice.

Rule Implementation	Message Code
Schematron	Message Code needs to be provided against corresponding rule.
XBRL	Message Code not relevant – place N/A against corresponding rule.
MIG	Message Code needs to be provided against corresponding rule. The only exception is if the rule is associated to rendering instruction to the software developer.
Agency	Message Code needs to be provided against corresponding rule.

The expectation is that each agency will populate a message repository with all error, warning and information message that could be returned via the SBR channel. These message will be allocated an SBR message code using the above mentioned code format. The Software Developer would then use the SBR message code provided via the MIG and the message repository to obtain the full details associated with the message.

APPENDIX B – SCREEN SHOTS FROM REVENUE ONLINE

The following screen shots are from WA OSR's online portal Revenue Online and have been provided as a guide that can be used by software developers looking to implement WA OSR Payroll Tax. The screen shots below show the elements required for the lodgement of Australia Wide Wages for an Interstate Non Group or a Designated Group Employer of an Interstate Group.

Australia Wide Wages - Interstate Non Group

Step 1 of 3:

Pay-roll Tax Lodgement

Client ID - <client id> - <client name>
Jurisdiction: <jurisdiction>

Step 1 of 3 Please enter the total Australia Wide Wages, excluding Western Australia, paid during the lodgement period, then select NEXT. These details will be confirmed on the next screen. Western Australian wages declared for the lodgement period are displayed for information only and may not be modified. If these details are incorrect, please use the Modify/View Returns facility to make any adjustments prior to lodging your Australia Wide Wages.

Lodgement Period	WA Wages Declared	Australia Wide Wages (Excl. WA)
<lodgement period>	<wa wages>	

Cancel Next Help

Step 2 of 3:

Pay-roll Tax Lodgement

Client ID - <client id> - <client name>
Jurisdiction: <jurisdiction>

Step 2 of 3 You have selected to lodge your return.

Please press the FINISH button to lodge this return.

Lodgement Period:	<lodgement period>
WA Wages:	<wa wages>
Australia Wide Wages (Excl. WA):	<aw wages (excluding wa)>
Australia Wide Wages (Incl. WA):	<aw wages (including wa)>

To exit without lodgement press the CANCEL button.

Cancel Back Finish Help

Step 3 of 3:

Office of State Revenue - Pay-roll Tax Lodgement

ABN: 66 012 878 629

Client ID - <client id> - <client name>
 Jurisdiction: <jurisdiction>

Step 3 of 3: Lodgement of return

Your Pay-roll Tax Return for the following period has been successfully lodged with the Office of State Revenue.

Lodgement Period:	<lodgement period>
WA Wages:	<wa wages>
Australia Wide Wages (Excl. WA):	<aw wages (excluding wa)>
Australia Wide Wages (Incl. WA):	<aw wages (including wa)>
Confirmation ID:	<transaction id>

Print
OK
Help

Australia Wide Wages - Interstate Group

Step 1 of 3:

Pay-roll Tax Lodgement

Client ID - <client id> - <client name>
 Jurisdiction: <jurisdiction>

Step 1 of 3

Please enter the Australia Wide Wages, excluding Western Australia, paid by each group member during the lodgement period. You are required to supply the wage details of ALL group members including members who pay wages only in other States/Territories. Details of the group structure are populated below. If one or more group members no longer forms part of the group, the member should notify OSR of the change to their status. If a member of the group is not listed below, please select the Unreg. Member checkbox and enter the relevant details.

	Lodgement Period	<lodgement period> (ie DD-MMM-YYYY -> DD-MMM-YYYY)		
	Group ID	<group id>		

	Unreg. Member	Client ID	Client Name	WA Wages	Australia Wide Wages (Excl. WA)
DGE	<input type="checkbox"/>	<dge client id>	<dge client name>	<dge wa wages>	
MEMBER	<input type="checkbox"/>	<member client id 1>	<member client name 1>	<member 1 wa wages>	
MEMBER	<input type="checkbox"/>	<member client id 2>	<member client name 2>	<member 2 wa wages>	
MEMBER	<input type="checkbox"/>				
MEMBER	<input type="checkbox"/>				
MEMBER	<input type="checkbox"/>				
MEMBER	<input type="checkbox"/>				

▶ Enter more Group member wage details

Additional Comments						
	Total	<table style="width: 100%; border: none;"> <tr> <td style="width: 50%;">WA Wages</td> <td style="width: 50%;">Australia Wide Wages (Excl. WA)</td> </tr> <tr> <td><total wa wages></td> <td><total aw excl wa wages></td> </tr> </table>	WA Wages	Australia Wide Wages (Excl. WA)	<total wa wages>	<total aw excl wa wages>
WA Wages	Australia Wide Wages (Excl. WA)					
<total wa wages>	<total aw excl wa wages>					

Total Australia Wide (Incl. WA)

<total aw incl wa wages>

Cancel
Next
Help

Step 2 of 3:

Pay-roll Tax Lodgement				
Client ID - <client id> - <client name>				
Jurisdiction: <jurisdiction>				
Step 2 of 3 You have selected to lodge your return. Please press the FINISH button to lodge this return.				
Lodgement Period		01-07-2007 -> 30-06-2008		
Group ID		4785		
Client ID	Client Name	WA Wages	Australia Wide(Excl. WA)	Australia Wide(Incl. WA)
<dge client id>	<dge client name>	<dge wa wages>	<dge aw wages excl wa>	<dge aw wages incl wa>
<member 1 client id>	<member 1 client name>	<member 1 wa wages>	<m1 aw wages excl wa>	<m1 aw wages incl wa>
<member 2 client id>	<member 2 client name>	<member 2 wa wages>	<m2 aw wages excl wa>	<m2 aw wages incl wa>
Total(Group)		<total wa wages>	<tot aw wages excl wa>	<tot aw wages incl wa>
To exit without lodgement press the CANCEL button.				
<input type="button" value="Cancel"/> <input type="button" value="Back"/> <input type="button" value="Finish"/> <input type="button" value="Help"/>				

Step 3 of 3:

Office of State Revenue - Pay-roll Tax Lodgement	
ABN: 66 012 878 629	
Client ID - <client id> - <client name>	
Jurisdiction: <jurisdiction>	
Step 3 of 3 Lodgement of return	
Your Pay-roll Tax Return for the following period has been successfully lodged with the Office of State Revenue.	
Lodgement Period:	<lodgement period>
Group ID:	<group id>
Total WA Wages (Group):	<total wa wages group>
Total Australia Wide Wages (Excl. WA) (Group):	<total aw wages group excl wa>
Total Australia Wide Wages (Incl. WA) (Group):	<total aw wages group incl wa>
Confirmation ID:	<transaction id>
<input type="button" value="Print"/> <input type="button" value="OK"/> <input type="button" value="Help"/>	