



Production Release – suitable for use

Standard Business Reporting

RevenueSA Payroll Tax Monthly Return Message Implementation Guide

Program name: *Standard Business Reporting*

Date: 27 May 2010

Program Director: Paul Madden

Deleted: 20

! This document and its attachments are **Unclassified**



For further information or questions, contact the SBR Service Desk at SBRServiceDesk@ato.gov.au or call +61 1300 488 231. International callers may use +61-2-6216 5577

VERSION CONTROL

Version	Release date	Description of changes
1.0	27/10/2009	Initial Release
2.0	16/11/2009	RevenueSA Endorsed Version
2.1	16/12/2009	Production Release – suitable for use
3.1	22/04/2010	Changes made to correct several defects, provide consistency with the Annual Reconciliation MIG and other minor changes
4.0	27/05/2010	Added Trainee/Apprentice wages element

Formatted: English (Australia)

Formatted: English (Australia)

Formatted: English (Australia)

Formatted: English (Australia)

Formatted: English (Australia)

Deleted: 20

ENDORSEMENT

APPROVAL

Helen Austin

Chief Solutions Architect
Solutions Integration
Standard Business Reporting

Copyright

© Commonwealth of Australia 2010

This work is copyright. Use of the Information and Material is subject to the terms and conditions in the "Standard Business Reporting (SBR) Disclaimer and Conditions of Use" which is available at <http://www.sbr.gov.au>. You must ensure that you comply with those terms and conditions. In particular, those terms and conditions include disclaimers and limitations on the liability of the Commonwealth and the SBR Agencies and an indemnity from you to the Commonwealth and its personnel, the SBR Agencies and their personnel.

You must include this copyright notice in all copies of this Information and Material which you create. If you modify, adapt or prepare derivative works of the Information and Material, the notice must still be included but you must add your own copyright statement to your modification, adaptation or derivative work which makes clear the nature of your modification, adaptation or derivative work and you must include an acknowledgement that the adaptation, modification or derivative work is based on Commonwealth owned Information and Material.

RevenueSA Copyright Notice

Subject to the fair dealing provisions of the [Copyright Act 1968](#), all rights reserved.

This material may not be published, broadcast, re-written or re-distributed in whole or part without the permission of RevenueSA.

Table of contents

1	Introduction.....	5
1.1	Purpose.....	5
1.2	Audience and Scope	5
1.3	References.....	5
1.4	Change Management.....	5
2	General Instructions.....	6
2.1	Payroll Tax Overview.....	6
2.1.1	SBR Registered Payroll Tax Reporting Parties	6
2.1.2	RevenueSA Online Tax System (RevNet).....	6
2.1.3	RevNet Security.....	6
2.1.4	Australian Business Number In RevNet.....	7
2.2	Authorisation of Intermediaries.....	7
2.3	SBR Interactions.....	7
2.3.1	List Outstanding Obligations	7
2.3.2	List Historic Returns	7
2.3.3	Prefill Monthly Return	7
2.3.4	Calculate Monthly Payroll Tax.....	8
2.3.5	Lodge Monthly Payroll Tax.....	8
2.3.5.1	Direct Debit Payment.....	8
2.3.5.2	Electronic Funds Transfer Payment.....	9
2.3.5.3	BPay and Cheque Payment	9
2.3.6	Amend.....	9
2.4	SBDH Variations.....	9
2.4.1	Business Documents.....	9
2.4.2	Attachments.....	9
2.4.3	Document Identifiers.....	9
2.4.4	Lodgment Date And Time Interpretation.....	10
2.5	Response Messages	10
2.5.1	Messages described in the MIG.....	10
2.5.2	Messages not described in the MIG.....	10
2.5.3	Messages not described at all.....	10
3	Business Overview.....	11
3.1	Schema Use by Date.....	12
4	XBRL Context Specifications.....	13
4.1	Context Specification ReportingParty:	13
4.2	Context Specification GroupStatus:	14
4.3	Context Specification GovernmentAgency:	15
5	Monthly Return Interaction Model.....	17
5.1	Prerequisites.....	17
5.2	Service Summary	17
5.2.1	Lodge Interaction.....	17
5.2.2	Amend Lodge Interaction	18
5.2.3	View Lodgement Interaction.....	19
5.3	List Outstanding Obligations Specifications.....	20
5.4	List Historic Returns Specifications.....	20
5.5	Prefill Monthly Return Specifications.....	20
5.5.1	Prefill Monthly Return Request - Message	20
5.5.1.1	Discoverable Taxonomy Set References.....	20
5.5.1.1	Standard Business Document Header Content.....	21
5.5.1.2	Standard Business Document Body Content.....	22
5.5.2	Prefill Monthly Return Response - Message.....	23
5.5.2.1	Discoverable Taxonomy Set References.....	23
5.5.2.1	Standard Business Document Header Content.....	23
5.5.2.2	Standard Business Document Body Content.....	24

5.6	Calculate Monthly Payroll Tax Specifications	30
5.6.1	Calculate Monthly Payroll Tax Request - Message	30
5.6.1.1	Discoverable Taxonomy Set References.....	30
5.6.1.2	Standard Business Document Header Content.....	30
5.6.1.3	Standard Business Document Body Content.....	31
5.6.2	Calculate Monthly Payroll Tax Response - Message	35
5.6.2.1	Discoverable Taxonomy Set References.....	35
5.6.2.2	Standard Business Document Header Content.....	35
5.6.2.3	Standard Business Document Body Content.....	36
5.7	Lodge Monthly Payroll Tax Specifications	39
5.7.1	Lodge Monthly Payroll Tax Request - Message	39
5.7.1.1	Discoverable Taxonomy Set References.....	39
5.7.1.2	Standard Business Document Header Content.....	40
5.7.1.3	Standard Business Document Body Content.....	41
5.7.2	Lodge Monthly Payroll Tax Response - Message	46
5.7.2.1	Discoverable Taxonomy Set References.....	46
5.7.2.2	Standard Business Document Header Content.....	46
5.7.2.3	Standard Business Document Body Content.....	47
Appendix A – The Message Content Table Explained		51

List of Figures

Figure 1 – RevenueSA Business Interaction Summary	11
Figure 2 – Lodge Monthly Payroll Tax Workflow for RevenueSA	17
Figure 3 – Amend Monthly Payroll Tax Workflow for RevenueSA	18
Figure 4 – View Lodgement Monthly Payroll Tax Workflow for RevenueSA	19

Terminology

For definition of the terminology and acronyms used within this document please refer to the glossary on the SBR website – Click here

http://www.sbr.gov.au/Developers/SBR_Taxonomy/Glossary.aspx to go to the glossary.

The key words “MUST”, “MUST NOT”, “REQUIRED”, “SHALL”, “SHALL NOT”, “SHOULD”, “SHOULD NOT”, “RECOMMENDED”, “MAY”, and “OPTIONAL” in this document are to be interpreted as described in RFC 2119 <http://www.ietf.org/rfc/rfc2119.txt>. The use of the word “Mandatory” is to be read as “MUST”.

1 INTRODUCTION

1.1 PURPOSE

The purpose of this document is to support software developers in the implementation of the SBR payroll tax reporting service for the state of South Australia.

This document should be read in conjunction with the *State and Territory Payroll Tax Message Implementation Guide Overview* and the *RevenueSA Common Message Implementation Guide*.

Formatted: Font: Not Italic

1.2 AUDIENCE AND SCOPE

This document contains the necessary information required to support RevenueSA payroll tax implementation.

1.3 REFERENCES

Ref	Document Link	Document description
1)	State and Territory Payroll Tax Message Implementation Guide Overview document can be downloaded at http://www.sbr.gov.au/Developers/Download/Download_items/OSR - ALL STATES - and territory common MIGs/2009 - ALL OSR - MIG - Common P Tax - v009.aspx	This is the entry document to the individual SRO MIGS. This document provides a holistic view of the SRO payroll tax solutions and highlights where opportunities for consistent solutions have been adopted.
2)	The SBR Web Service Implementation Guide document can be downloaded at http://www.sbr.gov.au/Developers/Download/Common_component_download_items/Web_services/2009 - WIG - Common Components - V2 1e.aspx	Technical interface data that is common to all business processes and messages that use the SBR channel: <ul style="list-style-type: none"> • Web service protocol specifications • Standard message header structure • Standard error codes • Authentication protocol and trust broker
3)	The SBR Taxonomy Architecture document can be downloaded at http://www.sbr.gov.au/Developers/Download/Common_component_download_items/Reusable_components/2009 - SBR - Taxonomy Architecture - v11 2.aspx	Reference document that describes the structure of the SBR taxonomy, its naming conventions, release management and change control, and how each business interaction fits within the architecture.
4)	The Software Developer Kit documentation can be accessed at http://www.sbr.gov.au/Developers/Software_developers_kit.aspx	Reference information for software developers using the SBR software developer kit

Formatted: English (Australia)

Formatted: English (Australia)

Formatted: English (Australia)

Formatted: English (Australia)

Formatted: English (Australia)

Formatted: English (Australia)

Formatted: English (Australia)

Formatted: English (Australia)

Formatted: English (Australia)

1.4 CHANGE MANAGEMENT

If a material change is required to the RevenueSA Payroll Tax *Monthly Return* Message Implementation Guide the document will be re-released. The Taxonomy Approval Committee must approve any change.

Deleted: Payroll Tax

2 GENERAL INSTRUCTIONS

This section provides instructions that are relevant across all collaborations and messages specified within this MIG.

2.1 PAYROLL TAX OVERVIEW

The *Payroll Tax Act 2009* requires that an employer (or a member of a group of employers) who pays wages, which are liable for payroll tax in South Australia, must register for payroll tax as a reporting party with RevenueSA when the Australian wages bill of the employer or group exceeds the wages maximum deduction entitlement (currently \$600,000 annually for 2009/2010).

For a definition of taxable wages refer to RevenueSA Information Circular 2 available www.revenuesa.sa.gov.au.

When a reporting party registers for payroll tax, RevenueSA determines whether they are required to lodge payroll tax returns on a monthly or annual basis.

Payroll tax monthly returns must be submitted by all monthly registered reporting parties to RevenueSA within seven (7) days after the close of the period to which they relate. Failure to lodge and pay by this date may result in penalties and interest applied to the assessment in accordance with the *Taxation Administration Act 1996*.

All monthly registered reporting parties must lodge a payroll tax monthly return each month whether or not the tax payable calculated is \$0. In this case, a nil (\$0) return must be lodged to fulfil the reporting party's obligation.

2.1.1 SBR Registered Payroll Tax Reporting Parties

Reporting parties who wish to lodge monthly returns in South Australia via SBR must be registered with RevenueSA as a monthly return reporting party with a RevenueSA Online Tax System (RevNet) userID. Refer to www.revenuesa.sa.gov.au for information on how to become a RevNet user. They must also obtain an AUSkey credential from the Australian Business Register (ABR). In order to interact with RevNet via SBR, the reporting party must use RevNet to link their RevNet userID to their AUSkey credential.

Deleted: Note: Payroll tax monthly returns are known as periodic returns in SBR.¶

Formatted: Bullets and Numbering

2.1.2 RevenueSA Online Tax System (RevNet)

RevNet provides approved reporting parties with the ability to perform the following functions:

- Register as a payroll tax payer online.
- Complete and lodge South Australian payroll tax monthly returns and annual reconciliations on-line.
- Make on-line payments of payroll tax liabilities.
- View historical payments and lodgements;
- Link RevNet userID to AUSkey credential; and
- Assign access for intermediaries to lodge on reporting party's behalf

2.1.3 RevNet Security

For all web service requests received from SBR, RevenueSA will match the AUSkey credential to a user credential stored in the RevNet database. If the AUSkey credential cannot be matched to a RevNet userID, the user will receive a Sender Simple Object Access Protocol (SOAP) fault of type wsse:InvalidSecurityToken with a message text containing "Security token failed to validate. The SAML token is not valid, it is rejected by CSS".

SOAP faults raised by RevenueSA will have a node value of "http://sbr.gov.au/comn/node/revnet/sa/gov/au". This will distinguish wsse:InvalidSecurityToken SOAP faults that relate to authentication failures at RevenueSA from similar SOAP faults raised by Core Services that may relate to the security token itself.

2.1.4 Australian Business Number In RevNet

For all web service requests received from SBR, RevenueSA will verify that the Australian Business Number (ABN) stored in the AUSKey credential matches the ABN stored for the registered South Australian payroll tax reporting party linked to the RevNet userID. If this ABN is not recognised, error message SBR.GEN.GEN.13 will be returned to the user.

As stated in 2.1.3, for all web service requests received from intermediaries via SBR, RevenueSA will verify that the reporting party has nominated the ABN of the sender to perform the requested action for the ABN of the reporting party within the business document. If this verification fails, error message SA.OSR.AUTH.1090 will be returned to the user.

Deleted: 00

2.2 AUTHORISATION OF INTERMEDIARIES

RevenueSA will allow intermediaries to act on behalf of reporting parties via SBR, subject to authorisation by the reporting party. The intermediary must be authorised by the reporting party in RevNet to act on the reporting party's behalf.

RevNet userIDs will be generated for intermediaries who then must set up the RevNet userIDs and permissions for their employees and specify which companies they are authorised to lodge on behalf of. Note: this will only be the subset of companies which have given prior authority to the intermediary, as stated above.

Employees of the intermediary must also link their RevNet account with their AUSKey credential.

Employees of the intermediary will then be able to lodge monthly returns, annual reconciliations and authorise direct debit payments from the reporting party's bank account (if the reporting party is registered for direct debit).

For all web service requests received from intermediaries via SBR, RevenueSA will verify that the reporting party has nominated the ABN of the sender to perform the requested action for the ABN of the reporting party within the business document. If this verification fails, error message SA.OSR.AUTH.1090 will be returned to the user.

Deleted: 00

2.3 SBR INTERACTIONS

2.3.1 List Outstanding Obligations

Refer to RevenueSA Payroll Tax Common Message Implementation Guide.

2.3.2 List Historic Returns

Refer to RevenueSA Payroll Tax Common Message Implementation Guide.

2.3.3 Prefill Monthly Return

The Prefill Monthly Return service is used to retrieve the details of previously lodged returns. The Prefill Monthly Return service uses the Return Declaration ID (BusinessDocument.GovernmentGeneratedIdentifier.Text) to identify the lodgement to be retrieved.

The Prefill Monthly Return service may be used by users to view previously lodged returns or it may be used to retrieve a lodgement to be amended, depending on the Payment Status retrieved for the lodgement.

2.3.4 Calculate Monthly Payroll Tax

The Calculate Monthly Payroll Tax service is used to calculate the payroll tax payable, based on the wage components provided by the user. This service may be called multiple times prior to lodging the return.

If the payable tax calculated is \$0, a lodgement of \$0 must be submitted in order to fulfil the reporting party's payroll tax obligation. If the payable tax calculated is \$0, the user will receive message SA.OSR.SYS.160.

Deleted: 000

This service may be called multiple times prior to lodging the reconciliation.

2.3.5 Lodge Monthly Payroll Tax

The Lodge Monthly Payroll Tax service is used to lodge a reporting party's monthly payroll tax payable with RevenueSA. When the Lodge Monthly Payroll Tax Request is received, RevenueSA will determine the reporting party's payment method and process the payment accordingly. The user will be provided with the payment details in the Lodge Monthly Payroll Tax Response message.

The user may specify a different amount to that which was calculated for the tax payable in the Calculate [Monthly Payroll Tax Response Message](#).

Deleted: service

The following payment options are available:

2.3.5.1 Direct Debit Payment

Direct Debit users must indicate their payment authorisation as part of the Lodge Monthly Payroll Tax process. To authorise a direct debit payment, the user sets the Preferences.TaxPaymentDirectDebitPayment.Indicator to "Y", otherwise it is set to "N".

If a reporting party is registered for the Direct Debit payment facility, the user must indicate whether or not they authorise the direct debit payment. Upon receiving the lodgement, RevenueSA will check the access level of the RevNet userID to confirm if the user has authority to approve direct debit payments.

If the user has the appropriate authority level, the payment will be processed by RevNet and the funds will be debited from the reporting party's nominated account on the next business day. The user will receive message SA.OSR.SYS.30 in the Lodge Monthly Payroll Tax Response.

Deleted: 0000

If the user does not have sufficient authority to approve direct debit payments or they have not indicated their approval of the direct debit payment in the Lodge Monthly Payroll Tax Request, the lodgement will be accepted by RevenueSA and the user will be informed that a user with sufficient access will need to authorise the payment. The user will receive message SA.OSR.SYS.40 in the Lodge Monthly Payroll Tax Response.

Deleted: 0000

The lodgement is not fulfilled until payment has been received by RevenueSA.

2.3.5.2 Electronic Funds Transfer Payment

If a reporting party is registered to use the RevNet Electronic Funds Transfer (EFT) payment facility, a lodgement will be recorded with an expected payment. The user will be advised via the Lodge Monthly Payroll Tax Response message to pay using the supplied bank account number, BSB and unique reference code. The user will receive message SA.OSR.SYS.50 in the Lodge Monthly Payroll Tax Response. Failure to use the correct reference number may result in interest and penalties or bank fees.

Deleted: 0000

Note: Electronic Funds Transfer payment is known as Payment Method "DirectCredit" within SBR.

2.3.5.3 BPay and Cheque Payment

If a reporting party is not registered to use the electronic payment facility (ie: direct debit or EFT payment), RevenueSA will record a lodgement with an expected payment. The user will be advised to pay via cheque with their payment booklet return slip issued with annual reconciliation correspondence or pay via BPay using RevenueSA's biller code and the unique reference number provided in the Lodge Monthly Payroll Tax Response message. The user will receive message SA.OSR.SYS.60 in the Lodge Monthly Payroll Tax Response.

Deleted: 0000

2.3.6 Amend

To amend a return, a user utilises the Prefill Monthly Return service to retrieve a previously lodged return. When an amended return is lodged, the Return Declaration ID (BusinessDocument.GovernmentGeneratedIdentifier.Text) must be included in the Lodge Monthly Payroll Tax Request message and RevenueSA will use this identifier to detect that it is an amendment. Once received, RevenueSA will determine the payment status of the previous monthly return lodgement. If the status is "Pending", the lodgement may be amended. If the status is "Paid" or "Expired" the lodgement cannot be amended. If the lodgement cannot be amended, the user will receive message SA.OSR.SYS.210 in the Lodge Monthly Payroll Tax Response.

Deleted: 00

Deleted: Annual Reconciliation

Formatted: English (Australia)

2.4 SBDH VARIATIONS

The WIG describes the SBDH content in detail. Described in this section are only variations from what is defined in the WIG.

Formatted: English (Australia)

2.4.1 Business Documents

Only one business document in the SBDB per message will be accepted. Refer to WIG for response code.

Formatted: English (Australia)

2.4.2 Attachments

No attachments will be accepted or provided. Refer to WIG for response code.

Formatted: English (Australia)

2.4.3 Document Identifiers

BusinessDocument.GovernmentGeneratedIdentifier.Text – is used within the Standard Business Document Body to provide the Return Declaration ID once a return has been lodged. A Return Declaration ID is generated upon receipt of a payroll tax monthly return lodgement. The BusinessDocument.GovernmentGeneratedIdentifier.Text element will be provided in the Standard Business Document Body of the Lodge Monthly Payroll Tax Response message.

The BusinessDocument.GovernmentGeneratedIdentifier.Text element within the Standard Business Document Header is not used.

2.4.4 Lodgment Date And Time Interpretation

The SBDH contains a lodgement receipt date and time. This is contained in the element Lodgment.Receipt.Datetime, is in xs:dateTime format and must be provided in UTC time (not local). For Prefill Monthly Return and Calculate Monthly Payroll Tax interactions RevenueSA will not provide a lodgement receipt.

As the xs:dateTime format requires a time, a default 00:00:00 time will be assigned to the lodgement receipt. It should also be noted that conversion of Lodgment.Receipt.Datetime to local time must occur before displaying the date. Failure to perform this conversion could lead to an incorrect date being displayed to the user.

For RevenueSA interactions, a full time and date (in UTC) will be provided.

- Deleted: date
- Formatted: English (Australia)
- Deleted: and
- Deleted: time
- Deleted: interpretation
- Formatted: English (Australia)
- Formatted: English (Australia)
- Formatted: English (Australia)
- Formatted: English (Australia)
- Formatted: English (Australia)

2.5 RESPONSE MESSAGES

2.5.1 Messages described in the MIG

Where business rules associated with data elements could be reasonably implemented by a Software Developer they have been described in the business content tables below along with an associated response message code. A description of response message coding can be found in Appendix A of this document.

- Formatted: English (Australia)

2.5.2 Messages not described in the MIG

Some business rules are implemented within the RevenueSA core processing systems but are not practical to be implemented elsewhere as they refer to business data held within RevenueSA. These messages are listed in the SBR Response Message Repository only.

Examples of these messages follow:

Message Event Item	Value
Message.Event.Item.Error.Code	SA.OSR.DATA.2190
Message.Event.Item.Severity.Code	Error
Message.Event.Item.Short.Description	Context Limit Exceeded
Message.Event.Item.Detailed.Description	The request contains more contexts than are allowed by the agency. Check the specification and resend only with the allowed number of contexts.

- Formatted: English (Australia)
- Formatted: English (Australia)
- Deleted: 00
- Formatted: English (Australia)
- Formatted: English (Australia)
- Formatted: English (Australia)

2.5.3 Messages not described at all

There may be limited messages produced by RevenueSA core processing systems that have not been documented. They will be returned in the format as described above.

3 BUSINESS OVERVIEW

The below diagram illustrates all possible interactions between the reporting party and RevenueSA.

The top half shows all interactions currently available to the reporting party via the RevenueSA portal, RevNet (www.revnet.sa.gov.au).

The interactions which will be available via the SBR channel are shown in the second half of Figure 1.

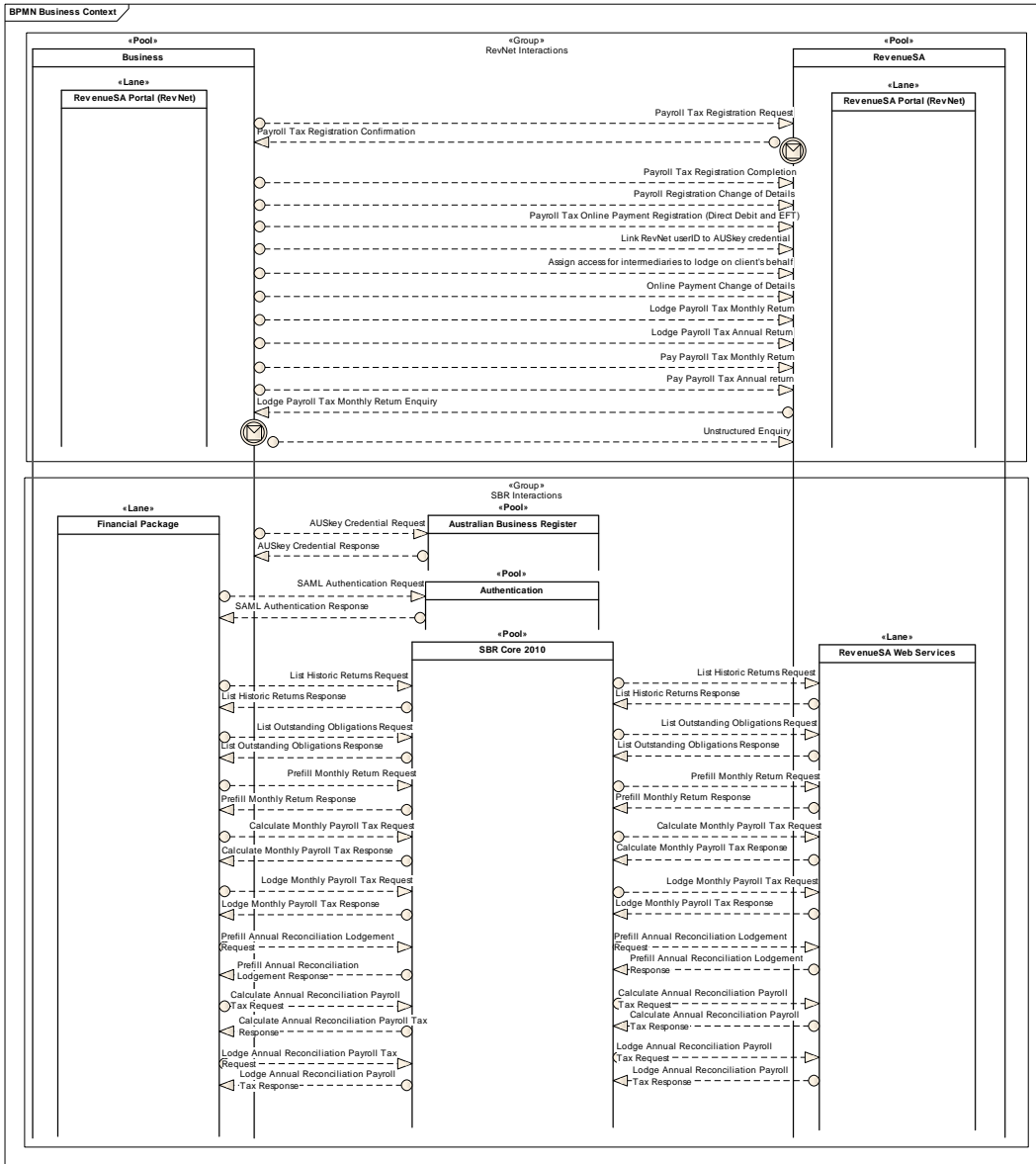


Figure 1 – RevenueSA Business Interaction Summary

3.1 SCHEMA USE BY DATE

RevenueSA requires that the latest reporting taxonomy (n) or the previous version (n-1) must be used regardless of the period that the data relates to.

4 XBRL CONTEXT SPECIFICATIONS

The following sections define the context specifications that will be used within this MIG. The context types are allocated to the individual data elements within the message specifications below.

4.1 CONTEXT SPECIFICATION REPORTINGPARTY:

This context type defines the reporting party (ie: the primary entity to which the report directly relates) and their jurisdiction, in this case SA.

XBRL Instance Context Data Concept	Requirement	Instructions/Rules	Rule Imp	SBR Msg code
Context Identifier	Mandatory	This is a unique identifier used to link the data element to a defined XBRL context. SBR is recommending a four character id starting with 'C' and a three digit sequential number for each context eg C001 1. Must be a valid value	1. XBRL	1.NA
Entity Identifier	Mandatory	This field must be set to the ABN that the business document instance relates to. 1. Must be a valid ABN 2. ABN must be registered with receiving agency	1. MIG 2. MIG	1._SBR.GEN.GEN_1 2._SBR.GEN.GEN_13
Entity Identifier Scheme	Mandatory	1. This field must be set to "http://www.abr.gov.au/abn"	1. MIG	1._SBR.GEN.GEN_14
Entity Segment	Mandatory	1. Explicit member dimension ReportPartyType set to "RprtPyType.02.03:ReportingParty"	1. MIG	1._SBR.GEN.GEN_15
	Mandatory	1. Explicit member dimension = AustralianStatesTerritoriesAndOffshoreAreas must be set to "h01.02.01:SA".	1. MIG	1._SBR.GEN.GEN_15
Period Date - Start Date	Mandatory	The start date will be provided at the message level.	1. NA	1. NA

Deleted: 000

Deleted: 00

Deleted: 00

Deleted: 00

Deleted: 00

XBRL Instance Context Data Concept	Requirement	Instructions/Rules	Rule Imp	SBR Msg code
Period Date - End Date	Mandatory	The start date will be provided at the message level.	1. NA	1. NA

4.2 CONTEXT SPECIFICATION GROUPSTATUS:

This context type is required to identify the reporting party, their jurisdiction and the group member structure they are reporting under.

XBRL Instance Context Data Concept	Requirement	Instructions/Rules	Rule Imp	SBR Msg code
Context Identifier	Mandatory	This is a unique identifier used to link the data element to a defined XBRL context. SBR is recommending a four character id starting with 'C' and a three digit sequential number for each context eg C001 1. Must be a valid value	1. XBRL	1. NA
Entity Identifier	Mandatory	This field must be set to the ABN that the business document instance relates to. 1. Must be a valid ABN 2. ABN must be registered with receiving agency	1. MIG 2. MIG	1. SBR.GEN.GEN.1 2. SBR.GEN.GEN.13
Entity Identifier Scheme	Mandatory	1. This field must be set to "http://www.abr.gov.au/abn"	1. MIG	1. SBR.GEN.GEN.14
Entity Segment	Mandatory	1. Explicit member dimension ReportPartyType set to "RprtPyType.02.03:ReportingParty"	1. MIG	1. SBR.GEN.GEN.15
	Mandatory	1. Explicit member dimension = AustralianStatesTerritoriesAndOffshoreAreas must be set to "h01.02.01:SA".	1. MIG	1. SBR.GEN.GEN.15

Deleted: 000

Deleted: 00

Deleted: 00

Deleted: 00

Deleted: 00

XBRL Instance Context Data Concept	Requirement	Instructions/Rules	Rule Imp	SBR Msg code
	Mandatory	1. Explicit member dimension EmployerGroupStatus must be set to "EmpGrpSts.02.04:NSP".	1. MIG	1. SBR.GEN.GEN.15
Period Date - Start Date	Mandatory	The start date will be provided at the message level.	1. NA	1. NA
Period Date - End Date	Mandatory	The start date will be provided at the message level.	1. NA	1. NA

Deleted: 00

Formatted: English (Australia)

4.3 CONTEXT SPECIFICATION GOVERNMENT AGENCY:

This context type is required to group the facts for the government agency (RevenueSA) and their jurisdiction.

XBRL Instance Context Data Concept	Requirement	Instructions/Rules	Rule Imp	SBR Msg code
Context Identifier	Mandatory	This is a unique identifier used to link the data element to a defined XBRL context. SBR is recommending a four character id starting with 'C' and a three digit sequential number for each context - C001 1. Must be a valid value	1. XBRL	1. NA
Entity Identifier	Mandatory	This field must be set to the ABN that the business document instance relates to. 1. Must be a valid ABN 2. ABN must be registered with receiving agency	1. MIG 2. MIG	1. SBR.GEN.GEN.1 2. SBR.GEN.GEN.13

Deleted: 000

Deleted: 00

XBRL Instance Context Data Concept	Requirement	Instructions/Rules	Rule Imp	SBR Msg code
Entity Identifier Scheme	Mandatory	1. This field must be set to "http://www.abr.gov.au/abn"	1. MIG	1. SBR.GEN.GEN.14
Entity Segment	Mandatory	1. Explicit member dimension ReportPartyType must be set to "RprtPyType.02.03:GovernmentAgency".	1. MIG	1. SBR.GEN.GEN.15
Period Date - Start Date	Mandatory	The start date will be provided at the message level.	1. NA	1. NA
Period Date - End Date	Mandatory	The end date will be provided at the message level.	1. NA	1. NA

Deleted: 00
Formatted Table

Deleted: 00
Formatted: English (Australia)

5 MONTHLY RETURN INTERACTION MODEL

This section describes the sequence / workflow of interactions that are provided through the SBR channel.

5.1 PREREQUISITES

- To successfully interact with RevenueSA, a reporting party must be registered with RevenueSA for payroll tax monthly returns and have provided a valid Australian Business Number (ABN). This registration can be done by completing the payroll tax online registration available through the RevenueSA website (www.revenuesa.sa.gov.au). The reporting party must be registered with RevenueSA on a monthly return cycle to lodge monthly returns via SBR.
- A reporting party must have a RevNet userID.
- A reporting party or intermediary must obtain an AUSKey credential and link it to their RevNet userID before using SBR for lodgement of South Australian Payroll Tax obligations.
- The user must initiate either the List Outstanding Obligations or List Historic Returns services to obtain the Period.Unique.Identifier or BusinessDocument.GovernmentGeneratedIdentifier.Text prior to undertaking the annual reconciliation interactions.

5.2 SERVICE SUMMARY

The workflow defined below represents the abstract process model for the monthly payroll tax return. The following defines the sequence, optionality and repeatability of the service execution. Where a service is identified as 'Mandatory' then the Software Developer has to implement this service as the service needs to be executed by the business in order to complete the transaction. Repeatability indicates if the service can execute the service more than once – 'Yes' meaning that a service can be executed multiple times within the sequence.

Deleted: above

5.2.1 Lodge Interaction

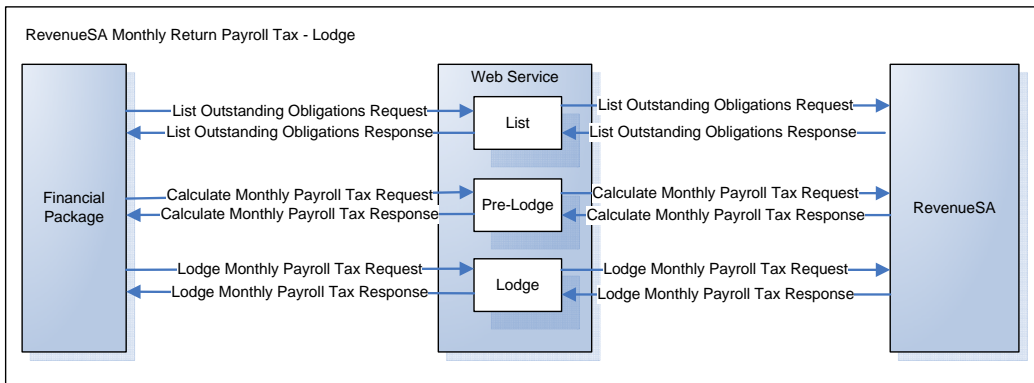


Figure 2 – Lodge Monthly Payroll Tax Workflow for RevenueSA

When a monthly return is lodged the following business services need to be used.

	Service Name	Mandatory	Repeatability
1	<p>List Outstanding Obligations</p> <p>This service will enable users to query a summary listing of their outstanding obligations.</p> <p>This service will also provide the:</p> <ul style="list-style-type: none"> Return Period Identifier for each obligation Estimated Deduction Entitlement amount Payment Method of the reporting party Direct Debit Authorisation Indicator for the user 	Yes	Yes
2	<p>Calculate Monthly Payroll Tax</p> <p>This service allows a user to calculate the tax liability for their monthly return based on the wage components supplied. The calculated payroll tax payable amount may be modified prior to lodging the return.</p>	Yes	Yes
3	<p>Lodge Monthly Payroll Tax</p> <p>This service enables users to lodge their Payroll Tax monthly return and if an approved RevNet payment facility user, may authorise a direct debit payment.</p> <p>If a user wishes to lodge multiple times for a given month, they may do so via this service. Note: this is not the same as an amendment of a previous lodgment as it is considered an additional lodgment and payment for that month - see next section for the summary on amending a lodgment.</p>	Yes	Yes

Formatted: English (Australia)

Formatted: English (Australia)

Formatted: English (Australia)

Formatted: English (Australia)

5.2.2 Amend Lodge Interaction

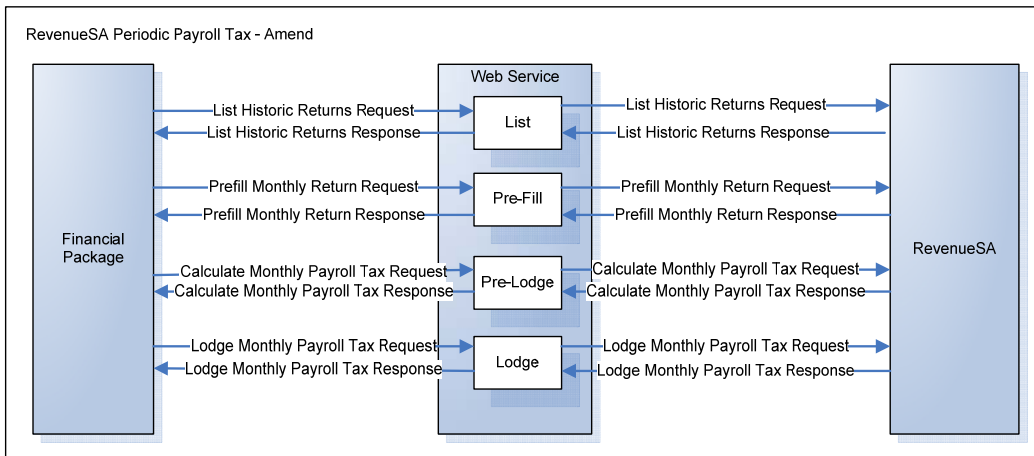


Figure 3 – Amend Monthly Payroll Tax Workflow for RevenueSA

Deleted: Lodge

If a previous lodgement needs to be amended then the following business services need to be used.

	Service Name	Mandatory	Repeatability	
1	List Historic Returns This service will enable users to query a summary listing of their previous lodgments.	Yes	Yes	Formatted: English (Australia)
2	Prefill Monthly Return This service will enable users to retrieve details of specific previous lodgments providing payroll tax payable lodged for each submission.	Yes	Yes	Formatted: English (Australia)
3	Calculate Monthly Payroll Tax This service allows a user to calculate the tax liability for their monthly return. The calculated payroll tax payable may be modified prior to lodging the return.	No	Yes	Formatted: English (Australia)
4	Lodge Monthly Payroll Tax This service enables users to re-lodge a previous Payroll Tax monthly return.	Yes	Yes	Formatted: English (Australia)

Note:

- A BusinessDocument.GovernmentGeneratedIdentifier.Text is supplied within the Lodge **Monthly** Payroll Tax service of the amend interaction which indicates the specific record to be updated. Deleted: Annual Reconciliation
- If a payment has been made for a lodgement it cannot be amended. If an amendment is attempted and RevenueSA identifies that either a direct debit payment has been authorised or an EFT payment exists for the lodgement, the error response code SA.OSR.DATA.2160 will be returned. Deleted: 00

5.2.3 View Lodgement Interaction

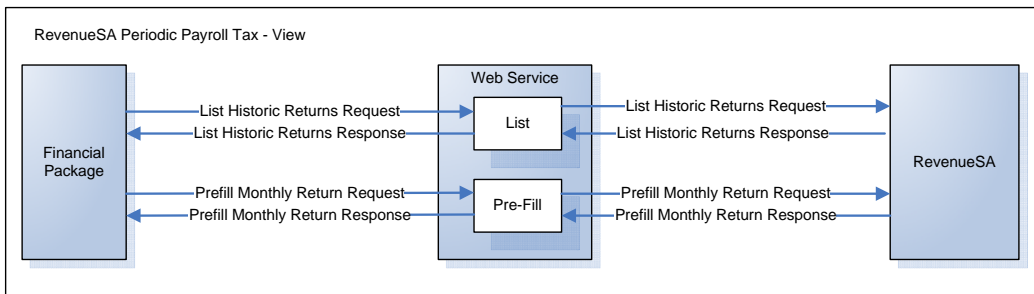


Figure 4 – View Lodgement Monthly Payroll Tax Workflow for RevenueSA

If a user wishes to view a previous lodgement the following business services need to be used.

	Service Name	Mandatory	Repeatability
1	List Historic Returns This service will enable users to query a summary listing of their previous lodgments.	Yes	Yes
2	Prefill Monthly Return This service will enable users to retrieve details of specific previous lodgments providing the relevant amounts originally lodged.	Yes	Yes

Formatted: English (Australia)

Formatted: English (Australia)

Formatted: English (Australia)

5.3 LIST OUTSTANDING OBLIGATIONS SPECIFICATIONS

Refer to RevenueSA Payroll Tax Common Message Implementation Guide.

Formatted: English (Australia)

5.4 LIST HISTORIC RETURNS SPECIFICATIONS

Refer to RevenueSA Payroll Tax Common Message Implementation Guide.

Formatted: English (Australia)

5.5 PREFILL MONTHLY RETURN SPECIFICATIONS

Formatted: English (Australia)

Interaction Name	Prefill Monthly Return
Description	The purpose of this interaction is to retrieve previously lodged returns, using the BusinessDocument.GovernmentGeneratedIdentifier.Text to identify the lodgement to be retrieved.
Stakeholders	Business, State Revenue Offices
Pre-conditions	User has successfully retrieved a list of historic returns and has obtained the Government Generated ID for the lodgement.
Post-conditions	The user receives the details of the specific previously lodged return.
Initiating party	Business
Channel	SBR
Core Service Map	Pre-Fill

5.5.1 Prefill Monthly Return Request - Message

5.5.1.1 Discoverable Taxonomy Set References

Schema	ptmrsa.0001.prefill.request.02.02.report.xsd
Linkbases	ptmrsa.0001.prefill.request.02.02.presLink.xml
	ptmrsa.0001.prefill.request.02.02.labLinkInfoCls.xml
	ptmrsa.0001.prefill.request.02.02.defLink.xml

Deleted: 01

Deleted: 01

Deleted: 01

Deleted: 01

	ptmrsa.0001.prefill.request.02.02.refLink.xml
Example Instance	ptmrsa.0001.prefill.request.02.02.sample.instance.xml
Schematron	NA

Deleted: 01

Deleted: 01

5.5.1.1 Standard Business Document Header Content

The WIG provides the specification of the SBDH. The following table specifies the message specific data element values or any variations to the WIG.

Attribute Name	Instructions / Rules	Rule Imp	SBR Msg code
sbdm:Message.Type.Text	1. Mandatory - Value must be "ptmrsa.0001.prefill.request"	1. MIG	1. SBR.GEN.GEN.4

5.5.1.2 Standard Business Document Body Content

The following describes the facts and context required to be supplied within the XBRL instance document populated into the SBDB element BusinessDocument.Instance.Text

Deleted: i

Deleted: t

5.5.1.2.1 Prefill Monthly Return Request XBRL Context

The Prefill Monthly Return Request message must include the following context specification – see section 4.1 for details:

Context Spec	Hypercube Name	Associated Segment Dimensions	Instructions / Rules	Rule Imp	SBR Msg code
ReportingParty	ReportingPartySA	ReportPartyType, AustralianStatesTerritoriesAndOffShoreAreas	1. Context must only be used once within the instance document 2. The Start Date must be set to the current date. 3. The End Date must be set to the current date.	1. MIG 2. MIG 3. MIG	1. SA.OSR.DATA.2190 2. SBR.GEN.GEN.18 3. SBR.GEN.GEN.20

Deleted: 00

5.5.1.2.2 Prefill Monthly Return Request Message Content Table

The following table contains the facts required in the instance document.

Formatted: English (Australia)

Context – ReportingParty				
Seq No.	XBRL Fact	Instructions / Rules	Rule Imp.	SBR Msg Code
1.	BusinessDocument.GovernmentGeneratedIdentifier.Text	1. Mandatory 2. Must match the value for a previously lodged return – discoverable via List Historic Returns service.	1. MIG 2. MIG	1. SA.OSR.DATA.2110 2. SA.OSR.SYS.20

Deleted: 00

Deleted: 0000

5.5.2 Prefill Monthly Return Response - Message

5.5.2.1 Discoverable Taxonomy Set References

Schema	ptmrsa.0001.prefill.response.02.02.report.xsd	Deleted: 01
Linkbases	ptmrsa.0001.prefill.response.02.02.presLink.xml	Deleted: 01
	ptmrsa.0001.prefill.response.02.02.labLinkInfoCls.xml	Deleted: 01
	ptmrsa.0001.prefill.response.02.02.defLink.xml	Deleted: 01
	ptmrsa.0001.prefill.response.02.02.refLink.xml	Deleted: 01
Example Instance	ptmrsa.0001.prefill.response.02.02.sample.instance.xml	Deleted: 01

5.5.2.1 Standard Business Document Header Content

The WIG provides the specification of the SBDH. The following table specifies the message specific data element values or any variations to the WIG.

Attribute Name	Instructions / Rules
sbdm:Message.Type.Text	1. Mandatory - Value must be "ptmrsa.0001.prefill.response"

5.5.2.2 Standard Business Document Body Content

The following describes the facts and context required to be supplied within the XBRL instance document populated into the SBDB element BusinessDocument. Instance.Text

Deleted: i
Deleted: t

5.5.2.2.1 Prefill Monthly Return Response XBRL Context

The Prefill Monthly Return Response message must include the following context specification – see sections 4.1, 4.2 and 4.3 for details:

Context Spec	Hypercube Name	Associated Segment Dimensions	Instructions / Rules
ReportingParty	ReportingPartySA	ReportPartyType, AustralianStatesTerritoriesAndOffShoreAreas	1. Context will only be used once within the instance document 2. The Start Date will be set to the current date. 3. The End Date will be set to the current date.
GroupStatus	ReportingPartySAGroupStructure	ReportPartyType, AustralianStatesTerritoriesAndOffShoreAreas, EmployerGroupStatus	1. Context will only be used once within the instance document 2. The Start Date will be set to the current date. 3. The End Date will be set to the current date.
GovernmentAgency	GovernmentAgency	ReportPartyType	1. Context will only be used once within the instance document 2. The Start Date will be set to the current date. 3. The End Date will be set to the current date.

5.5.2.2.2 Prefill Monthly Return Response Message Content Table

The following tables contain the facts that must be supplied in the instance document. The data elements have been separated into tables according to the relevant context.

5.5.2.2.2.1 ReportingParty facts

Context – ReportingParty		
Seq No.	XBRL Fact	Instructions / Rules
1	Report.Type.Code	1. Optional

Context – ReportingParty		
Seq No.	XBRL Fact	Instructions / Rules
2	Period.Unique.Identifier	<ol style="list-style-type: none"> 1. Mandatory 2. Will be the same as the value provided via the List Outstanding Obligations service. 3. Cannot be modified
3	BusinessDocument.GovernmentGeneratedIdentifier.Text	<ol style="list-style-type: none"> 1. Mandatory 2. Will be the same as the value provided via the List Historic Returns service. 3. Cannot be modified
4	Lodgment.Status.Code	<ol style="list-style-type: none"> 1. Optional 2. If Lodgment.Status.Code = "Expired", the lodgement cannot be amended.
5	PayrollTax.Deduction.CalculatedTotal.Amount	<ol style="list-style-type: none"> 1. Mandatory
6	PayrollTax.TaxableCalculated.Amount	<ol style="list-style-type: none"> 1. Mandatory
7	PayrollTax.Payable.Amount	<ol style="list-style-type: none"> 1. Mandatory
8	PayrollTaxPayment (tuple one)	
8.1	PaymentRecord.AgencyGeneratedReference.Number	<ol style="list-style-type: none"> 1. Optional 2. If the payment method is "DirectDebit", this element shall be populated.
8.2	PaymentRecord.PaymentStatus.Code	<ol style="list-style-type: none"> 1. Mandatory. 2. If PaymentRecord.PaymentStatus.Code = "Pending", the lodgement can be amended. 3. If PaymentRecord.PaymentStatus.Code = "Paid", the lodgement cannot be amended.
8.3	Preferences.TaxPaymentDirectDebitAuthorisation.Indicator	<ol style="list-style-type: none"> 1. Optional

Context – ReportingParty		
Seq No.	XBRL Fact	Instructions / Rules
8.4	PaymentReference (Tuple one)	
8.4.1	PaymentMechanism.PaymentMethod.Code	1. Mandatory
8.4.2	PaymentMechanism.CustomerReference.Number	1. Optional

5.5.2.2.2 GroupStatus facts

Context - GroupStatus		
Seq No.	XBRL Fact	Instructions / Rules
1	Remuneration.WagesAndSalaries.Payments.Amount	1. Mandatory 2. Value will be a whole number with no special characters
2	Remuneration.EmploymentCommissions.Amount	1. Mandatory 2. Value will be a whole number with no special characters
3	Remuneration.BonusesAndAllowances.Amount	1. Mandatory 2. Value will be a whole number with no special characters
4	Remuneration.Fees.Directors.Amount	1. Mandatory 2. Value will be a whole number with no special characters
5	FringeBenefitsTax.Type2GrossedUp.Amount	1. Mandatory 2. Value will be a whole number with no special characters
6	Remuneration.EmployeeSharesAndOptions.Amount	1. Mandatory 2. Value will be a whole number with no special characters

Context - GroupStatus		
Seq No.	XBRL Fact	Instructions / Rules
7	Remuneration.WagesAndSalaries.ContractorsPayments.Amount	1. Mandatory 2. Value will be a whole number with no special characters
8	Remuneration.EmploymentTermination.Payments.Amount	1. Mandatory 2. Value will be a whole number with no special characters
9	SuperannuationContribution.EmployerContributions.Amount	1. Mandatory 2. Value will be a whole number with no special characters
10	Remuneration.WagesAndSalaries.TaxablePayrollOther.Amount	1. Mandatory 2. Value will be a whole number with no special characters
11	Remuneration.WagesAndSalaries.TaxablePayrollOther.Description	1. Optional 2. Will be populated if Remuneration.WagesAndSalaries.TaxablePayrollOther.Amount is greater than zero
12	Remuneration.WagesAndSalaries.ApprenticesAndTrainees.Amount	1. Optional 2. Value will be a whole number with no special characters
<u>13</u>	<u>Remuneration.WagesAndSalaries.TaxableStateTotal.Amount</u>	<u>1. Mandatory</u> <u>2. Value will be a whole number with no special characters</u>

Formatted: Bullets and Numbering

5.5.2.2.3 GovernmentAgency facts

Context – GovernmentAgency		
Seq No.	XBRL Fact	Instructions / Rules
1	PaymentMechanism (tuple one)	
1.1	PaymentMechanism.PaymentMethod.Code	1.Mandatory

Context – GovernmentAgency		
Seq No.	XBRL Fact	Instructions / Rules
1.2	DirectDebit (tuple zero to one)	
1.2.1	PaymentMechanism.DirectDebitAccount.Identifier	1. Common module data element is not required.
1.2.2	PaymentMechanism.DirectDebitName.Text	1. If the payment method is "DirectDebit", this element shall be populated.
1.2.3	FinancialInstitutionAccount (tuple zero to one)	
1.2.3.1	FinancialInstitutionAccount.BankStateBranch.Number	1. Common module data element is not required.
1.2.3.2	FinancialInstitutionAccount.FinancialInstitutionAccount.Number	1. Common module data element is not required.
1.2.3.3	FinancialInstitutionAccount.FinancialInstitutionAccountName.Text	1. Common module data element is not required.
1.2.3.4	FinancialInstitutionAccount.FinancialInstitutionBranchName.Text	1. Common module data element is not required.
1.2.3.5	FinancialInstitutionAccount.FinancialInstitutionName.Text	1. Common module data element is not required.
1.3	DirectCredit (tuple zero to one)	
1.3.1	PaymentMechanism.DirectCreditAccount.Identifier	1. Common module data element is not required.
1.3.2	PaymentMechanism.DirectCreditName.Text	1. Common module data element is not required.
1.3.3	FinancialInstitutionAccount (tuple zero to one)	
1.3.3.1	FinancialInstitutionAccount.BankStateBranch.Number	1. If the payment method is "DirectCredit", this element shall be populated
1.3.3.2	FinancialInstitutionAccount.FinancialInstitutionAccount.Number	1. If the payment method is "DirectCredit", this element shall be populated
1.3.3.3	FinancialInstitutionAccount.FinancialInstitutionAccountName.Text	1. If the payment method is "DirectCredit", this element shall be populated
1.3.3.4	FinancialInstitutionAccount.FinancialInstitutionBranchName.Text	1. If the payment method is "DirectCredit", this element shall be populated

Deleted: One Only

Context – GovernmentAgency		
Seq No.	XBRL Fact	Instructions / Rules
1.3.3.5	FinancialInstitutionAccount.FinancialInstitutionName.Text	1. If the payment method is "DirectCredit", this element shall be populated
1.4	BPay (tuple zero to one)	
1.4.1	PaymentMechanism.BpayBiller.Code	1. If the payment method is "BPay", this element shall be populated

Formatted: English (Australia)

5.6 CALCULATE MONTHLY PAYROLL TAX SPECIFICATIONS

Interaction Name	Calculate Monthly Payroll Tax
Description	The purpose of this interaction is to allow business to calculate their monthly payroll tax amount. This is a mandatory service.
Stakeholders	Business, State Revenue Offices
Pre-conditions	User has populated the monthly return with all required information.
Post-conditions	The user receives the calculated payroll tax amount for their monthly return, together with the estimated deduction entitlement.
Initiating party	Business
Channel	SBR
Core Service Map	Pre-Lodge

5.6.1 Calculate Monthly Payroll Tax Request - Message

5.6.1.1 Discoverable Taxonomy Set References

Schema	ptmrsa.0001.calculate.request.02.02.report.xsd
Linkbases	ptmrsa.0001.calculate.request.02.02.presLink.xml
	ptmrsa.0001.calculate.request.02.02.labLinkInfoCls.xml
	ptmrsa.0001.calculate.request.02.02.defLink.xml
	ptmrsa.0001.calculate.request.02.02.refLink.xml
Example Instance	ptmrsa.0001.calculate.request.02.02.sample.instance.xml
Schematron	NA

Deleted: 01

Deleted: 01

Deleted: 01

Deleted: 01

Deleted: 01

Deleted: 01

5.6.1.2 Standard Business Document Header Content

The WIG provides the specification of the SBDH. The following table specifies the message specific data element values or any variations to the WIG.

Attribute Name	Rules / Values	Rule Imp	SBR Msg code
sbdm:Message.Type.Text	1. Mandatory - Value must be "ptmrsa.0001.calculate.request"	1. MIG	1. SBR.GEN.GEN.4

5.6.1.3 Standard Business Document Body Content

The following describes the facts and context that must be supplied within the XBRL instance document populated into the SBDB element BusinessDocument.Instance.Text

Deleted: i
Deleted: t

5.6.1.3.1 Calculate Monthly Payroll Tax Request XBRL Context

The Calculate Monthly Payroll Tax Request message must include the following context specification – see sections 4.1 and 4.2 for details:

Context Spec	Hypercube Name	Associated Segment Dimensions	Instructions / Rules	Rule Imp	SBR Msg code
ReportingParty	ReportingPartySA	ReportPartyType, AustralianStatesTerritoriesAndOffShoreAreas	1. Context will only be used once within the instance document 2. The Start Date should be set to the current date. 3. The End Date should be set to the current date.	1. MIG 2. MIG 3. MIG	1. SA.OSR.DATA.2190 2. SBR.GEN.GEN.18 3. SBR.GEN.GEN.20
GroupStatus	ReportingPartySAGroupStructure	ReportPartyType, AustralianStatesTerritoriesAndOffShoreAreas, EmployerGroupStatus	1. Context must only be used once within the instance document 2. The Start Date should be set to the current date. 3. The End Date should be set to the current date.	1. MIG 2. MIG 3. MIG	1. SA.OSR.DATA.2190 2. SBR.GEN.GEN.18 3. SBR.GEN.GEN.20

Deleted: 00

Deleted: 00

5.6.1.3.2 Calculate Monthly Payroll Tax Request Message Content Table

The following tables contain the facts that must be supplied in the instance document. The data elements have been separated into tables according to the relevant context.

Formatted: English (Australia)

5.6.1.3.2.1 ReportingParty facts

Context - ReportingParty				
Seq No.	XBRL Fact	Instructions / Rules	Rule Imp	SBR Msg Code
1.	Period.Unique.Identifier	1. Mandatory 2. Must be the same as the value provided via the List Outstanding Obligations service.	1. MIG 2. NA	1. SA.OSR.DATA.2110 2. NA

Context - ReportingParty				
Seq No.	XBRL Fact	Instructions / Rules	Rule Imp	SBR Msg Code
2.	PayrollTax.Deduction.CalculatedTotal.Amount	1. Optional 2. If entered, the value must be greater than or equal to zero	1. MIG 2. MIG	1. NA 2. SA.OSR.DATA_2010

Deleted: 00

5.6.1.3.2.2 GroupStatus facts

Context - GroupStatus				
Seq No.	XBRL Fact	Instructions / Rules	Rule Imp.	SBR Msg Code
1.	Remuneration.WagesAndSalaries.Payments.Amount	1. Mandatory 2. Value must be greater than or equal to zero 3. Value must be a whole number with no special characters	1. MIG 2. MIG 3. MIG	1. SA.OSR.DATA_2110 2. SA.OSR.DATA_2010 3. SA.OSR.DATA_2130
2.	Remuneration.EmploymentCommissions.Amount	1. Mandatory 2. Value must be greater than or equal to zero 3. Value must be a whole number with no special characters	1. MIG 2. MIG 3. MIG	1. SA.OSR.DATA_2110 2. SA.OSR.DATA_2010 3. SA.OSR.DATA_2130
3.	Remuneration.BonusesAndAllowances.Amount	1. Mandatory 2. Value must be greater than or equal to zero 3. Value must be a whole number with no special characters	1. MIG 2. MIG 3. MIG	1. SA.OSR.DATA_2110 2. SA.OSR.DATA_2010 3. SA.OSR.DATA_2130
4.	Remuneration.Fees.Directors.Amount	1. Mandatory 2. Value must be greater than or equal to zero 3. Value must be a whole number with no special characters	1. MIG 2. MIG 3. MIG	1. SA.OSR.DATA_2110 2. SA.OSR.DATA_2010 3. SA.OSR.DATA_2130

Deleted: -

Deleted: 00

Deleted: 00

Deleted: 00

Deleted: 00

Deleted: 00

Deleted: 00

Deleted: 00

Deleted: 00

Deleted: 00

Deleted: 00

Deleted: 00

Deleted: 00

Context GroupStatus				
Seq No.	XBRL Fact	Instructions / Rules	Rule Imp.	SBR Msg Code
5.	FringeBenefitsTaxType2GrossedUp.Amount	1. Mandatory 2. Value must be greater than or equal to zero 3. Value must be a whole number with no special characters	1. MIG 2. MIG 3. MIG	1. SA.OSR.DATA_2110 2. SA.OSR.DATA_2010 3. SA.OSR.DATA_2130
6.	Remuneration.EmployeeSharesAndOptions.Amount	1. Mandatory 2. Value must be greater than or equal to zero 3. Value must be a whole number with no special characters	1. MIG 2. MIG 3. MIG	1. SA.OSR.DATA_2110 2. SA.OSR.DATA_2010 3. SA.OSR.DATA_2130
7.	Remuneration.WagesAndSalaries.ContractorsPayments.Amount	1. Mandatory 2. Value must be greater than or equal to zero 3. Value must be a whole number with no special characters	1. MIG 2. MIG 3. MIG	1. SA.OSR.DATA_2110 2. SA.OSR.DATA_2010 3. SA.OSR.DATA_2130
8.	Remuneration.EmploymentTermination.Payments.Amount	1. Mandatory 2. Value must be greater than or equal to zero 3. Value must be a whole number with no special characters	1. MIG 2. MIG 3. MIG	1. SA.OSR.DATA_2110 2. SA.OSR.DATA_2010 3. SA.OSR.DATA_2130
9.	SuperannuationContribution.EmployerContributions.Amount	1. Mandatory 2. Value must be greater than or equal to zero 3. Value must be a whole number with no special characters	1. MIG 2. MIG 3. MIG	1. SA.OSR.DATA_2110 2. SA.OSR.DATA_2010 3. SA.OSR.DATA_2130
10.	Remuneration.WagesAndSalaries.TaxablePayrollOther.Amount	1. Mandatory 2. Value must be greater than or equal to zero 3. Value must be a whole number with no special characters	1. MIG 2. MIG 3. MIG	1. SA.OSR.DATA_2110 2. SA.OSR.DATA_2010 3. SA.OSR.DATA_2130
11.	Remuneration.WagesAndSalaries.TaxablePayrollOther.Description	1. Optional 2. Must be populated if Remuneration.WagesAndSalaries.TaxablePayrollOther.Amount is greater than zero.	1. NA 2. MIG	1. NA 2. SA.OSR.DATA_2110

Deleted: -

Deleted: 00

Deleted: 00

Deleted: 00

Deleted: 00

Deleted: 00

Deleted: 00

Deleted: 00

Deleted: 00

Deleted: 00

Deleted: 00

Deleted: 00

Deleted: 00

Deleted: 00

Deleted: 00

Deleted: 00

Deleted: 00

Deleted: 00

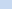
Deleted: 00

Deleted: 00

Deleted: 00

Deleted: MIG

Deleted: 00

Context  GroupStatus				
Seq No.	XBRL Fact	Instructions / Rules	Rule Imp.	SBR Msg Code
<u>12.</u>	<u>Remuneration.WagesAndSalaries.ApprenticesAndTrainees.Amount</u>	<u>1. Optional</u> <u>2. Value must be a whole number with no special characters</u>	<u>1. NA</u> <u>2. MIG</u>	<u>1. NA</u> <u>2. SA.OSR.DATA.2130</u>

Deleted: -

Formatted: Bullets and Numbering

5.6.2 Calculate Monthly Payroll Tax Response - Message

5.6.2.1 Discoverable Taxonomy Set References

Schema	ptmrsa.0001.calculate.response.02.02.report.xsd	Deleted: 01
Linkbases	ptmrsa.0001.calculate.response.02.02.presLink.xml	Deleted: 01
	ptmrsa.0001.calculate.response.02.02.labLinkInfoCls.xml	Deleted: 01
	ptmrsa.0001.calculate.response.02.02.defLink.xml	Deleted: 01
	ptmrsa.0001.calculate.response.02.02.refLink.xml	Deleted: 01
Example Instance	ptmrsa.0001.calculate.response.02.02.sample.instance.xml	Deleted: 01

5.6.2.2 Standard Business Document Header Content

The WIG provides the specification of the SBDH. The following table specifies the message specific data element values or any variations to the WIG.

Attribute Name	Rules / Values
sbdm:Message.Type.Text	1. Mandatory - Value will be "ptmrsa.0001.calculate.response"

5.6.2.3 Standard Business Document Body Content

The following describes the facts and context that must be supplied within the XBRL instance document populated into the SBDB element BusinessDocument.Instance.Text

Deleted: i

Deleted: t

5.6.2.3.1 Calculate Monthly Payroll Tax Response XBRL Context

The Calculate Monthly Payroll Tax Response message must include the following context specification – see sections 4.1, 4.2 and 4.3 for details:

Context Spec	Hypercube Name	Associated Segment Dimensions	Instructions / Rules
ReportingParty	ReportingPartySA	ReportPartyType, AustralianStatesTerritoriesAndOffShoreAreas	<ol style="list-style-type: none"> Context will only be used once within the instance document The Start Date will be set to the current date. The End Date will be set to the current date.
GroupStatus	ReportingPartySAGroupStructure	ReportPartyType, AustralianStatesTerritoriesAndOffShoreAreas, EmployerGroupStatus	<ol style="list-style-type: none"> Context will only be used once within the instance document The Start Date will be set to the current date. The End Date will be set to the current date.
GovernmentAgency	GovernmentAgency	ReportPartyType	<ol style="list-style-type: none"> Context will only be used once within the instance document The Start Date will be set to the current date. The End Date will be set to the current date.

5.6.2.3.2 Calculate Monthly Payroll Tax Response Message Content Table

The following tables contain the facts that must be supplied in the instance document. The data elements have been separated into tables according to the relevant context.

5.6.2.3.2.1 ReportingParty Facts

Context – ReportingParty		
Seq No.	XBRL Fact	Instructions / Rules
1.	PayrollTax.Deduction.CalculatedTotal.Amount	1. Mandatory
2.	PayrollTax.TaxableCalculated.Amount	1. Mandatory
3.	PayrollTax.PayableTaxCalculated.Amount	1. Mandatory

Formatted: English (Australia)

Formatted: English (Australia)

Deleted: -

5.6.2.3.2.2 GroupStatus Facts

Context – GroupStatus		
Seq No.	XBRL Fact	Instructions / Rules
1.	Remuneration.WagesAndSalaries.TaxableStateTotal.Amount	1. Mandatory 2. Value will be a whole number with no special characters

Deleted: -

5.6.2.3.2.3 GovernmentAgency Facts

Context – GovernmentAgency		
Seq No.	XBRL Fact	Instructions / Rules
1.	TaxRate (Tuple zero to one)	
1.1.	TaxRate.Type.Code	1. Mandatory

Context – GovernmentAgency		
Seq No.	XBRL Fact	Instructions / Rules
1.2.	TaxRate.Designation.Rate	1. Mandatory

Formatted: English (Australia)

5.7 LODGE MONTHLY PAYROLL TAX SPECIFICATIONS

Interaction Name	Lodge Monthly Payroll Tax
Description	<p>The purpose of this interaction is to allow business to lodge their monthly payroll tax payable with RevenueSA.</p> <p>RevenueSA will determine the reporting party’s payment method and process the payment accordingly.</p>
Stakeholders	Business, State Revenue Offices
Pre-conditions	<p>User has:</p> <ul style="list-style-type: none"> retrieved a list of outstanding obligations obtained the Return Period ID for the lodgement calculated their tax liability using the SBR Calculate service.
Post-conditions	<p>The user receives confirmation that the lodgement has been received or an error.</p> <p>If the user is registered for Direct Debit payment and they have authorised the payment via an indicator within the lodge request message, then the payment is processed and the user receives the details in the response message.</p> <p>If the user is registered for Direct Debit payment and they have not authorised the payment or they don’t have sufficient authority to approve Direct Debit payments the lodgement is received and the user is instructed to go to RevNet to authorise the payment.</p> <p>If the user is registered for EFT payment they receive the details to transfer the funds to RevenueSA.</p> <p>If the user is not registered to use the electronic payment facility, the response will advise them to pay via cheque with their payment booklet return slip or via BPay using RevenueSA’s biller code and the Unique Reference Number provided.</p>
Initiating party	Business
Channel	SBR
Core Service Map	Lodge

5.7.1 Lodge Monthly Payroll Tax Request - Message

5.7.1.1 Discoverable Taxonomy Set References

Schema	ptmrsa.0001.lodge.request.02.02.report.xsd
Linkbases	ptmrsa.0001.lodge.request.02.02.presLink.xml
	ptmrsa.0001.lodge.request.02.02.labLinkInfoCls.xml
	ptmrsa.0001.lodge.request.02.02.defLink.xml
	ptmrsa.0001.lodge.request.02.02.refLink.xml

Deleted: 01

Deleted: 01

Deleted: 01

Deleted: 01

Deleted: 01

Example Instance	ptmrsa.0001.lodge.request.02_02.sample.instance.xml
Schematron	NA

Deleted: 01

5.7.1.2 Standard Business Document Header Content

The WIG provides the specification of the SBDH. The following table specifies the message specific data element values or any variations to the WIG.

Attribute Name	Rules / Values	Rule Imp	SBR Msg code
sbdm:Message.Type.Text	1. Mandatory - Value must be "ptmrsa.0001.lodge.request"	1. MIG	1. SBR.GEN.GEN.4

5.7.1.3 Standard Business Document Body Content

The following describes the facts and context that must be supplied within the XBRL instance document populated into the SBDB element BusinessDocument.Instance.Text

5.7.1.3.1 Lodge Monthly Payroll Tax Request XBRL Context

The Lodge Monthly Payroll Tax Request message must include the following context specification – see sections 4.1 and 4.2 for details:

Context Spec	Hypercube Name	Associated Segment Dimensions	Instructions / Rules	Rule Imp	SBR Msg code
ReportingParty	ReportingPartySA	ReportPartyType, AustralianStatesTerritoriesAndOffShoreAreas	1. Context must only be used once within the instance document 2. The Start Date must be set to the current date. 3. The End Date must be set to the current date.	1. MIG 2. MIG 3. MIG	1. SA.OSR.DATA.2190 2. SBR.GEN.GEN.18 3. SBR.GEN.GEN.20
GroupStatus	ReportingPartySAGroupStructure	ReportPartyType, AustralianStatesTerritoriesAndOffShoreAreas, EmployerGroupStatus	1. Context must only be used once within the instance document 2. The Start Date must be set to the current date. 3. The End Date must be set to the current date.	1. MIG 2. MIG 3. MIG	1. SA.OSR.DATA.2190 2. SBR.GEN.GEN.18 3. SBR.GEN.GEN.20

Deleted: i
Deleted: t
Deleted: Periodic
Deleted: Periodic

Deleted: 00

Deleted: 00

5.7.1.3.2 Lodge Monthly Payroll Tax Request Message Content Table

The following tables contain the facts that must be supplied in the instance document. The data elements have been separated into tables according to the relevant context.

5.7.1.3.2.1 ReportingParty Facts

Context ReportingParty				
Seq No.	XBRL Fact	Instructions / Rules	Rule Imp.	SBR Msg Code
1.	Period.Unique.Identifier	1. Mandatory	1. MIG	1. SA.OSR.DATA.2110

Formatted: English (Australia)
Formatted: English (Australia)
Deleted: -
Deleted: 00
Deleted: . . .
Formatted: Tabs: 342 pt, Centered + 675 pt, Right + Not at 198 pt + 324.5 pt
Deleted: . . .

Context - ReportingParty				
Seq No.	XBRL Fact	Instructions / Rules	Rule Imp.	SBR Msg Code
2.	BusinessDocument.GovernmentGeneratedIdentifier.Text	1. The element is not populated for new lodgements. 2. This element is populated if the interaction is an amendment to a previously lodged return as this is used to identify the lodgement to be amended. 3. Must match the value of the original lodgement. (Provided in Lodge Response, discoverable via List Historic Returns or Prefill Monthly Return services).	1. MIG 2. MIG 3. MIG	1. NA 2. NA 3. SA.OSR.DATA 2020
3.	Report.Type.Code	1. Value must be "PTMR"	1. MIG	1. SBR.GEN.GEN.21
4.	PayrollTax.TaxableCalculated.Amount	1. Mandatory 2. Value must be greater than or equal to zero.	1. MIG 2. MIG	1. SA.OSR.DATA 2110 2. SA.OSR.DATA 2010
5.	PayrollTax.Deduction.CalculatedTotal.Amount	1. Mandatory 2. Value must be greater than or equal to zero	1. MIG 2. MIG	1. SA.OSR.DATA 2110 2. SA.OSR.DATA 2010
6.	PayrollTax.Payable.Amount	1. Mandatory 2. Value must be greater than or equal to zero 3. This amount may be different to the PayrollTax.PayableTaxCalculated.Amount provided in the Calculate Monthly Payroll Tax Response.	1. MIG 2. MIG 3. MIG	1. SA.OSR.DATA 2110 2. SA.OSR.DATA 2010 3. SA.OSR.SYS 170

Deleted: -

Deleted: 00

Deleted: 00

Deleted: 00

Deleted: 00

Deleted: 00

Deleted: 00

Deleted: 00

Deleted: 000

Deleted: . . .

Formatted: Tabs: 342 pt, Centered + 675 pt, Right + Not at 198 pt + 324.5 pt

Deleted: . . .

Context ReportingParty				
Seq No.	XBRL Fact	Instructions / Rules	Rule Imp.	SBR Msg Code
7.	PayrollTaxPayment (tuple one)			
7.1.	Preferences.TaxPaymentDirectDebitAuthorisation.Indicator	1. Must be used to authorise Direct Debit payments. 2. If true, the payment will be processed by RevenueSA. 3. If true, the user must have authority to approve Direct Debit payments in RevNet. 4. If false, the payment will not be processed by RevenueSA. The lodgement will be accepted, but the payment will need to be authorised to fulfil the obligation. 5. Must not be used by EFT, Cheque or BPay payers.	1. MIG 2. MIG 3. MIG 4. MIG 5. MIG	1. NA 2. SA.OSR.SYS 30 3. SA.OSR.AUTH 1050 4. SA.OSR.SYS 40 5. NA

Deleted: -

Deleted: 0000

Deleted: 00

Deleted: 0000

5.7.1.3.2.2 GroupStatus Facts

Context GroupStatus				
Seq No.	XBRL Fact	Instructions / Rules	Rule Imp.	SBR Msg Code
1.	Remuneration.WagesAndSalaries.Payments.Amount	1. Mandatory 2. Value must be greater than or equal to zero 3. Value must be a whole number with no special characters	1. MIG 2. MIG 3. MIG	1. SA.OSR.DATA 2110 2. SA.OSR.DATA 2010 3. SA.OSR.DATA 2130
2.	Remuneration.EmploymentCommissions.Amount	1. Mandatory 2. Value must be greater than or equal to zero 3. Value must be a whole number with no special characters	1. MIG 2. MIG 3. MIG	1. SA.OSR.DATA 2110 2. SA.OSR.DATA 2010 3. SA.OSR.DATA 2130
3.	Remuneration.BonusesAndAllowances.Amount	1. Mandatory 2. Value must be greater than or equal to zero 3. Value must be a whole number with no special characters	1. MIG 2. MIG 3. MIG	1. SA.OSR.DATA 2110 2. SA.OSR.DATA 2010 3. SA.OSR.DATA 2130

Deleted: -

Deleted: 00

Deleted: 00

Deleted: 00

Deleted: 00

Deleted: 00

Deleted: 00

Deleted: 00

Deleted: 00

Deleted: 00

Formatted: Tabs: 342 pt, Centered + 675 pt, Right + Not at 198 pt + 324.5 pt

Deleted: . . .

Deleted: . . .

Context GroupStatus				
Seq No.	XBRL Fact	Instructions / Rules	Rule Imp.	SBR Msg Code
4.	Remuneration.Fees.Directors.Amount	1. Mandatory 2. Value must be greater than or equal to zero 3. Value must be a whole number with no special characters	1. MIG 2. MIG 3. MIG	1. SA.OSR.DATA.2110 2. SA.OSR.DATA.2010 3. SA.OSR.DATA.2130
5.	FringeBenefitsTax.Type2GrossedUp.Amount	1. Mandatory 2. Value must be greater than or equal to zero 3. Value must be a whole number with no special characters	1. MIG 2. MIG 3. MIG	1. SA.OSR.DATA.2110 2. SA.OSR.DATA.2010 3. SA.OSR.DATA.2130
6.	Remuneration.EmployeeSharesAndOptions.Amount	1. Mandatory 2. Value must be greater than or equal to zero 3. Value must be a whole number with no special characters	1. MIG 2. MIG 3. MIG	1. SA.OSR.DATA.2110 2. SA.OSR.DATA.2010 3. SA.OSR.DATA.2130
7.	Remuneration.WagesAndSalaries.ContractorsPayments.Amount	1. Mandatory 2. Value must be greater than or equal to zero 3. Value must be a whole number with no special characters	1. MIG 2. MIG 3. MIG	1. SA.OSR.DATA.2110 2. SA.OSR.DATA.2010 3. SA.OSR.DATA.2130
8.	Remuneration.EmploymentTermination.Payments.Amount	1. Mandatory 2. Value must be greater than or equal to zero 3. Value must be a whole number with no special characters	1. MIG 2. MIG 3. MIG	1. SA.OSR.DATA.2110 2. SA.OSR.DATA.2010 3. SA.OSR.DATA.2130
9.	SuperannuationContribution.EmployerContributions.Amount	1. Mandatory 2. Value must be greater than or equal to zero 3. Value must be a whole number with no special characters	1. MIG 2. MIG 3. MIG	1. SA.OSR.DATA.2110 2. SA.OSR.DATA.2010 3. SA.OSR.DATA.2130
10.	Remuneration.WagesAndSalaries.TaxablePayrollOther.Amount	1. Mandatory 2. Value must be greater than or equal to zero 3. Value must be a whole number with no special characters	1. MIG 2. MIG 3. MIG	1. SA.OSR.DATA.2110 2. SA.OSR.DATA.2010 3. SA.OSR.DATA.2130

Deleted: -

Deleted: 00

Deleted: 00

Deleted: 00

Deleted: 00

Deleted: 00

Deleted: 00

Deleted: 00

Deleted: 00

Deleted: 00

Deleted: 00

Deleted: 00

Deleted: 00

Deleted: 00

Deleted: 00

Deleted: 00

Deleted: 00

Deleted: 00

Deleted: 00

Deleted: 00

Deleted: 00

Deleted: 00

Deleted: . . .

Formatted: Tabs: 342 pt, Centered + 675 pt, Right + Not at 198 pt + 324.5 pt

Deleted: . . .

Context GroupStatus				
Seq No.	XBRL Fact	Instructions / Rules	Rule Imp.	SBR Msg Code
11.	Remuneration.WagesAndSalaries.TaxablePayrollOther.Description	1. Optional 2. Must be populated if Remuneration.WagesAndSalaries.TaxablePayrollOther.Amount is greater than zero.	1. NA 2. MIG	1. NA 2. SA.OSR.DATA.2110
<u>12.</u>	<u>Remuneration.WagesAndSalaries.ApprenticesAndTrainees.Amount</u>	<u>1. Optional</u> <u>2. Value must be a whole number with no special characters</u>	<u>1. NA</u> <u>2. MIG</u>	<u>1. NA</u> <u>2. SA.OSR.DATA.2130</u>
13.	Remuneration.WagesAndSalaries.TaxableStateTotal.Amount	1. Mandatory 2. Value must be greater than or equal to zero 3. Value must be a whole number with no special characters	1. MIG 2. MIG 3. MIG	1. SA.OSR.DATA.2110 2. SA.OSR.DATA.2010 3. SA.OSR.DATA.2130

Deleted: -

Deleted: 00

Formatted: Bullets and Numbering

Deleted: 00

Deleted: 00

Deleted: 00

Deleted: . . .

Formatted: Tabs: 342 pt, Centered + 675 pt, Right + Not at 198 pt + 324.5 pt

Deleted: . . .

5.7.2 Lodge Monthly Payroll Tax Response - Message

5.7.2.1 Discoverable Taxonomy Set References

Schema	ptmrsa.0001.lodge.response.02.02.report.xsd	Deleted: 01
Linkbases	ptmrsa.0001.lodge.response.02.02.presLink.xml	Deleted: 01
	ptmrsa.0001.lodge.response.02.02.labLinkInfoCls.xml	Deleted: 01
	ptmrsa.0001.lodge.response.02.02.defLink.xml	Deleted: 01
	ptmrsa.0001.lodge.response.02.02.refLink.xml	Deleted: 01
Example Instance	ptmrsa.0001.lodge.response.02.02.sample.instance.xml	Deleted: 01

5.7.2.2 Standard Business Document Header Content

The WIG provides the specification of the SBDH. The following table specifies the message specific data element values or any variations to the WIG.

Attribute Name	Rules / Values	Rule Imp	SBR Msg code
sbdm:Message.Type.Text	1. Mandatory - Value must be "ptmrsa.0001.lodge.response"	1. MIG	1. SBR.GEN.GEN.4

5.7.2.3 Standard Business Document Body Content

The following describes the facts and context that must be supplied within the XBRL instance document populated into the SBDB element BusinessDocument.Instance.Text

Deleted: i

Deleted: t

5.7.2.3.1 Lodge Monthly Payroll Tax Response XBRL Context

The Lodge Monthly Payroll Tax Response message must include the following context specification – see sections 4.1, 4.2 and 4.3 for details:

Context Spec	Hypercube Name	Associated Segment Dimensions	Instructions / Rules
ReportingParty	ReportingPartySA	ReportPartyType, AustralianStatesTerritoriesAndOffShoreAreas	<ol style="list-style-type: none"> Context will only be used once within the instance document The Start Date will be set to the current date. The End Date will be set to the current date.
GroupStatus	ReportingPartySAGroupStructure	ReportPartyType, AustralianStatesTerritoriesAndOffShoreAreas, EmployerGroupStatus	<ol style="list-style-type: none"> Context will only be used once within the instance document The Start Date will be set to the current date. The End Date should be set to the current date.
GovernmentAgency	GovernmentAgency	ReportPartyType	<ol style="list-style-type: none"> Context will only be used once within the instance document The Start Date will be set to the current date. The End Date will be set to the current date.

5.7.2.3.2 Lodge Monthly Payroll Tax Response Message Content Table

The following tables contain the facts must be supplied in the instance document. The data elements have been separated into tables according to the relevant context.

Formatted: English (Australia)

5.7.2.3.2.1 ReportingParty Facts

Context: ReportingParty		
Seq No.	XBRL Fact	Instructions / Rules
1.	Identifiers.StateRevenueOfficeClientNumber.Identifier	1. Mandatory
2.	BusinessDocument.GovernmentGeneratedIdentifier.Text	1. Mandatory
3.	Lodgment.Received.Date	1. Mandatory
4.	Lodgment.Received.Time	1. Mandatory
5.	Period.Unique.Identifier	1. Mandatory
6.	Report.Type.Code	1. Optional
7.	OrganisationNameDetails (tuple zero to one)	
7.1.	OrganisationNameDetails.OrganisationalNameType.Code	1. Mandatory
7.2.	OrganisationNameDetails.OrganisationalName.Text	1. Mandatory
8.	PayrollTax.Deduction.CalculatedTotal.Amount	1. Optional
9.	PayrollTax.TaxableCalculated.Amount	1. Optional
10.	PayrollTaxPayment (Tuple one)	
10.1.	PaymentRecord.AgencyGeneratedReference.Number	1. Optional 2. If the payment method is "DirectDebit", this element shall be populated.

Deleted: -

Context - ReportingParty		
Seq No.	XBRL Fact	Instructions / Rules
10.2.	PaymentRecord.Payment.Amount	1. Mandatory
10.3.	PaymentReference(Tuple one)	
10.3.1.	PaymentMechanism.PaymentMethod.Code	1. Mandatory
10.3.2.	PaymentMechanism.CustomerReference.Number	1. If the payment method is "Direct Credit" or "BPay" this element shall be populated

Deleted: -

5.7.2.3.2.2 GroupStatus Facts

Context - GroupStatus		
Seq No.	XBRL Fact	Instructions / Rules
1.	Remuneration.WagesAndSalaries.TaxableStateTotal.Amount	1. Optional

Deleted: -

5.7.2.3.2.3 GovernmentAgency Facts

Context - GovernmentAgency		
Seq No.	XBRL Fact	Instructions / Rules
1.	PaymentMechanism (Tuple: zero to many)	
1.1.	PaymentMechanism.PaymentMethod.Code	1. Mandatory
1.2.	PaymentMechanism.Instruction.Text	1. Optional
1.3.	DirectDebit (tuple zero to one)	
1.3.1.	PaymentMechanism.DirectDebitAccount.Identifier	1. Common module data element is not required.
1.3.2.	PaymentMechanism.DirectDebitName.Text	1. If the payment method is "DirectDebit", this element shall be populated.

Context – GovernmentAgency		
Seq No.	XBRL Fact	Instructions / Rules
1.3.3.	FinancialInstitutionAccount (tuple zero to one)	
1.3.3.1.	FinancialInstitutionAccount.BankStateBranch.Number	1. Common module data element is not required.
1.3.3.2.	FinancialInstitutionAccount.FinancialInstitutionAccount.Number	1. Common module data element is not required.
1.3.3.3.	FinancialInstitutionAccount.FinancialInstitutionAccountName.Text	1. Common module data element is not required.
1.3.3.4.	FinancialInstitutionAccount.FinancialInstitutionBranchName.Text	1. Common module data element is not required.
1.3.3.5.	FinancialInstitutionAccount.FinancialInstitutionName.Text	1. Common module data element is not required.
1.4.	DirectCredit (tuple zero to one)	
1.4.1.	PaymentMechanism.DirectCreditAccount.Identifier	1. Common module data element is not required.
1.4.2.	PaymentMechanism.DirectCreditName.Text	1. Common module data element is not required.
1.4.3.	FinancialInstitutionAccount (tuple zero to one)	
1.4.3.1.	FinancialInstitutionAccount.BankStateBranch.Number	1. If the payment method is "DirectCredit" this element shall be populated
1.4.3.2.	FinancialInstitutionAccount.FinancialInstitutionAccount.Number	1. If the payment method is "DirectCredit", this element shall be populated
1.4.3.3.	FinancialInstitutionAccount.FinancialInstitutionAccountName.Text	1. If the payment method is "DirectCredit", this element shall be populated
1.4.3.4.	FinancialInstitutionAccount.FinancialInstitutionBranchName.Text	1. If the payment method is "DirectCredit", this element shall be populated
1.4.3.5.	FinancialInstitutionAccount.FinancialInstitutionName.Text	1. If the payment method is "DirectCredit", this element shall be populated
1.5.	BPay (tuple zero to one)	
1.5.1.	PaymentMechanism.BpayBiller.Code	1. If the payment method is "BPay", this element shall be populated

Deleted: T

Deleted: Tuple One Only

APPENDIX A – THE MESSAGE CONTENT TABLE EXPLAINED

This section defines the table structure that **must** be used to define the context, structure, and rules of the data elements contained within the XBRL instance document – referred to as the message content table.

There will be a message content table for each context within the message. The grouping of the data elements in accordance to the context aligns to how the data elements are built into the XBRL taxonomy and this consistent presentation will assist Software Developers.

The message content table uses the following rows and columns:

Context Type (row at top of table): This is the name of the XBRL Context Specification or Context Instance which has been defined early in the MIG document.

Sequence Number: This is a sequential number used to indicate the expected order of the data elements within the instance document and to describe the structure of tuples. Data elements within a tuple are allocated a multilevel number to indicate the expected structure and order of the data elements contained within the tuple. If there are nested tuples then the sequence number goes to next numbering level. The following is an extracts from a message content table which illustrates the sequence numbering and multileveling require to cater for tuples and nested tuples.

Seq No.	XBRL Fact
1.	PaymentMechanism (Tuple: zero to many)
1.1.	PaymentMechanism.PaymentMethod.Code
1.2.	PaymentMechanism.Instruction.Text
1.3.	DirectDebit (tuple zero to one)
1.3.1.	Payment Mechanism.Direct DebitAccount.Identifier
1.3.2.	Payment Mechanism.Direct Debit Name.Text
1.4.	DirectCredit (tuple zero to one)
1.4.1.	Payment Mechanism.Direct CreditAccount.Identifier
1.4.2.	Payment Mechanism.Direct CreditName.Text
1.4.3.	FinancialInstitutionAccount (Tuple One Only)
1.4.3.1.	FinancialInstitutionAccount.BankStateBranch.Number
1.4.3.2.	FinancialInstitutionAccount.FinancialInstitutionAccount.Number
1.4.3.3.	FinancialInstitutionAccount.FinancialInstitutionAccountName.Text
1.4.3.4.	FinancialInstitutionAccount.FinancialInstitutionBranchName.Text
1.4.3.5.	FinancialInstitutionAccount.FinancialInstitutionName.Text

XBRL Fact: This is the name of the data element to be reported. For example:

Identifiers.AustralianBusinessNumber.Identifier

Instructions / Rules: This column describes all the instructions / rules applicable to the data element. Each rule needs to be given a sequential number which links the rule to its implementation and message code. Rules would include information such as optionality, presentation criteria and the use of XML attributes such as IsVisible.

Rule Implementation: This column informs Software Developers how the rules specified in the Rules column will be provided.

NOTE: This column is only applicable for request messages and the column will not be present in the table for Response Messages.

There can only be the following options:

- XBRL – validation provided via the XBRL schemas and linkbases. Typically rules implemented via XBRL do not need to be specified within the MIG. Only those rules that are considered to provide necessary information to software developers should be defined within the MIG. An example of this is the rules associated with the domain values of a dimension within a context specification.
- Schematron ID – for rules that cannot be implemented using XBRL some agencies will provide a schematron implementation of the rule. When schematron is provided then the unique ID used to identify the rule within the schematron file must be provided within the MIG. The following is an example of how this should appear in the column : Schematron ID = VICMIG001
- MIG - There will be situations where rules will not be provided to Software Developer in a machine readable format and the description of the rule in the MIG is all that will be provided. In this situation the Software Developer has the choice of either implementing the rule as specified within the MIG or they rely on the agency to validate the data element (the expectation is that the Agency will always test for this rule)
- Agency – This rule cannot be implemented by the Software Developer and can only be executed by the agency.

SBR Message Code: All messages returned via the SBR channel will contain a code to uniquely identify the condition that has occurred.

NOTE: This column is only applicable for request messages and the column will not be present in the table for Response Messages.

In order to allow codes to be managed in a distributed fashion, codes will take the following format:

{Jurisdiction}.{Agency}.{Function}.{Id}

represented by the regular expression

([A-Z0-9])+.([A-Z0-9])+.([A-Z0-9])+.([A-Z0-9])+

Initially

Jurisdiction = SBR | CMN | QLD | NSW | ACT | VIC | SA | WA | NT | TAS

Agency = Jurisdiction specific agency code

For CMN (Commonwealth), = ATO, ASIC, APRA, ABS

For SBR = GEN (i.e. SBR wide codes)

For States = OSR of Offices of State Revenue

Function = Agency specific functional area or GEN for agency wide codes

For SBR = GEN or FAULT

Id = function specific identifier (format may vary across agencies).

Examples are shown below;

SBR.GEN.FAULT.TOOMANYINSTANCES

CMN.ATO.TFN.OK

QLD.OSR.PRL.000001

The above structure recognises and caters for the current situation where agency errors are unharmonised, and will need to be passed through to client software.

The expectation is that for each rule identified within the message content table to have a corresponding message code however depending on the rule implementation a message code may not be relevant in which case Not Applicable (N/A) should be inserted into the rules corresponding message code to make this clear to Software Developers. The follow table summaries what must be provided in the message code column in relation to the rules implementation choice.

Rule Implementation	Message Code
Schematron	Message Code needs to be provided against corresponding rule..
XBRL	Message Code not relevant – place N/A against corresponding rule.
MIG	Message Code needs to be provided against corresponding rule. The only exception is if the rule is associated to rendering instruction to the software developer.
Agency	Message Code needs to be provided against corresponding rule.

The expectation is that each agency will populate a message repository with all error, warning and information message that could be returned via the SBR channel. These message will be allocated an SBR message code using the above mentioned code format. The Software Developer would then use the SBR message code provided via the MIG and the message repository to obtain the full details associated with the message.