



An Australian Government Initiative
Standard Business Reporting

SBR

Standard Business Reporting

ASIC Forms 405 and 406 Message Implementation Guide

Program name: *Standard Business Reporting*

Date: 30/04/2015

Production release – suitable for use

 This document and its attachments are **Unclassified**



For further information or questions,
contact the SBR Service Desk at
SBRServiceDesk@sbr.gov.au or call
+61 1300 488 231. International callers
may use +61-2-6216 5577

VERSION CONTROL

Version	Release date	Description of changes
1.0	04/02/2010	Production release
1.1	22/04/2010	Updates to rules and SBR message codes as result of integration and conformance testing
1.2	30/06/2011	Update references for the IFRS AU Taxonomy; Update table in section 5.3.1.2; Update table in section 5.4.1.2.
1.3	30/04/2015	Update 'Attachments' section of MIG, and relevant parts of message specifications to include information about attach XBRL and iXBRL financial reports.

ENDORSEMENT

APPROVAL

Chief Solutions Architect
Solutions Integration
Standard Business Reporting
Manager
Systems & Online Services
ASIC

Copyright

© Commonwealth of Australia 2011

This work is copyright. Use of this Information and Material is subject to the terms and conditions in the "SBR Disclaimer and Conditions of Use" which is available at <http://www.sbr.gov.au>. You must ensure that you comply with those terms and conditions. In particular, those terms and conditions include disclaimers and limitations on the liability of the Commonwealth and an indemnity from you to the Commonwealth and its personnel, the SBR Agencies and their personnel.

You must include this copyright notice in all copies of this Information and Material which you create. If you modify, adapt or prepare derivative works of the Information and Material, the notice must still be included but you must add your own copyright statement to your modification, adaptation or derivative work which makes clear the nature of your modification, adaptation or derivative work and you must include an acknowledgement that the adaptation, modification or derivative work is based on Commonwealth owned Information and Material.

Table of contents

1	Introduction.....	5
1.1	Purpose.....	5
1.2	Audience and Scope	5
1.3	References.....	5
1.4	Change Management.....	6
2	General Instructions	7
2.1	Authorisation	7
2.2	Declarations	7
2.3	SBDH Variations	8
2.3.1	Business Documents.....	8
2.3.2	Attachments	8
2.3.3	Document Identifiers	8
2.3.4	Lodgment date and time interpretation	8
2.4	Response Messages.....	9
2.4.1	Messages described in the MIG	9
2.4.2	Messages not described in the MIG	9
2.4.3	Messages not described at all	9
3	Business Overview	10
3.1	Business Applicability Period.....	13
3.2	Report Version	13
4	XBRL Context Specifications	14
4.1	Context Specification - Reporting Party (RP).....	14
4.2	Context Specification - Reporting Party - Intermediary (INT)	15
4.3	Context Specification - Reporting Party – Local Agent (LAG)	16
5	ASIC form 405/406 Interaction Model	18
5.1	Prerequisites	18
5.2	Service Summary	18
5.3	Prefill Specifications	20
5.3.1	Prefill Request - Message	20
5.3.1.1	Discoverable Taxonomy Set References	20
5.3.1.1	Standard Business Document Header Content.....	20
5.3.1.2	Standard Business Document Body Content	21
5.3.2	Prefill Response - Message.....	22
5.3.2.1	Discoverable Taxonomy Set References	22
5.3.2.2	Standard Business Document Header Content.....	22
5.3.2.3	Standard Business Document Body Content	22
5.4	Prelodge Specifications.....	30
5.4.1	Prelodge Request - Message	30
5.4.1.1	Discoverable Taxonomy Set References	30
5.4.1.2	Standard Business Document Header Content.....	31
5.4.1.3	Standard Business Document Body Content	31
5.4.2	Prelodge Response - Message	31
5.4.2.1	Discoverable Taxonomy Set References	31
5.4.2.2	Standard Business Document Header Content.....	32
5.4.2.3	Standard Business Document Body Content	32
5.5	Lodge Specifications	33
5.5.1	Lodge Request - Message	33
5.5.1.1	Discoverable Taxonomy Set References	33
5.5.1.2	Standard Business Document Header Content.....	34
5.5.1.3	Standard Business Document Body Content	35
5.5.2	Lodge Response - Message.....	44
5.5.2.1	Discoverable Taxonomy Set References	44
5.5.2.2	Standard Business Document Header Content.....	44
5.5.2.3	Standard Business Document Body Content	44

Appendix A – The Message Content Table Explained	45
--	----

List of Figures

Figure 1 – ASIC Business Interaction Model.....	12
Figure 2 – ASIC 405/406 collaboration diagram.....	18

Terminology

For definition of the terminology and acronyms used within this document please refer to the glossary on the SBR website. Click here

<https://www.sbr.gov.au/content/public/help/glossary> to go to the glossary.

The key words “MUST”, “MUST NOT”, “REQUIRED”, “SHALL”, “SHALL NOT”, “SHOULD”, “SHOULD NOT”, “RECOMMENDED”, “MAY”, and “OPTIONAL” in this document are to be interpreted as described in RFC 2119 <http://www.ietf.org/rfc/rfc2119.txt>. The use of the word “Mandatory” is to be read as “MUST”.

DRAFT

1 INTRODUCTION

1.1 PURPOSE

The purpose of this document is to support software developers in the implementation of the SBR reporting service for the ASIC's Form 405 'Statement to verify the financial statements of a foreign company' and the Form 406 'Annual return of a foreign company'.

The Form 406 is lodged instead of the Form 405 when the foreign company has determined they are exempt from financial reporting requirements and contains the same form data as 405 but without the copies (attachments) of the financial statements.

1.2 AUDIENCE AND SCOPE

This document contains the necessary information required to support ASIC's Forms 405 and 406 lodgement implementation.

1.3 REFERENCES

Ref	Document Link	Document description
1)	The SBR Web Service Implementation Guide document can be downloaded at https://www.sbr.gov.au/content/myhome/softwaredevelopers/downloads/commoncomponents (requires login)	Technical interface data that is common to all business processes and messages that use the SBR channel: <ul style="list-style-type: none"> • Web service protocol specifications • Standard message header structure • Standard error codes • Authentication protocol and trust broker
2)	The SBR Taxonomy Architecture document can be downloaded at https://www.sbr.gov.au/content/myhome/softwaredevelopers/downloads/commoncomponents (requires login)	Reference document that describes the structure of the SBR taxonomy, its naming conventions, release management and change control, and how each business interaction fits within the architecture.
3)	The Software Developer Kit documentation can be accessed at https://www.sbr.gov.au/content/myhome/softwaredevelopers/sdkguide (requires login)	Reference information for software developers using the SBR software developer kit
4)	The SBR Taxonomy Architecture document can be downloaded at https://www.sbr.gov.au/content/myhome/softwaredevelopers/downloads/commoncomponents (requires login)	Reference information that describes the implementation of the ASIC common services.
5)	The 2011 IFRS AU Taxonomy Guide can be accessed at https://www.sbr.gov.au/content/myhome/softwaredevelopers/downloads/asic (requires login)	Reference information that includes description of the structure of the IFRS AU Taxonomy that must be used for Financial Statements and Reports (FINRPT), guidance on preparing the XBRL instance documents and the message implementation rules.

1.4 CHANGE MANAGEMENT

If a material change is required to the ASIC 405 & 406 Message Implementation Guide the document will be re-released. The Taxonomy Approval Committee must approve any change.

DRAFT

2 GENERAL INSTRUCTIONS

This section provides instructions that are relevant across all collaborations and messages specified within this MIG.

2.1 AUTHORISATION

SBR services available for form 405/406 can be used by the business users and Intermediaries (i.e. Local Agents).

There is a trust relationship between ASIC and SBR Core Services in terms of user authentication. If a message reaches ASIC, it is assumed that SBR authentication has been successful.

All 405 or 406 'request' messages will be checked and ASIC will validate against its records that the sender is authorised to perform the requested action for the reporting party (disclosing entity).

ASIC will perform the business level authorisation comparing the ABN in the Auskey credential and the other ASIC identifiers (i.e. ARBN) contained in the business document against ASIC records.

Lodging Party Type	Rules and Validations
Business associates and business users	<ol style="list-style-type: none"> 1. The entity is a foreign company registered with ASIC and have a valid identifier ARBN in ASIC register 2. The ABN and the ARBN must belong to same entity, as per records in ASIC system.
Local Agent	<ol style="list-style-type: none"> 1. The ABN of the Local Agent must exist in ASIC system 2. The local agent is appointed to lodge on behalf of the business (reporting party).

The validations and the implementation of the above business rules are described in the section XBRL Context Specifications.

2.2 DECLARATIONS

The form 405/406 requires three declarations from the reporting party indicating that:

1. The information contained in the form is true and correct
2. The form is submitted under the terms and conditions of ASIC Electronic Lodgement Protocol
3. The attached documents are a true copies of the original reports required to be lodged

The declarations are required to accompany each lodgment and the lodger must have displayed to them:

- ✓ specific statements describing what they are about to declare. The text is supplied in the section Lodge specification – Message Content Table - rules/instructions for the Declaration tuple
- ✓ an acknowledgement that the declaration is being made by signing the statements in a particular way.

The sender signs by actively confirming what constitute their "signature" using a "tick box", "radio button", a "submit button" or any similar method.

2.3 SBDH VARIATIONS

The WIG describes the SBDH content in detail. Described in this section are only variations from what is defined in the WIG.

2.3.1 Business Documents

A maximum of two business documents in the SBDB per message will be accepted for form 405 messages – one for the report data and one for the XBRL financial reports. The rules regarding the number of business documents will be described in each message specification.

2.3.2 Attachments

Some interactions may or must be accompanied by PDF, XML or XHTML attachments. The rules will be covered in each message specification.

2.3.3 Document Identifiers

The *sbdm:BusinessDocument.GovernmentGeneratedIdentifier.Text* field will be populated by ASIC in the Lodge response message to provide the business software a unique identification for a lodgment received by ASIC. The field must be used for querying on a lodgment status.

The value for the *sbdm:BusinessDocument.BusinessGeneratedIdentifier.Text* field in the SBDH must be unique for each message.

ASIC will use the value of *sbdm:BusinessDocument.BusinessGeneratedIdentifier.Text* for checking and identifying the duplicate transactions for the message type Lodge request.

There could be occasions when business software may not receive the Lodge Response message due to a number of failure modes (e.g. loss of internet connectivity) for which the logical action by business software should be to resubmit the request. The resubmitted request must use the same value for the *sbdm:BusinessDocument.BusinessGeneratedIdentifier.Text* as the initial failed request. One of the following two scenarios may occur:

- If the initial report lodged with the same business generated identifier and for the same reporting party and same period is fully processed then error CMN.ASIC.GEN.0000065 is returned.
- If the initial report was not processed by ASIC system then the interaction will follow the Lodge interaction pattern and the business software will receive a Lodge response message.

2.3.4 Lodgment date and time interpretation

The SBDH contains a lodgment receipt date and time. This is contained in the element *Lodgement.Receipt.Datetime*, is in *xs:dateTime* format and will be provided in UTC time (not local).

The List Lodgment Status interaction will return a date and time for when the form was lodged and fully processed by ASIC system.

As the *xs:dateTime* format requires a time, a default 00:00:00 time will be assigned to the lodgment receipt. It should also be noted that conversion of *Lodgement.Receipt.Datetime* to

local time **must** occur before displaying the date. Failure to perform this conversion could lead to an incorrect date being displayed to the user.

For the other Form 405 or 406 interactions (Prefill, Prelodge and Lodge) this element will not be provided.

2.4 RESPONSE MESSAGES

2.4.1 Messages described in the MIG

Where business rules associated with data elements could be reasonably implemented by a Software Developer they have been described in the business content tables below along with an associated response message code.

2.4.2 Messages not described in the MIG

Some business rules are implemented within the ASIC core processing systems but are not practical to be implemented elsewhere as they refer to business data held within the ASIC. These messages are listed in the SBR Response Message Repository only.

Examples of these messages follow:

Message Event Item	Value
Message.Event.Item.Error.Code	CMN.ASIC.405.0000018
Message.Event.Item.Severity.Code	Error
Message.Event.Item.Short.Description	Country code must be provided
Message.Event.Item.Detailed.Description	Country code must be provided

2.4.3 Messages not described at all

There may be limited messages produced by ASIC core processing systems that have not been documented. They will be returned in the format as described above.

3 BUSINESS OVERVIEW

This section includes a brief summary for the SBR Form **405 Statement to verify financial statements of a foreign company** and **406 Annual return for a foreign company** service interactions overview, which represents the key actors and information flows (interactions) that exist between the stakeholders.

The *Corporations Act 2001* requires a registered foreign company to lodge with ASIC, at least once every calendar year either:

- Form 405 *Statement to verify financial statements of a foreign company* (where the company was registered in New Zealand this document may be lodged with the New Zealand Companies Office)

OR

- Form 406 *Annual return of a foreign company*

The Form 406 is lodged instead of the Form 405 when the foreign company has determined they are exempt from financial reporting requirements under s601CK(7) of the Corporations Act 2001.

There are two reasons that a foreign company may be exempt from lodging accounts with ASIC:

1. If the foreign company determines they are exempt from these financial reporting requirements under s601CK(7) of the Act, it may lodge a Form 406 *Annual return of a foreign company*, instead of the Form 405.
2. The company was originally registered in New Zealand and has lodged accounts with the New Zealand Companies Office (NZCO). Special arrangements apply in relation to forms lodged from New Zealand Companies Office. Essentially the foreign company will be lodging accounts with NZCO and these accounts are then transferred by NZCO to ASIC.

On submission of the Form 405 or 406, ASIC will validate the document against the legislative requirements and the internal policy and procedure. The document will only be processed once all mandatory information is received.

Form 405

The Form 405 lodgement consists of the following components:

- The proforma 405
- Profit and loss statement for the year (also referred to as Income Statement)
- Balance sheet as at the end of the year (also referred to as Statement of Financial Position)
- Statement of cash flows for the year
- Any such documents as the company is required to prepare by law for the time being applicable for that company in its place of origin

The client's legal obligation is met upon receipt of a complete Form 405 and required attachments.

The *Corporations Act 2001* requires a registered foreign company to lodge a form 405 or a form 406 with ASIC at least once every calendar year and at intervals of not more than 15 months. In general the form is lodged 3-4 months after the end of a financial year as the company needs time to prepare the accounts.

The proforma 405 and 406 must supply details of the company's particulars for their registered office addresses both in Australia and in its place of origin, details for its directors and details for its local agent. It also indicates if there have been changes to some of the above mentioned information.

Form 406

The Form 406 is lodged instead of the Form 405 when the foreign company has determined they are exempt from financial reporting requirements under s601CK(7) of the Corporations Act 2001.

Section 601CK(9) of the *Corporations Act 2001* advises the lodgement period for the Form 406 with ASIC is once every calendar year. In general the form is lodged evenly throughout the year.

The Form 406 lodgement consists of only one component - the proforma 406.

The client's legal obligation is met upon receipt of a complete Form 406.

The proforma 406 must contain same information as the proforma 405.

DRAFT

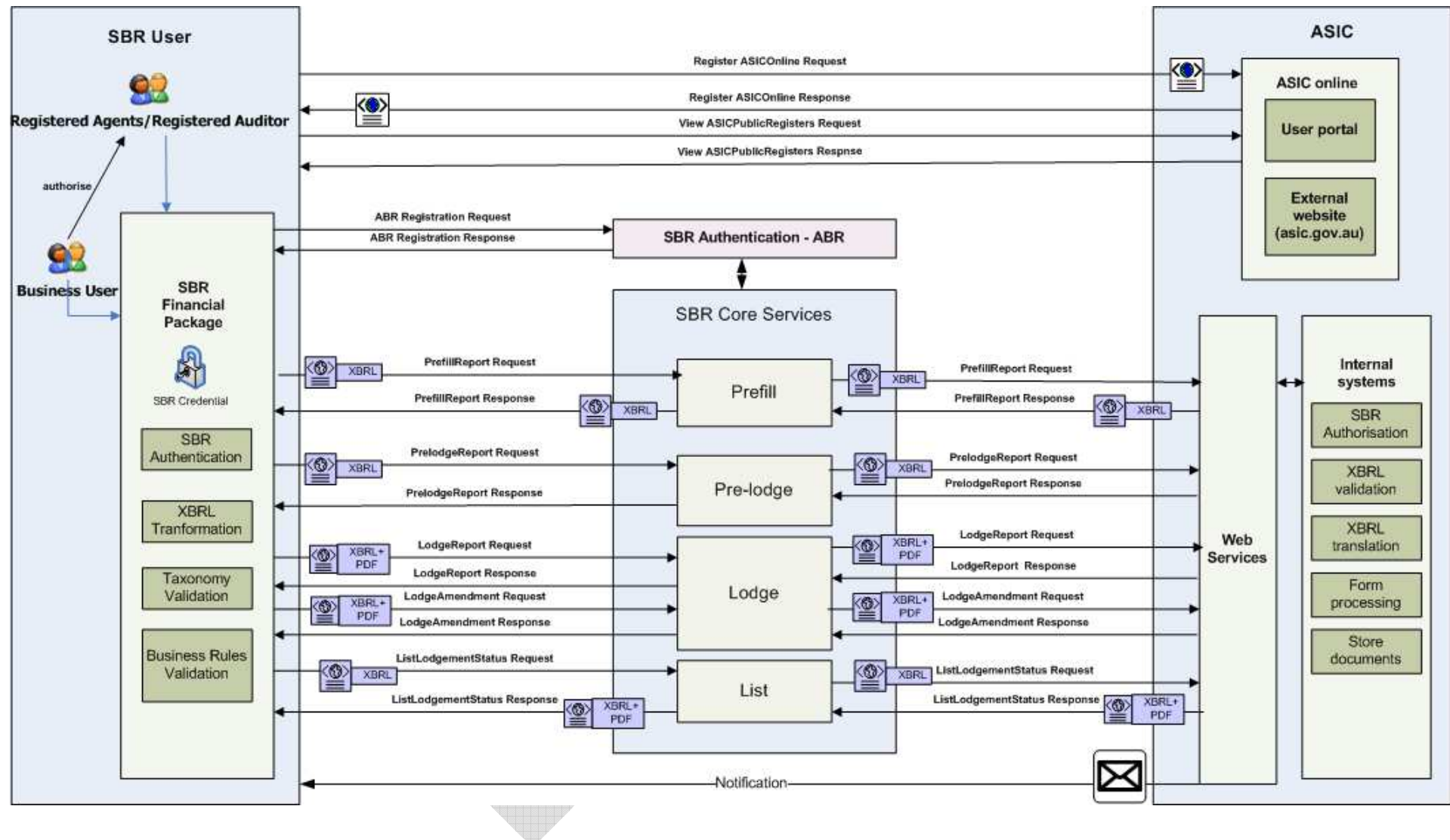


Figure 1 – ASIC Business Interaction Model

3.1 BUSINESS APPLICABILITY PERIOD

The lodgment for Form 405 and 406 always requires the latest reporting schema to be used regardless of the period that the data relates to. If ASIC requires changes to the information being reported and makes changes to the form 405 or 406, the new schema will supersede the old one immediately.

For example, if 'Statement to verify the financial statements of a foreign company' were to be reported in 2011 for the financial years 2006, 2007, 2008, 2009 Software developers would use the latest f405/f406 schema in 2011 for all reports.

3.2 REPORT VERSION

The current report version is **f405.0001.02.00**.

DRAFT

4 XBRL CONTEXT SPECIFICATIONS

The following sections define the context specifications that will be used within this MIG. The context types are allocated to the individual data elements within the message specifications below.

4.1 CONTEXT SPECIFICATION - REPORTING PARTY (RP)

This context type defines the reporting party (i.e. the primary entity to which the report directly relates), with a Period Type of Duration (Start and End Dates). Data elements that are reported under this context will use the context label of RP.

XBRL Instance Context Data Concept	Requirement	Instructions/Rules	Rule Imp	SBR Msg code
Context Identifier	Mandatory	This is a unique identifier used to link the data element to a defined XBRL context. SBR is recommending a four character id starting with 'C' and a three digit sequential number for each context eg C001 1. Must be a valid value	1. XBRL	1. N/A
Entity Identifier	Mandatory	This field must be set to ARBN that the business document instance relates to. 1. Must be a valid ARBN nine digits long 2. ARBN must be a valid value that exists in ASIC systems 3. The ABN provided in the SAML and the ARBN must belong to same entity 4. The ABN must exist in ASIC system	1. XBRL 2. Agency 3. Agency 4. Agency	1. N/A 2. CMN.ASIC.GEN.0000048 3. CMN.ASIC.GEN.0000048 4. CMN.ASIC.GEN.0000048
Entity Identifier Scheme	Mandatory	This field must be set to the URL of the agency followed by the relevant identifier acronym - http://www.asic.gov.au/ARBN	1. Agency	1. CMN.ASIC.GEN.0000052
Entity Segment	Mandatory	1. Explicit member dimension ReportPartyType must be set to "RprtPyType.02.03:ReportingParty" 2. Mandatory only one context can have this segment value	1. Schematron 2. Schematron	1. CMN.ASIC.GEN.0000083 2. CMN.ASIC.405.0000004
Period Date - Start Date	Mandatory	The start date relevant to the report 1. Must be a valid date before the date of lodgement	1. Agency	1. CMN.ASIC.GEN.0000084
Period Date	Mandatory	The end date relevant to the report	1. Agency	1. CMN.ASIC.GEN.0000084

XBRL Instance Context Data Concept	Requirement	Instructions/Rules	Rule Imp	SBR Msg code
- End Date		1. Must be a valid date before the date of lodgement		

4.2 CONTEXT SPECIFICATION - REPORTING PARTY - INTERMEDIARY (INT)

This context type defines the intermediary party. Data elements that are reported under this context will use the context label of INT.

XBRL Instance Context Data Concept	Requirement	Instructions/Rules	Rule Imp	SBR Msg code
Context Identifier	Mandatory	This is a unique identifier used to link the data element to a defined XBRL context. SBR is recommending a four character id starting with 'C' and a three digit sequential number for each context eg C001 1. Must be a valid value	1. XBRL	1. N/A
Entity Identifier	Mandatory	This field must be set to the ABN of the Local Agent 1. The ABN must exist in ASIC systems and be appointed to the entity specified in the 'ReportingParty' context	1. Agency	1. CMN.ASIC.GEN.000048
Entity Identifier Scheme	Mandatory	This field must be set to the URL of the agency followed by the relevant identifier acronym for example: http://www.abr.gov.au/ABN	1. Agency	1. CMN.ASIC.GEN.000050
Entity Segment	Mandatory	1. Explicit member dimension ReportPartyType must be set to "RprtPyType.02.03:Intermediary"	1. MIG	1. CMN.ASIC.GEN.000083
Period Date - Start Date	Mandatory	The start date relevant to the report 1. Must be a valid date before the date of lodgement 2. Period start date should be same as for context RP	1. Agency 2. N/A	1. CMN.ASIC.GEN.000084 2. N/A
Period Date	Mandatory	The end date relevant to the report	1. Agency	1. CMN.ASIC.GEN.000084

XBRL Instance Context Data Concept	Requirement	Instructions/Rules	Rule Imp	SBR Msg code
- End Date		1. Must be a valid date before the date of lodgment 2. Should be same as period end date in context RP	2. N/A	2. N/A

4.3 CONTEXT SPECIFICATION - REPORTING PARTY – LOCAL AGENT (LAG)

This context type defines the role of Local Agent for the foreign entity described in the Reporting Party context. Data elements that are reported under this context will use the context label of LAG.

XBRL Instance Context Data Concept	Requirement	Instructions/Rules	Rule Imp	SBR Msg code
Context Identifier	Mandatory	This is a unique identifier used to link the data element to a defined XBRL context. SBR is recommending a four character id starting with 'C' and a three digit sequential number for each context eg C001 1. Must be a valid value	1. XBRL	1. N/A
Entity Identifier	Mandatory	This field must be set to the value of the ASIC Identifier returned by the Prefill Response message (nine digits long)	1. Agency	1. CMN.ASIC.405.0000064
Entity Identifier Scheme	Mandatory	This field must be set to the URL of the agency followed by the relevant identifier acronym: http://www.asic.gov.au/LocalAgent	1. Agency	1. CMN.ASIC.405.0000054
Entity Segment	Mandatory	1. Explicit member dimension ReportPartyType must be set to "RprtPyType.02.03:LocalAgent"	1. MIG	1. CMN.ASIC.GEN.0000083
Period Date - Start Date	Mandatory	The start date relevant to the report 1. Must be a valid date before the date of lodgment	1. Agency 2. N/A	1. CMN.ASIC.GEN.0000084 2. N/A

XBRL Instance Context Data Concept	Requirement	Instructions/Rules	Rule Imp	SBR Msg code
		2. Period start date should be same as for context RP		
Period Date - End Date	Mandatory	The end date relevant to the report 1. Must be a valid date before the date of lodgment 2. Should be same as period end date in context RP	1. Agency 2. N/A	1. CMN.ASIC.GEN.0000084 2. N/A

DRAFT

5 ASIC FORM 405/406 INTERACTION MODEL

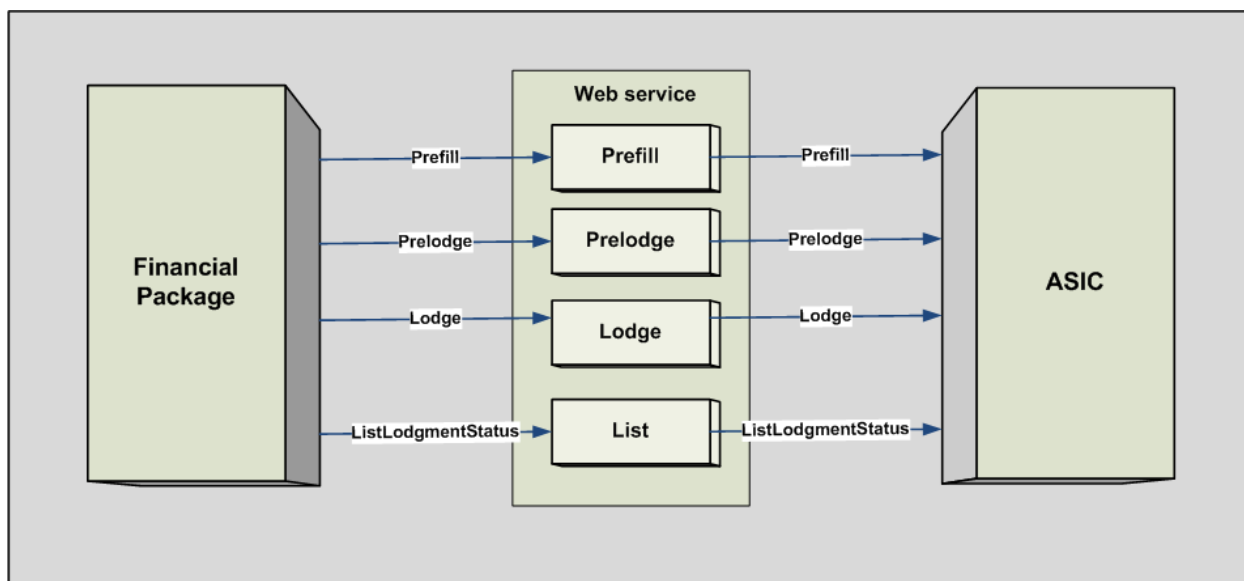


Figure 2 – ASIC 405/406 collaboration diagram

5.1 PREREQUISITES

Before using SBR channel for transacting with ASIC, the following conditions must be met:

- The Business or the Intermediary must obtain an SBR credential
- The Business or the Intermediary must have an SBR enabled financial package
- The Intermediary must be appointed as a Local Agent of the foreign company and their ABN must be recorded in ASIC systems

5.2 SERVICE SUMMARY

The workflow defined above represents the abstract process model for the 405 'Statement to verify the financial statements of a foreign company'. The following defines the sequence, optionality and repeatability of the service execution. Where a service is identified as 'Mandatory' then the Software Developer has to implement this service in order to complete the transaction.

Optional services like List must still be developed because it provides information to the business regarding their lodgment status as the service needs to be executed by the business.

Repeatability indicates if the service can execute the service more than once – 'Yes' meaning that a service can be executed multiple times within the sequence.

The services will work optimally if implemented in the order described below.

	Service Name	Mandatory	Repeatability
1	Prefill ASIC 405/406 Request - Request details as current in ASIC records relevant for	Yes	Yes

	Service Name	Mandatory	Repeatability
	<p>the specified report.</p> <p>Response - Returns details pertaining to the specified report, as current in ASIC records.</p>		
2	<p>Preldodge ASIC 405/406</p> <p>Request - Request to validate completed report against ASIC specific back-end data, business rules and taxonomy schema. This includes syntactical errors and the user authorisation.</p> <p>Response - Return errors encountered during the validation or a success message.</p>	Yes	Yes
3	<p>Lodge ASIC 405/406</p> <p>This service is used for lodging a report 405/406.</p> <p>Lodge Request – Form 405/406 lodgment via SBR to ASIC must include:</p> <ul style="list-style-type: none"> - Coversheet Form 405/406 – XBRL instance - PDF of the financial statements for form 405 only - XBRL of the financial statements for form 405 only (optional) - iXBRL of the financial statements for form 405 only (optional) <p>Lodge Response - User receives response message to indicate that ASIC has received the lodgment including an agency generated reference number that can be used to enquire the status of lodgment (see List Lodgment Status service). Alternatively, the response message will return the errors found, indicating that the report has not been accepted</p>	Yes	No*
4	<p>List</p> <p>The List service is used for updating user with information regarding the status of a SBR lodgment (ListLodgmentStatus) for an ASIC report and it must be invoked after a successful lodgment response has been received.</p> <p>The List service is a common service which is not form specific and it requires only one implementation irrespective of the number of ASIC reports being implemented.</p> <p>a) ListLodgmentStatus</p> <p>Request – Enquiry about the status details for a report submitted to and accepted by ASIC using the SBR channel, quoting the reference number received in the Response Lodge.</p> <p>Response - Returns the status of a lodgment. If successfully processed, it will include one or two PDF documents: ASIC rendered form and the Payment Advice.</p> <p>This service is common across a number of ASIC collaborations and has been specified within the ASIC Common Services Message Implementation Guide.</p>	No	Yes

*The Lodge can be repeated only if the initial lodgment has been unsuccessful (e.g. no response, the response returns errors and informs that lodgment is rejected) - refer to section 2.3.3 Document Identifiers.

5.3 PREFILL SPECIFICATIONS

Interaction Name	Prefill
Description	Request and obtain information held by ASIC that facilitates entering data on the form.
Stakeholders	ASIC, companies, officeholders, registered agents, responsible entities for schemes and auditors. Software developers and SBR Core
Pre-conditions	Same as in the section 5.1 <i>Prerequisites</i>
Post-conditions	Success condition: Pre-filled response is returned with appropriate data. Fail condition: User not authorised to request pre-fill data for this entity
Initiating party	Business, Intermediary
Channel	SBR
Core Service Map	Prefill

5.3.1 Prefill Request - Message

5.3.1.1 Discoverable Taxonomy Set References

Schema	f405.0001.prefill.request.02.00.report.xsd
Linkbases	f405.0001.prefill.request.02.00.defLink.xml
	f405.0001.prefill.request.02.00.labLinkInfoCls.xml
	f405.0001.prefill.request.02.00.presLink.xml
	f405.0001.prefill.request.02.00.refLink.xml
Schematron	schematron_405_prefill_2.0.xml

5.3.1.1 Standard Business Document Header Content

The WIG provides the specification of the SBDH. The following table specifies the message specific data element values or any variations to the WIG.

Attribute Name	Instructions / Rules	Rule Imp	SBR Msg code
sbdm:Message.Type.Text	1. Mandatory - Value must be "f405.0001.prefill.request" or "f406.0001.prefill.request"	1. MIG	1. SBR.GEN.GEN.4

5.3.1.2 Standard Business Document Body Content

The following describes the facts and context required to be supplied within the XBRL instance document populated into the SBDB element BusinessDocument.instance.text

5.3.1.2.1 Prefill Request XBRL Context

Context Spec	Hypercube Name	Associated Segment Dimensions	Instructions / Rules	Rule Imp	SBR Msg code
RP	f405.0001.prv.02.00:ReportingParty	ReportPartyType	1. Mandatory only one	1. SchematronID= CMN.ASIC.GEN.0000067	1. CMN.ASIC.GEN.0000067
INT	f405.0001.prv.02.00:Intermediary	ReportPartyType	1. Optional only one	1. SchematronID= CMN.ASIC.GEN.0000068	1. CMN.ASIC.GEN.0000068

5.3.1.2.2 Prefill Request Message Content Table

The following table contains the facts required in the instance document.

Context RP				
Seq No.	XBRL Fact	Instructions / Rules	Rule Imp.	SBR Msg Code
1	Report.Type.Code	1. Mandatory - value must be "f405" or 'f406'	1Agency	1. CMN.ASIC.GEN.0000093

Context INT				
Seq No.	XBRL Fact	Instructions / Rules	Rule Imp.	SBR Msg Code
1	Report.Submission.Date	1. Mandatory	1. Agency	1. CMN.ASIC.GEN.0000071

5.3.2 Prefill Response - Message

5.3.2.1 Discoverable Taxonomy Set References

Schema	f405.0001.prefill.response.02.00.report.xsd
Linkbases	f405.0001.prefill.response.02.00.defLink.xml
	f405.0001.prefill.response.02.00.labLinkInfoCls.xml
	f405.0001.prefill.response.02.00.presLink.xml
	f405.0001.prefill.response.02.00.refLink.xml

5.3.2.2 Standard Business Document Header Content

The WIG provides the specification of the SBDH. The following table specifies the message specific data element values or any variations to the WIG.

Attribute Name	Instructions / Rules
sbdm:Message.Type.Text	1. Mandatory - Value will be "f405.0001.prefill.response" or "f406.0001.prefill.response"

5.3.2.3 Standard Business Document Body Content

The following describes the facts and context required to be supplied within the XBRL instance document populated into the SBDB element BusinessDocument.Instance.Text

5.3.2.3.1 Prefill Response XBRL Context

Context Spec	Hypercube Name	Associated Segment Dimensions	Instructions / Rules
RP	f405.0001.prv.02.00:ReportingParty f405.0001.prv.02.00:ReportingPartyLocalAgentIntermediary f405.0001.prv.02.00:ReportingPartyLocalAgent	ReportPartyType	1. Mandatory only one
LAG	f405.0001.prv.02.00:LocalAgent f405.0001.prv.02.00:ReportingPartyLocalAgent f405.0001.prv.02.00:ReportingPartyLocalAgentIntermediary	ReportPartyType	1. Optional zero to many context of LAG type (the number of context type LAG will be equal with the number of Local Agent appointed to the reporting party)
INT	f405.0001.prv.02.00:ReportingPartyLocalAgentIntermediary	ReportPartyType	1. Optional only one

5.3.2.3.2 Prefill Response Message Content Table

The following table contains the facts required in the instance document.

Context RP		
Seq No.	XBRL Fact	Instructions / Rules
1	OrganisationName (Tuple)	1. Mandatory one
1.1	OrganisationNameDetails.OrganisationNameType.Code	1. Mandatory 2. Non-editable field
1.2	OrganisationNameDetails.OrganisationName.Text	1. Mandatory 2. Non-editable field

2	OrganisationDetails.PlaceOfIncorporation.Text	1. Optional 2. Non-editable field
3	OrganisationDetails.AnnualGeneralMeeting.Date	1. Optional
4	AddressDetails (Tuple)	1. Mandatory two
4.1	AddressDetails.OverseasAddress.Indicator	1. Optional
4.2	AddressDetails.Currency.Code	1. Mandatory
4.3	AddressDetails.AttentionTo.Text	1. Optional
4.4	AddressDetails.Line1.Text	1. Mandatory
4.5	AddressDetails.Line2.Text	1. Optional
4.6	AddressDetails.Line3.Text	1. Optional
4.7	AddressDetails.Line4.Text	1. Optional
4.8	AddressDetails.LocalityName.Text	1. Optional
4.9	AddressDetails.Postcode.Text	1. Optional
4.10	AddressDetails.StateOrTerritory.Code	1. Optional
4.11	AddressDetails.Country.Code	1. Mandatory
4.12	AddressDetails.OccupyPremises.Indicator	1. Optional
4.13	AddressDetails.RegisteredOfficeOccupiersConsent.Indicator	1. Optional
4.14	AddressDetails.Start.Date	1. Optional
5	Officeholder (Tuple)	1. Mandatory, one or many
5.1	Identifiers.AustralianRegisteredBodyNumber.Identifier	1. Optional – will be provided when the officeholder is an organization

5.2	Identifiers.AustralianBusinessNumber.Identifier	1. Optional
5.3	OrganisationName (Tuple)	1. Optional only one
5.3.1	OrganisationNameDetails.OrganisationNameType.Code	1. Mandatory
5.3.2	OrganisationNameDetails.OrganisationName.Text	1. Mandatory
5.4	Party.ChangeName.Indicator	1. Optional
5.5	PersonNameDetail (Tuple)	1. Optional only one
5.5.1	PersonNameDetails.FamilyName.Text	1. Mandatory
5.5.2	PersonNameDetails.GivenName.Text	1. Mandatory
5.5.3	PersonNameDetails.OtherGivenName.Text	1. Optional
5.5.4	PersonNameDetails.Position.Text	1. Optional
5.6	PersonNameDetails.NameStart.Date	1. Optional
5.7	OrganisationControl.OfficeholderCessation.Indicator	1. Optional
5.8	OrganisationControl.RoleCease.Date	1. Optional
5.9	OrganisationControl.DirectorAppointment.Indicator	1. Optional
5.10	Organisation Control. RoleStart.Date	1. Optional
5.11	PersonDemographicDetails.Birth.Date	1. Optional
5.12	PersonDemographicDetails.BirthLocalityName.Text	1. Optional
5.13	PersonDemographicDetails.BirthStateOrTerritory.Code	1. Optional
5.14	PersonDemographicDetails.BirthCountry.Code	1. Optional

5.16	AddressDetails (Tuple)	1. Optional
5.16.1	AddressDetails.OverseasAddress.Indicator	1. Optional
5.16.2	AddressDetails.Currency.Code	1. Optional
5.16.3	AddressDetails.AttentionTo.Text	1. Optional
5.16.4	AddressDetails.Line1. Text	1. Optional
5.16..5	AddressDetails.Line2.Text	1. Optional
5.16.6	AddressDetails.Line3.Text	1. Optional
5.16.7	AddressDetails.Line4.Text	1. Optional
5.16.8	AddressDetails.Locality Name.Text	1. Optional
5.16.9	AddressDetails.Postcode.Text	1. Optional
5.16.10	AddressDetails.StateOrTerritory.Code	1. Optional
5.16.11	AddressDetails.Country.Code	1. Optional
5.16.12	AddressDetails.OccupyPremises.Indicator	1. Optional
5.16.13	AddressDetails.RegisteredOfficeOccupiersConsent.Indicator	1. Optional
5.16.14	AddressDetails.Start.Date	1. Optional
6	Declaration (Tuple)	1. Mandatory two tuples
6.1	Declaration.StatementType.Code	1. Mandatory - values will be: <ul style="list-style-type: none"> • 'ELP' • 'TrueAndCorrect'
6.2	Declaration.StatementAccepted.Indicator	1. Mandatory – set to 'true' for both tuples
6.3	Declaration.Signature.Date	1. Optional

6.4	Declaration.Signatory Identifier.Text	1. Optional
7	RegulatoryDisclosures.ClassOrderRelianceADI.Indicator	1. Optional
8	RegulatoryDisclosures.ClassOrderRelianceNonADI.Indicator	1. Optional

Context LAG		
Seq No.	XBRL Fact	Instructions / Rules
1	OrganisationName (Tuple)	1.Optional only one
1.1	OrganisationNameDetails.OrganisationNameType.Code	1. Mandatory
1.2	OrganisationNameDetails.OrganisationName.Text	1. Mandatory
2	Identifiers.AustralianCompanyNumber.Identifier	1. Optional
3	Identifiers.AustralianBusinessNumber.Identifier	1. Optional
4	PersonNameDetail (Tuple)	1.Optional only one
4.1	PersonNameDetails.FamilyName.Text	1. Mandatory
4.2	PersonNameDetails.GivenName.Text	1. Mandatory
4.3	PersonNameDetails.OtherGivenName.Text	1. Optional
4.4	PersonNameDetails.Position.Text	1. Optional
5	PersonNameDetails.NameStart.Date	1. Optional
6	Party.ChangeName.Indicator	1. Optional
7	OrganisationDetails.LocalAgentCessation.Indicator	1. Optional

8	OrganisationControl.RoleCease.Date	1. Optional
9	AddressDetails (Tuple)	1. Optional
9.1	AddressDetails.OverseasAddress.Indicator	1. Optional
9.2	AddressDetails.Currency.Code	1. Optional
9.3	AddressDetails.AttentionTo.Text	1. Optional
9.4	AddressDetails.Line1.Text	1. Mandatory
9.5	AddressDetails.Line2.Text	1. Optional
9.6	AddressDetails.Line3.Text	1. Optional
9.7	AddressDetails.Line4.Text	1. Optional
9.8	AddressDetails.LocalityName.Text	1. Optional
9.9	AddressDetails.Postcode.Text	1. Optional
9.10	AddressDetails.StateOrTerritory.Code	1. Optional
9.11	AddressDetails.Country.Code	1. Optional
9.12	AddressDetails.OccupyPremises.Indicator	1. Optional
9.13	AddressDetails.RegisteredOfficeOccupiersConsent.Indicator	1. Optional
9.14	AddressDetails.Start.Date	1. Optional

Context INT		
Seq No.	XBRL Fact	Instructions / Rules

1	OrganisationName (Tuple)	1. Optional only one
1.1	OrganisationNameDetails.OrganisationNameType.Code	1. Mandatory 2. Non-editable field
1.2	OrganisationNameDetails.OrganisationName.Text	1. Mandatory 2. Non-editable field
2	PersonNameDetails (Tuple)	1. Optional only one
2.1	PersonNameDetails.FamilyName.Text	1. Mandatory 2. Non-editable field
2.2	PersonNameDetails.GivenName.Text	1. Mandatory 2. Non-editable field
2.3	PersonNameDetails.OtherGivenName.Text	1. Optional 2. Non-editable field
2.4	PersonNameDetails.Position.Text	1. Optional 2. Non-editable field

DRAFT

5.4 PRELODGE SPECIFICATIONS

Interaction Name	Prelodge
Description	<p>Allows a business or intermediary to validate a completed report prior to submission.</p> <p>This service executes:</p> <ul style="list-style-type: none"> - Validation of report data against ASIC specific business rules and back-end data, and - XBRL validation for the report instance document, and - XBRL validation for the financial reports (FINRPT) instance document, or - iXBRL validation for the financial reports (FINRPT) instance document <p>No validation is performed for the PDF, if applicable attachments and no pdf attachments are expected for this interaction.</p> <p>The pre-lodge service can be used as many times as required to validate the report prior to submission.</p>
Stakeholders	ASIC, companies, officeholders, registered agents, responsible entities for schemes and auditors. Software developers and SBR Core
Pre-conditions	Same as in the section 5.1 <i>Prerequisites</i> Prefill service successfully executed
Post-conditions	<p>Success condition: Return the list of errors found on the report, allowing the user to determine exactly where the errors occurred. If no errors are found, message will return an 'information' event.</p> <p>Fail condition: User is not authorised to submit this report on behalf of the business</p>
Initiating party	Business, Intermediary
Channel	SBR
Core Service Map	Prelodge

5.4.1 Prelodge Request - Message

5.4.1.1 Discoverable Taxonomy Set References

Schema	f405.0001.prelodge.request.02.00.report.xsd
Linkbases	f405.0001.prelodge.request.02.00.defLink.xml
	f405.0001.prelodge.request.02.00.labLinkInfoCls.xml
	f405.0001.prelodge.request.02.00.presLink.xml
	f405.0001.prelodge.request.02.00.refLink.xml
Schematron	schematron_405_prelodge_2.0.xml

5.4.1.2 Standard Business Document Header Content

The WIG provides the specification of the SBDH. The following table specifies the message specific data element values or any variations to the WIG.

Attribute Name	Instructions / Rules	Rule Imp	SBR Msg code
sbdm:Message.Type.Text	1. Mandatory - Value must be "f405.0001.prelodge.request" or "f406.0001.prelodge.request"	1. MIG	1. SBR.GEN.GEN.4
Business Documents -> Business Document	1. Mandatory one business document for the f405 or f406 report 2. Optional a second business document for the XBRL or iXBRL Financial Reports (f405 only) 3. Maximum two XBRL or iXBRL instances are allowed	1. MIG 2. MIG 3. SBR Core Services	1. CMN.ASIC.GEN.0000028 2. CMN.ASIC.GEN.0000060 3. SOAP Fault - sbr:SBR.GEN.FAULT.TOOMANYINSTANCES"
Attachments -> Attachment	1. Optional with a maximum of 5 attachment files	1. SBR Core Services	1. SOAP Fault - sbr:SBR.GEN.FAULT.TOOMANYATTACHMENTS"
Message.Attachment.Filename.Text	1. Optional 2. Type of attachments is PDF, XML or XHTMLOnly 3. Content of the attachment must be valid PDF, XML or XHTML	1. N/A 2. MIG 3. MIG	1. N/A 2. CMN.ASIC.GEN.0000014 3. CMN.ASIC.GEN.0000015
Message.Attachment.Description.Text	1. Mandatory	1. MIG	1. CMN.ASIC.GEN.0000062

5.4.1.3 Standard Business Document Body Content

The content and validation rules are identical with the rules for the Lodge Request message – see section **Error! Reference source not found.**

5.4.1.3.1 Prelodge Request XBRL Context

XBRL Context will be identical with the Lodge Request message – see section 5.5 Lodge Specifications.

5.4.1.3.2 Prelodge Request Message Content Table

The facts are identical with the facts in the Lodge Request message – see section 5.5 Lodge Specifications.

5.4.2 Prelodge Response - Message

The Prelodge response message has no XBRL payload and ASIC will acknowledge the receipt of the lodge message using the MessageEvent in the SBDH.

5.4.2.1 Discoverable Taxonomy Set References

The response message has no XBRL payload so no DTS developed for this message. All relevant content will be contained within the SBDH.

5.4.2.2 Standard Business Document Header Content

Only rules specific to this message are listed in the table below.

Attribute Name	Instructions / Rules
sbdm:Message.Type.Text	1. Mandatory - Value will be "f405.0001.prelodge.response" or "f406.0001.prelodge.response"

5.4.2.3 Standard Business Document Body Content

The following describes the facts and context required to be supplied within the XBRL instance document populated into the SBDB element BusinessDocument.instance.text

DRAFT

5.4.2.3.1 Prelodge Response XBRL Context

The Prelodge Response message has no XBRL payload. The list of errors and warnings will be returned in the SBDH.

5.4.2.3.2 Prelodge Response Message Content Table

The prelodge response message has no XBRL payload.

5.5 LODGE SPECIFICATIONS

Interaction Name	Lodge
Description	Allows lodgment of Statement to verify financial statements of a foreign company or Annual return of a foreign company with ASIC via SBR in the form of the taxonomy schema instance document plus financial statements attached as PDF and XBRL, or iXBRL, for form 405 only.
Stakeholders	ASIC, companies, officeholders, registered agents, responsible entities for schemes and auditors. Software developers and SBR Core
Pre-conditions	Same as in the section 5.1 <i>Prerequisites</i> Successful Prefill and Prelodge (i.e. no errors encountered)
Post-conditions	Success condition: The user receives an acknowledgement response that the lodgment has been received by ASIC. Fail condition: User is advised that the report has not been received or that there were errors found.
Initiating party	Business, Intermediary
Channel	SBR
Core Service Map	Lodge

5.5.1 Lodge Request - Message

5.5.1.1 Discoverable Taxonomy Set References

Schema	f405.0001.lodge.request.02.00.report.xsd
Linkbases	f405.0001lodge.request.02.00.defLink.xml
	f405.0001.lodge.request.02.00.labLinkInfoCls.xml
	f405.0001.lodge.request.02.00.presLink.xml
	f405.0001.lodge.request.02.00.refLink.xml
Schematron	schematron_405_lodge_2.0.xml

5.5.1.2 Standard Business Document Header Content

The WIG provides the specification of the SBDH. The following table specifies the message specific data element values or any variations to the WIG.

Attribute Name	Instructions / Rules	Rule Imp	SBR Msg code
sbdm:Message.Type.Text	1. Mandatory - Value must be "f405.0001.lodge.request" or "f406.0001.lodge.request"	1. MIG	1. SBR.GEN.GEN.4
Business Documents -> Business Document	1. Mandatory one business document for the f405/f406 report 2. Optional a second business document for the XBRL or iXBRL Financial Reports (f405 only) 3. Maximum two XBRL or iXBRL instances are allowed	1. MIG 2. MIG 3. SBR Core Services	1. CMN.ASIC.GEN.0000028 2. CMN.ASIC.GEN.0000060 3. SOAP Fault - sbr:SBR.GEN.FAULT.TOOMA NYINSTANCES"
BusinessDocument.BusinessGeneratedIdentifier.Text	1. Must be unique for each Lodge message – refer to section Error! Reference source not found. Error! Reference source not found.	1. N/A	1. N/A
Attachments -> Attachment	1. Mandatory 2. Maximum of 5 files attached	1. MIG 2. SBR Core Services	1. CMN.ASIC.GEN.0000040 2. SOAP Fault - sbr:SBR.GEN.FAULT.TOOMA NYATTACHMENTS"
Message.Attachment.Filename.Text	1. Optional 2. Type of attachments is PDF, XML or XHTMLOnly 3. Content of the attachment must be valid PDF, XML or XHTML	1. N/A 2. MIG 3. MIG	1. N/A 2. CMN.ASIC.GEN.0000014 3. CMN.ASIC.GEN.0000015
Message.Attachment.Description.Text	1. Mandatory	1. MIG	1. CMN.ASIC.GEN.0000062

5.5.1.3 Standard Business Document Body Content

The following describes the facts and context required to be supplied within the XBRL instance document populated into the SBDB element BusinessDocument.instance.text

5.5.1.3.1 Lodge Request XBRL Context

Context Spec	Hypercube Name	Associated Segment Dimensions	Instructions / Rules	Rule Imp	SBR Msg code
RP	f405.0001.prv.02.00:ReportingParty f405.0001.prv.02.00:ReportingPartyLocalAgentIntermediary f405.0001.prv.02.00:ReportingPartyLocalAgent	ReportPartyType	1. Mandatory only one	1. SchematronID= CMN.ASIC.GEN.0000067	1. CMN.ASIC.GEN.0000067
LAG	f405.0001.prv.02.00:LocalAgent f405.0001.prv.02.00:ReportingPartyLocalAgent f405.0001.prv.02.00:ReportingPartyLocalAgentIntermediary	ReportPartyType	1. Optional- should be same number of contexts LAG type as provided in the Prefill Response	1. N/A	1. N/A
INT	f405.0001.prv.02.00:ReportingPartyLocalAgentIntermediary	ReportPartyType	1. Optional only one	1. SchematronID= CMN.ASIC.GEN.0000068	1. CMN.ASIC.GEN.0000068

5.5.1.3.2 Lodge Request Message Content Table

The following table contains the facts required in the instance document.

Context RP				
Seq No.	XBRL Fact	Instructions / Rules	Rule Imp.	SBR Msg Code
1	OrganisationName (Tuple)	1. Mandatory one		
1.1	OrganisationNameDetails.OrganisationNameType.Code	1. Must have value of "MN"	1. SchematronID= CMN.ASIC.GEN.0000072	1. CMN.ASIC.GEN.0000072

1.2	OrganisationNameDetails.OrganisationName.Text	1. Mandatory must be the name of the foreign company as per ASIC records for the identifier specified in the context RP	1. Agency	1. CMN.ASIC.GEN.0000007
2	OrganisationDetails.PlaceOfIncorporation.Text	1. Optional	1. N/A	1. N/A
3	OrganisationDetails.AnnualGeneralMeeting.Date	1. Optional	1. N/A	1. N/A
4	AddressDetails (Tuple)	1. Mandatory one tuple for the address at the place of incorporation 2. Mandatory one tuple for registered address in Australia	1. SchematronID= CMN.ASIC.405.0000002 2. SchematronID= CMN.ASIC.405.0000030	1. CMN.ASIC.405.0000002 2. CMN.ASIC.405.0000030
4.1	AddressDetails.OverseasAddress.Indicator	1. Mandatory – set to "true" if the address is the registered office in place of incorporation and set to "false" if the address is the registered office in Australia	1. SchematronID= CMN.ASIC.405.0000003	1. CMN.ASIC.405.0000003
4.2	AddressDetails.Currency.Code	1. Mandatory 2. Must be one of the values:: <ul style="list-style-type: none"> • "C" if the address has not changed (same as the address provided in the Prefill response) • "F" for a new address 	1. SchematronID= CMN.ASIC.405.0000039 2. SchematronID= CMN.ASIC.405.0000008	1. CMN.ASIC.405.0000039 2. CMN.ASIC.405.0000008
4.3	AddressDetails.AttentionTo.Text	1. Optional the name of the occupier for the registered office in Australia 2. Required only when the address is the registered address in Australia and the company does not occupy the premises (i.e. 'AddressDetails.OverseasAddress.Indicator' is set to "false" and 'AddressDetails.OccupyPremises.Indicator' is set to "false")	1. N/A 2. SchematronID= CMN.ASIC.405.0000006	1. N/A 2. CMN.ASIC.405.0000006
4.4	AddressDetails.Line1.Text	1. Mandatory	1. XBRL	1. N/A
4.5	AddressDetails.Line2.Text	1. Optional	1. N/A	1. N/A
4.6	AddressDetails.Line3.Text	1. Optional	1. N/A	1. N/A
4.7	AddressDetails.Line4.Text	1. Optional	1. N/A	1. N/A
4.8	AddressDetails.Locality Name.Text	1. Optional	1. N/A	1. N/A
4.9	AddressDetails.Postcode.Text	1. Optional	1. N/A	1. N/A
4.10	AddressDetails.StateOrTerritory.Code	1. Optional	1. N/A	1. N/A
4.11	AddressDetails.Country.Code	1. Mandatory 2. Must be 'AU' for the registered office in Australia 3. Must not be 'AU' for the address in place of incorporation	1. SchematronID= CMN.ASIC.405.0000038 2. SchematronID=	1. CMN.ASIC.405.0000038 2. CMN.ASIC.405.0000042 3. CMN.ASIC.405.0000043

			CMN.ASIC.405.0000042 3. SchematronID= CMN.ASIC.405.0000043	
4.12	AddressDetails.OccupyPremises.Indicator	1. Optional, required only if the address represents the registered address in Australia (i.e. AddressDetails.OverseasAddress.Indicator set to "false")	1. SchematronID= CMN.ASIC.405.0000005	1. CMN.ASIC.405.0000005
4.13	AddressDetails.RegisteredOfficeOccupiersConsent.Indicator	1. Optional, required only if the address represents the registered address in Australia and must be set to 'true'	1. SchematronID= CMN.ASIC.405.0000037	1. CMN.ASIC.405.0000037
4.14	AddressDetails.Start.Date	1. Optional – required if the address has changed (i.e. "AddressDetails.Currency.Code " is set to 'F') 2. Date must be less than or equal to current date	1. SchematronID= CMN.ASIC.405.0000007 2. SchematronID= CMN.ASIC.405.0000068	1. CMN.ASIC.405.0000007 2. CMN.ASIC.405.0000068
5	Officeholder (Tuple)	1. One or many(one for each officeholder in the company)		
5.1	Identifiers.AustralianRegisteredBodyNumber.Identifier	1. Optional - must be provided when the director is an organization 2. Must be the number provided in the Prefill response when the director is a company (registered either in Australia or overseas)	1. SchematronID= CMN.ASIC.405.0000070 2. Agency	1. CMN.ASIC.405.0000070 2. CMN.ASIC.405.0000071
5.2	Identifiers.AustralianBusinessNumber.Identifier	1. Optional when the director is an Australian company holding an ABN	1. N/A	1. N/A
5.3	OrganisationName (Tuple)	1. Optional - required when the Director is a company 2. One tuple for 'Organisation Name Details' or 'Person Name Details' to be provided 3. Must match ASIC records for the existing officeholders (excluding the new appointments)	1. N/A 2. SchematronID= CMN.ASIC.405.0000045 3. Agency	1. N/A 2. CMN.ASIC.405.0000045 3. CMN.ASIC.405.0000061
5.3.1	OrganisationNameDetails.OrganisationNameType.Code	1. Must have value of "MN"	1. SchematronID= CMN.ASIC.GEN.0000072	1. CMN.ASIC.GEN.0000072
5.3.2	OrganisationNameDetails.OrganisationName.Text	1. Mandatory - must be the name of the company that is a 'Director' for the reporting party	1. XBRL	1. N/A
5.4	Party.ChangeName.Indicator	1. Optional if the officeholder is a person who had changed his/her name (either surname or given name)	1. N/A	1. N/A
5.5	PersonNameDetail (Tuple)	1. Required when the Director is a person 2. Optional one tuple for 'Organisation Name Details' or 'Person Name Details' to be provided 3. Must match ASIC records for the existing officeholders (excluding the new appointments)	1. N/A 2. SchematronID= CMN.ASIC.405.0000045 3. Agency	1. N/A 2. CMN.ASIC.405.0000045 3. CMN.ASIC.405.0000060
5.5.1	PersonNameDetails.FamilyName.Text	1. Mandatory the name of the director	1. XBRL	1. N/A
5.5.2	PersonNameDetails.GivenName.Text	1. Mandatory the name of the director	1. XBRL	1. N/A
5.5.3	PersonNameDetails.OtherGivenName.Text	1. Optional	1. N/A	1. N/A

5.5.4	PersonNameDetails.Position.Text	1. Mandatory must be either 'Director' or 'Secretary'	1. SchematronID= CMN.ASIC.405.0000011	1. CMN.ASIC.405.0000011
5.6	PersonNameDetails.NameStart.Date	1. Optional if the officeholder's name had changed (i.e. the 'Party.ChangeName.Indicator' is set to 'true') 2. Date must be less than or equal to current date	1. SchematronID= CMN.ASIC.405.0000012 2. Agency	1. CMN.ASIC.405.0000012 2. CMN.ASIC.GEN.0000084
5.7	OrganisationControl.OfficeholderCessation.Indicator	1. Optional to indicate that the officeholder named in the tuple OrganisationName or PersonNameDetails had ceased to act in the officeholder position	1. N/A	1. N/A
5.8	OrganisationControl.RoleCease.Date	1. Optional the date when the officeholder named in the tuple OrganisationName or PersonNameDetails ceased to act in the officeholder position 2. Mandatory if the element "OrganisationControl.OfficeholderCessation.Indicator" is set to 'true' 3. Date must be less than or equal to current date	1. N/A 2. SchematronID= CMN.ASIC.405.0000013 3. Agency	1. N/A 2. CMN.ASIC.405.0000013 3. CMN.ASIC.GEN.0000084
5.9	OrganisationControl.DirectorAppointment.Indicator	1. Optional to indicate that the officeholder named in the tuple OrganisationName or PersonNameDetails had been appointed to act in the Director position	1. N/A	1. N/A
5.10	OrganisationControl.RoleStart.Date	1. Optional the date when the officeholder named in the tuple OrganisationName or PersonNameDetails had been appointed to act in the officeholder position 2. Mandatory if the element "OrganisationControl.DirectorAppointment.Indicator" is set to 'true' and the Director is a person (PersonNameDetail are populated) 3. Date must be less than or equal to current date	1. N/A 2. SchematronID= CMN.ASIC.405.0000014 3. Agency	1. N/A 2. CMN.ASIC.405.0000014 3. CMN.ASIC.GEN.0000084
5.11	PersonDemographicDetails.Birth.Date	1. Optional representing the date of birth for the officeholder nominated in the tuple 'PersonNameDetails' 2. Mandatory when the officeholder is an individual (i.e.tuple PersonNameDetail is populated) 3. The officeholder must be at least 18 years of age at the date of appointment	1. N/A 2. SchematronID= CMN.ASIC.405.0000015 3. SchematronID= CMN.ASIC.405.0000072	1. N/A 2. CMN.ASIC.405.0000015 3. CMN.ASIC.405.0000072
5.12	PersonDemographicDetails.BirthLocalityName.Text	1. Optional the place of birth for the officeholder nominated in the tuple 'PersonNameDetails' 2. Mandatory when the officeholder is an individual (i.e.tuple PersonNameDetail is populated)	1. N/A 2. SchematronID= CMN.ASIC.405.0000016	1. N/A 2. CMN.ASIC.405.0000016
5.13	PersonDemographicDetails.BirthStateOrTerritory.Code	1. Optional representing the state of birth when the person nominated in the tuple 'PersonNameDetails' is born in Australia 2. Mandatory if the value for "PersonDemographicDetails.BirthCountry.Code" is 'AU'	1. N/A 2. CMN.ASIC.405.0000018	1. N/A 2. CMN.ASIC.405.0000018
5.14	PersonDemographicDetails.BirthCountry.Code	1. Optional required only if the officeholder is a person 2. Mandatory when the officeholder is an individual (i.e.tuple PersonNameDetail is populated)	1. N/A 2. SchematronID= CMN.ASIC.405.0000017	1. N/A 2. CMN.ASIC.405.0000017
5.15	AddressDetails (Tuple)	1. Optional must be the address of the Director		
5.15.1	AddressDetails.OverseasAddress.Indicator	1. Optional	1. N/A	1. N/A

5.15.2	AddressDetails.Currency.Code	<ol style="list-style-type: none"> 1. Mandatory 2. Must be one of the values:: <ul style="list-style-type: none"> • "C" if the address has not changed (same as the address provided in the Prefill response) • "F" for a new address 	<ol style="list-style-type: none"> 1. SchematronID=CMN.ASIC.405.0000039 2. SchematronID=CMN.ASIC.405.0000008 	<ol style="list-style-type: none"> 1. CMN.ASIC.405.0000039 2. CMN.ASIC.405.0000008
5.15.3	AddressDetails.AttentionTo.Text	<ol style="list-style-type: none"> 1. Not required 	<ol style="list-style-type: none"> 1. N/A 	<ol style="list-style-type: none"> 1. N/A
5.15.4	AddressDetails.Line1.Text	<ol style="list-style-type: none"> 1. Mandatory 	<ol style="list-style-type: none"> 1. XBRL 	<ol style="list-style-type: none"> 1. N/A
5.15.5	AddressDetails.Line2.Text	<ol style="list-style-type: none"> 1. Optional 	<ol style="list-style-type: none"> 1. N/A 	<ol style="list-style-type: none"> 1. N/A
5.15.6	AddressDetails.Line3.Text	<ol style="list-style-type: none"> 1. Optional 	<ol style="list-style-type: none"> 1. N/A 	<ol style="list-style-type: none"> 1. N/A
5.15.7	AddressDetails.Line4.Text	<ol style="list-style-type: none"> 1. Optional 	<ol style="list-style-type: none"> 1. N/A 	<ol style="list-style-type: none"> 1. N/A
5.15.8	AddressDetails.LocalityName.Text	<ol style="list-style-type: none"> 1. Optional 	<ol style="list-style-type: none"> 1. N/A 	<ol style="list-style-type: none"> 1. N/A
5.15.9	AddressDetails.Postcode.Text	<ol style="list-style-type: none"> 1. Optional 	<ol style="list-style-type: none"> 1. N/A 	<ol style="list-style-type: none"> 1. N/A
5.15.10	AddressDetails.State OrTerritory.Code	<ol style="list-style-type: none"> 1. Optional 	<ol style="list-style-type: none"> 1. N/A 	<ol style="list-style-type: none"> 1. N/A
5.15.11	AddressDetails.Country.Code	<ol style="list-style-type: none"> 1. Mandatory 2. Must be 'AU' if the 'AddressDetails.OverseasAddress.Indicator' is 'false' 	<ol style="list-style-type: none"> 1. SchematronID=CMN.ASIC.405.0000038 2. SchematronID=CMN.ASIC.405.0000042 	<ol style="list-style-type: none"> 1. CMN.ASIC.405.0000038 2. CMN.ASIC.405.0000042
5.15.12	AddressDetails.OccupyPremises.Indicator	<ol style="list-style-type: none"> 1. Not required 	<ol style="list-style-type: none"> 1. N/A 	<ol style="list-style-type: none"> 1. N/A
5.15.13	AddressDetails.RegisteredOfficeOccupiersConsent.Indicator	<ol style="list-style-type: none"> 1. Not required 	<ol style="list-style-type: none"> 1. N/A 	<ol style="list-style-type: none"> 1. N/A
5.15.14	AddressDetails.Start.Date	<ol style="list-style-type: none"> 1. Optional, required when the address details have changed (i.e. " AddressDetails.Currency.Code " is set to 'F') 2. Date must be before the current date 3. Date cannot be before the officeholder appointment date 	<ol style="list-style-type: none"> 1. SchematronID=CMN.ASIC.405.0000007 2. SchematronID=CMN.ASIC.405.0000068 3. Agency 	<ol style="list-style-type: none"> 1. CMN.ASIC.405.0000007 2. CMN.ASIC.405.0000068 3. CMN.ASIC.405.0000069
6	Declaration (Tuple)	<ol style="list-style-type: none"> 1. Mandatory – two tuples, one for each of the reason codes: ELP and TrueAndCorrect 2. For code value ' ELP', the text associated with the Declaration must read: "I declare that I agree to and that this form is submitted under the terms and condition of the ASIC Electronic 		

		<p>Lodgement Protocol."</p> <p>3. For form 405 code value 'TrueAndCorrect' the text associated with the Declaration must read: "I verify that:</p> <ul style="list-style-type: none"> - the copies annexed to this form are true copies of the documents required to be lodged under s601CK(1) of the Corporations Act 2001 and - the financial information is true and correct as at the end of the financial year " <p>4. For form 406 code value 'TrueAndCorrect' the text associated with the Declaration must read: "I certify that:</p> <ul style="list-style-type: none"> - the company is of a type declared by ASIC under s601CK(7) to be exempt from the provisions of s601CK(1) to (6) of the Corporation Act 2001 and - the information in this form is true and complete." 		
6.1	Declaration.StatementType.Code	<p>Valid mandatory enumerations are :</p> <ol style="list-style-type: none"> 1. 'ELP' 2. 'TrueAndCorrect' 	<ol style="list-style-type: none"> 1. SchematronID=CMN.ASIC.405.0000019 2. SchematronID=CMN.ASIC.405.0000020 	<ol style="list-style-type: none"> 1. CMN.ASIC.405.0000019 2. CMN.ASIC.405.0000020
6.2	Declaration.StatementAccepted.Indicator	<ol style="list-style-type: none"> 1. Must be 'yes' for declaration type 'ELP' 2. Must be 'yes' for declaration type 'TrueAndCorrect' <p>Note that 'yes' implies the UI implementation and the XBRL equivalent is 'true'</p>	<ol style="list-style-type: none"> 1. SchematronID=CMN.ASIC.405.0000034 2. SchematronID=CMN.ASIC.405.0000021 	<ol style="list-style-type: none"> 1. CMN.ASIC.405.0000034 2. CMN.ASIC.405.0000021
6.3	Declaration.Signature.Date	<ol style="list-style-type: none"> 1. Date must be less than or equal to current date for declaration type 'TrueAndCorrect' 2. Date must be less than or equal to current date for declaration type 'ELP' 3. Date is mandatory for declaration type 'TrueAndCorrect' 4. Date is mandatory for declaration type 'ELP' 	<ol style="list-style-type: none"> 1. SchematronID=CMN.ASIC.405.0000022 2. SchematronID=CMN.ASIC.405.0000035 3. SchematronID=CMN.ASIC.405.0000023 4. SchematronID=CMN.ASIC.405.0000036 	<ol style="list-style-type: none"> 1. CMN.ASIC.405.0000022 2. CMN.ASIC.405.0000035 3. CMN.ASIC.405.0000023 4. CMN.ASIC.405.0000036
6.4	Declaration.SignatoryIdentifier.Text	<ol style="list-style-type: none"> 1. Not required 	<ol style="list-style-type: none"> 1. N/A 	<ol style="list-style-type: none"> 1. N/A
7	RegulatoryDisclosures.ClassOrderRelianceADI.Indicator	<ol style="list-style-type: none"> 1. Optional, required for form 405 only 	<ol style="list-style-type: none"> 1. Agency 	<ol style="list-style-type: none"> 1. CMN.ASIC.405.0000024
8	RegulatoryDisclosures.ClassOrderRelianceNo ADI.Indicator	<ol style="list-style-type: none"> 1. Optional required for form 405 only 	<ol style="list-style-type: none"> 1. Agency 	<ol style="list-style-type: none"> 1. CMN.ASIC.405.0000040

Context LAG

Seq No.	XBRL Fact	Instructions / Rules	Rule Imp.	SBR Msg Code
1	OrganisationName (Tuple)	1. Optional one tuple for 'Organisation Name Details' or 'Person Name Details' to be provided	1. SchematronID=CMN.ASIC.405.0000050	1. CMN.ASIC.405.0000050
1.1	Organisatio NameDetails.OrganisationNameType.Code	1. Must have value of "MN"	1. SchematronID=CMN.ASIC.GEN.0000072	1. CMN.ASIC.GEN.0000072
1.2	OrganisationNameDetails.OrganisationName.Text	1. Mandatory - required when the Local Agent is a company 2. Must match ASIC records	1. XBRL 2. Agency	1. N/A 2. CMN.ASIC.405.0000065
2	Identifiers.AustralianCompanyNumber.Identifier	1. Optional required if the Local Agent is an Australian company and it has an ACN	1. N/A	1. N/A
3	Identifiers.AustralianBusinessNumber.Identifier	1. Optional required if the Local Agent is an Australian company and it has an ABN	1. N/A	1. N/A
4	PersonNameDetail (Tuple)	1. Optional one tuple for 'Organisation Name Details' or 'Person Name Details' to be provided 2. Must match ASIC records	1. SchematronID=CMN.ASIC.405.0000050 2. Agency	1. CMN.ASIC.405.0000050 2. CMN.ASIC.405.0000066
4.1	PersonNameDetails.FamilyName.Text	1. Mandatory – must be the surname of the local agent	1. N/A	1. N/A
4.2	PersonNameDetails.GivenName.Text	1. Mandatory – must be the first name of the local agent	1. N/A	1. N/A
4.3	PersonNameDetails.OtherGivenName.Text	1. Optional	1. N/A	1. N/A
4.4	PersonNameDetails.Position.Text	1. Optional	1. N/A	1. N/A
5	Party.ChangeName.Indicator	1. Optional required if the local agent is a person and has changed the name (either surname or given name)	1. N/A	1. N/A
6	PersonNameDetails.NameStart.Date	1. Optional required if the local agent has changed the name (either surname or given name) 2. Mandatory if 'Party.ChangeName.Indicator' is set to "true" 3. Date must be less than or equal to current date	1. N/A 2. SchematronID=CMN.ASIC.405.0000025 3. Agency	1. N/A 2. CMN.ASIC.405.0000025 3. CMN.ASIC.GEN.0000084
7	OrganisationDetails.LocalAgentCessation.Indicator	1. Conditional when the local agent has been ceased	1. N/A	1. N/A
8	OrganisationControl.RoleCease.Date	1. Optional required if the local agent has been ceased 2. Mandatory when "OrganisationDetails.LocalAgentCessation.Indicator" is set to 'true' 3. Date must be less than or equal to current date	1. N/A 2. SchematronID=CMN.ASIC.405.0000026 3. Agency	1. N/A 2. CMN.ASIC.405.0000026 3. CMN.ASIC.GEN.0000084
9	AddressDetails (Tuple)	1. Mandatory one tuple representing the address of the local agent	1. SchematronID=CMN.ASIC.405.0000009	1. CMN.ASIC.405.0000009

9.1	AddressDetails.OverseasAddress.Indicator	1. Optional	1. N/A	1. N/A
9.2	AddressDetails.Currency.Code	1. Mandatory 2. Must be one of the values:: <ul style="list-style-type: none"> "C" if the address has not changed (same as the address provided in the Prefill response) "F" for a new address 	1. SchematronID=CMN.ASIC.405.0000039 2. SchematronID=CMN.ASIC.405.0000008	1. CMN.ASIC.405.0000039 2. CMN.ASIC.405.0000008
9.3	AddressDetails.AttentionTo.Text	1. Not required	1. N/A	1. N/A
9.4	AddressDetails.Line1.Text	1. Mandatory	1. XBRL	1. N/A
9.5	AddressDetails.Line2.Text	1. Optional	1. N/A	1. N/A
9.6	AddressDetails.Line3.Text	1. Optional	1. N/A	1. N/A
9.7	AddressDetails.Line4.Text	1. Optional	1. N/A	1. N/A
9.8	AddressDetails.LocalityName.Text	1. Optional	1. N/A	1. N/A
9.9	AddressDetails.Postcode.Text	1. Optional	1. N/A	1. N/A
9.10	AddressDetails.StateOrTerritory.Code	1. Optional	1. N/A	1. N/A
9.11	AddressDetails.Country.Code	1. Mandatory 2. Must be 'AU'	1. SchematronID=CMN.ASIC.405.0000038 1. SchematronID=CMN.ASIC.405.0000041	1. CMN.ASIC.405.0000038 2. CMN.ASIC.405.0000041
9.12	AddressDetails.OccupyPremises.Indicator	1. Not required	1. N/A	1. N/A
9.13	AddressDetails.RegisteredOfficeOccupiersConsent.Indicator	1. Not required	1. N/A	1. N/A
9.14	AddressDetails.Start.Date	1. Optional required if the address has changed 2. Mandatory if the "AddressDetails.Currency.Code " has been set to 'F' 3. Date must be less than or equal to current date 4. Date cannot be before the local agent appointment date	1. N/A 2. SchematronID=CMN.ASIC.405.0000007 3. SchematronID=CMN.ASIC.405.0000068 4. Agency	1. N/A 2. CMN.ASIC.405.0000007 3. CMN.ASIC.405.0000068 4. CMN.ASIC.405.0000069

Context INT

Seq No.	XBRL Fact	Instructions / Rules	Rule Imp.	SBR Msg Code
1	OrganisationName (Tuple)	1. Optional one tuple for 'Organisation Name Details' or 'Person Name Details' to be provided	1. SchematronID=CMN.ASIC.405.0000053	1. CMN.ASIC.405.0000053
1.1	OrganisationNameDetails.OrganisationNameType.Code	1. Must have value of "MN"	1. SchematronID=CMN.ASIC.GEN.0000072	1. CMN.ASIC.GEN.0000072
1.2	OrganisationNameDetails.OrganisationName.Text	1. Must be same as in ASIC records (the value retrieved from ASIC records using Prefill Service that should be a non-editable field) for the entity identifier specified in the context INT	1. Agency	1. CMN.ASIC.GEN.0000086
2	PersonNameDetails (Tuple)	1. Optional one tuple for 'Organisation Name Details' or 'Person Name Details' to be provided	1. SchematronID=CMN.ASIC.405.0000053	1. CMN.ASIC.405.0000053
2.1	PersonNameDetails.FamilyName.Text	1. Must be the value retrieved from ASIC records using Prefill Service (should be a non-editable field) for the entity identifier specified in the context INT	1. Agency	1. CMN.ASIC.GEN.0000087
2.2	PersonNameDetails.GivenName.Text	1. Must be the value retrieved from ASIC records using Prefill Service (should be a non-editable field) for the entity identifier specified in the context INT	1. Agency	1. CMN.ASIC.GEN.0000087
2.3	PersonNameDetails.OtherGivenName.Text	1. Optional - must be the value retrieved from ASIC records using Prefill Service (should be a non-editable field) for the entity identifier specified in the context INT	1. Agency	1. CMN.ASIC.GEN.0000087
2.4	PersonNameDetails.Position.Text	1. Not required	1. N/A	1. N/A

5.5.2 Lodge Response - Message

The lodge response message has no XBRL payload and ASIC will acknowledge the receipt of the lodge message using the MessageEvent in the SBDH.

5.5.2.1 Discoverable Taxonomy Set References

No XBRL payload so no DTS developed for this message. All relevant content will be contained within the SBDH.

5.5.2.2 Standard Business Document Header Content

Only rules specific to this message are listed in the table below.

Attribute Name	Instructions / Rules
sbdm:Message.Type.Text	1. Mandatory - Value will be "f405.0001.lodge.response" or "f406.0001.lodge.response"
BusinessDocument.GovernmentGeneratedIdentifier.Text	1. Mandatory - unique identifier issued by ASIC that must be used for Request List Lodgment Status message

5.5.2.3 Standard Business Document Body Content

The lodge response message has no XBRL payload.

APPENDIX A – THE MESSAGE CONTENT TABLE EXPLAINED

This section defines the table structure that **must** be used to define the context, structure, and rules of the data elements contained within the XBRL instance document – referred to as the message content table.

There will be a message content table for each context within the message. The grouping of the data elements in accordance to the context aligns to how the data elements are built into the XBRL taxonomy and this consistent presentation will assist Software Developers.

The message content table uses the following rows and columns:

Context Type (row at top of table): This is the name of the XBRL Context Specification or Context Instance which has been defined early in the MIG document.

Sequence Number: This is a sequential number used to indicate the expected order of the data elements within the instance document and to describe the structure of tuples. Data elements within a tuple are allocated a multilevel number to indicate the expected structure and order of the data elements contained within the tuple. If there are nested tuples then the sequence number goes to next numbering level. The following is an extracts from a message content table which illustrates the sequence numbering and multileveling require to cater for tuples and nested tuples.

Seq No.	XBRL Fact
1.	PaymentMechanism (Tuple: zero to many)
1.1.	PaymentMechanism.PaymentMethod.Code
1.2.	PaymentMechanism.Instruction.Text
1.3.	DirectDebit (tuple zero to one)
1.3.1.	Payment Mechanism.Direct DebitAccount.Identifier
1.3.2.	Payment Mechanism.Direct Debit Name.Text
1.4.	DirectCredit (tuple zero to one)
1.4.1.	Payment Mechanism.Direct CreditAccount.Identifier
1.4.2.	Payment Mechanism.Direct CreditName.Text
1.4.3.	FinancialInstitutionAccount (Tuple One Only)
1.4.3.1.	FinancialInstitutionAccount.BankStateBranch.Number
1.4.3.2.	FinancialInstitutionAccount.FinancialInstitutionAccount.Number
1.4.3.3.	FinancialInstitutionAccount.FinancialInstitutionAccountName.Text
1.4.3.4.	FinancialInstitutionAccount.FinancialInstitutionBranchName.Text
1.4.3.5.	FinancialInstitutionAccount.FinancialInstitutionName.Text

XBRL Fact: This is the name of the data element to be reported. For example:

Identifiers.AustralianBusinessNumber.Identifier

Instructions / Rules: This column describes all the instructions / rules applicable to the data element. Each rule needs to be given a sequential number which links the rule to its implementation and message code. Rules would include information such as optionality, presentation criteria and the use of XML attributes such as IsVisible.

Rule Implementation: This column informs Software Developers how the rules specified in the Rules column will be provided. There can only be the following options:

- XBRL – validation provided via the XBRL schemas and linkbases. Typically rules implemented via XBRL do not need to be specified within the MIG. Only those rules that are considered to provide necessary information to software developers should be defined within the MIG. An example of this is the rules associated with the domain values of a dimension within a context specification.
- Schematron ID – for rules that cannot be implemented using XBRL some agencies will provide a schematron implementation of the rule. When schematron is provided then the unique ID used to identify the rule within the schematron file must be provided within the MIG. The following is an example of how this should appear in the column :.Schematron ID = VICMIG001
- MIG - There will be situations where rules will not be provided to Software Developer in a machine readable format and the description of the rule in the MIG is all that will be provided. In this situation the Software Developer has the choice of either implementing the rule as specified within the MIG or they rely on the agency to validate the data element (the expectation is that the Agency will always test for this rule)
- Agency – This rule cannot be implemented by the Software Developer and can only be executed by the agency.
- SBR Core Services – Some rules are executed within SBR Core Services which will only return SOAP Faults.

SBR Message Code: All messages returned via the SBR channel will contain a code to uniquely identify the condition that has occurred.

NOTE: This column is only applicable for request messages and the column will not be present in the table for Response Messages.

In order to allow codes to be managed in a distributed fashion, codes will take the following format:

{Jurisdiction}.{Agency}.{Function}.{Id}

represented by the regular expression

([A-Z0-9])+.([A-Z0-9])+.([A-Z0-9])+.([A-Z0-9])+

Initially

Jurisdiction = SBR | CMN | QLD | NSW | ACT | VIC | SA | WA | NT | TAS

Agency = Jurisdiction specific agency code

For CMN (Commonwealth), = ATO, ASIC, APRA, ABS

For SBR = GEN (i.e. SBR wide codes)

For States = OSR of Offices of State Revenue

Function = Agency specific functional area or GEN for agency wide codes

For SBR = GEN or FAULT

Id = function specific identifier (format may vary across agencies).

Examples are shown below;

SBR.GEN.FAULT.TOOMANYINSTANCES

CMN.ATO.TFN.OK

QLD.OSR.PRL.000001

The above structure recognises and caters for the current situation where agency errors are unharmonised, and will need to be passed through to client software.

The expectation is that for each rule identified within the message content table to have a corresponding message code however depending on the rule implementation a message code may not be relevant in which case Not Applicable (N/A) should be inserted into the rules corresponding message code to make this clear to Software Developers. The follow table summaries what must be provided in the message code column in relation to the rules implementation choice.

Rule Implementation	Message Code
Schematron	Message Code needs to be provided against corresponding rule..
XBRL	Message Code not relevant – place N/A against corresponding rule.
MIG	Message Code needs to be provided against corresponding rule. The only exception is if the rule is associated to rendering instruction to the software developer.
Agency	Message Code needs to be provided against corresponding rule.
SBR Core Services	Message Code not relevant as all issues detected by Core Services will be returned to the Software Developer as SOAP Faults. If a rule needs to be specified within the MIG then the SOAP Fault SubCode should be provided. For more details on error handling within Core Service please refer to the Web Services Implementation Guide (WIG).

The expectation is that each agency will populate a message repository with all error, warning and information message that could be returned via the SBR channel. These message will be allocated an SBR message code using the above mentioned code format. The Software Developer would then use the SBR message code provided via the MIG and the message repository to obtain the full details associated with the message.