



An Australian Government Initiative

Standard Business Reporting

**SBR**

# Standard Business Reporting

## *ASIC Form 7051* Message Implementation Guide

Program name: *Standard Business Reporting*

Date: 30/04/2015

Production release – suitable for use

 This document and its attachments are **Unclassified**



For further information or questions, contact the SBR Service Desk at [SBRServiceDesk@sbr.gov.au](mailto:SBRServiceDesk@sbr.gov.au) or call +61 1300 488 231. International callers may use +61-2-6216 5577

## VERSION CONTROL

Version	Release date	Description of changes
1.0	17/07/2009	Initial release
1.1	16/12/2009	Enhanced as a result of the learnings achieved via the August release.
1.2	22/04/2010	Updates to rules and SBR message codes as result of integration and conformance testing
1.3	30/06/2011	Update references for the IFRS AU Taxonomy; Update table in section 4.3; Update table in section 5.4.1.2; Update table in section 5.5.1.2.
1.4	30/04/2015	Update 'Attachments' section of MIG, and relevant parts of message specifications to include information about attach XBRL and iXBRL financial reports.

## ENDORSEMENT

### APPROVAL

Chief Solutions Architect  
Solutions Integration  
Standard Business Reporting  
Manager  
Systems & Online Services  
ASIC

## Copyright

© Commonwealth of Australia 2011

This work is copyright. Use of this Information and Material is subject to the terms and conditions in the "SBR Disclaimer and Conditions of Use" which is available at [. You must ensure that you comply with those terms and conditions. In particular, those terms and conditions include disclaimers and limitations on the liability of the Commonwealth and an indemnity from you to the Commonwealth and its personnel, the SBR Agencies and their personnel.](#)

You must include this copyright notice in all copies of this Information and Material which you create. If you modify, adapt or prepare derivative works of the Information and Material, the notice must still be included but you must add your own copyright statement to your

---

modification, adaptation or derivative work which makes clear the nature of your modification, adaptation or derivative work and you must include an acknowledgement that the adaptation, modification or derivative work is based on Commonwealth owned Information and Material.

Template

# Table of contents

1	Introduction.....	6
1.1	Purpose.....	6
1.2	Audience and Scope .....	6
1.3	References.....	6
1.4	Change Management.....	6
2	General Instructions .....	7
2.1	Authorisation .....	7
2.2	Declarations .....	7
2.3	SBDH Variations .....	8
2.3.1	Business Documents.....	8
2.3.2	Attachments .....	8
2.3.3	Document Identifiers .....	8
2.3.4	Lodgment date and time interpretation .....	9
2.4	Response Messages.....	9
2.4.1	Messages described in the MIG .....	9
2.4.2	Messages not described in the MIG .....	9
2.4.3	Messages not described at all .....	9
3	Business Overview .....	10
3.1	Business Applicability Period.....	13
3.2	Report Version .....	13
4	XBRL Context Specifications .....	14
4.1	Context Specification - Reporting Party (RP).....	14
4.2	Context Specification - Reporting Party - Intermediary (INT) .....	16
4.3	Context Specification - Reporting Party - Responsible Entity (RE) .....	17
5	ASIC form 7051 Interaction Model.....	18
5.1	Prerequisites .....	18
5.2	Service Summary.....	18
5.3	Prefill Specifications .....	20
5.3.1	Prefill Request - Message .....	20
5.3.1.1	Discoverable Taxonomy Set References .....	20
5.3.1.2	Standard Business Document Header Content.....	20
5.3.1.3	Standard Business Document Body Content .....	21
5.3.2	Prefill Response - Message.....	22
5.3.2.1	Discoverable Taxonomy Set References .....	22
5.3.2.2	Standard Business Document Header Content.....	22
5.3.2.3	Standard Business Document Body Content .....	22
5.4	Prelodge Specifications.....	25
5.4.1	Prelodge Request - Message .....	25
5.4.1.1	Discoverable Taxonomy Set References .....	25
5.4.1.2	Standard Business Document Header Content.....	26
5.4.1.3	Standard Business Document Body Content .....	26
5.4.2	Prelodge Response - Message .....	26
5.4.2.1	Discoverable Taxonomy Set References .....	26
5.4.2.2	Standard Business Document Header Content.....	27
5.4.2.3	Standard Business Document Body Content .....	27
5.5	Lodge Specifications .....	28
5.5.1	Lodge Request - Message .....	28
5.5.1.1	Discoverable Taxonomy Set References .....	28
5.5.1.2	Standard Business Document Header Content.....	29
5.5.1.3	Standard Business Document Body Content .....	30
5.5.2	Lodge Response - Message.....	34
5.5.2.1	Discoverable Taxonomy Set References .....	34
5.5.2.2	Standard Business Document Header Content.....	34
5.5.2.3	Standard Business Document Body Content .....	34

---

Appendix A – The Message Content Table Explained .....	35
--	----

## List of Figures

Figure 1 – ASIC Business Interaction Model.....	12
Figure 2 – ASIC 7051 collaboration diagram .....	18

## Terminology

For definition of the terminology and acronyms used within this document please refer to the glossary on the SBR website – Click here

<https://www.sbr.gov.au/content/public/help/glossary> to go to the glossary.

The key words “MUST”, “MUST NOT”, “REQUIRED”, “SHALL”, “SHALL NOT”, “SHOULD”, “SHOULD NOT”, “RECOMMENDED”, “MAY”, and “OPTIONAL” in this document are to be interpreted as described in RFC 2119 <http://www.ietf.org/rfc/rfc2119.txt>. The use of the word “Mandatory” is to be read as “MUST”.

# 1 INTRODUCTION

## 1.1 PURPOSE

The purpose of this document is to support software developers in the implementation of the SBR reporting service for the ASIC's Form 7051 Notification of Half Yearly Reports.

## 1.2 AUDIENCE AND SCOPE

This document contains the necessary information required to support ASIC's Form 7051 lodgement implementation.

## 1.3 REFERENCES

Ref	Document Link	Document description
1)	The SBR Web Service Implementation Guide document can be downloaded at <a href="https://www.sbr.gov.au/content/myhome/softwaredevelopers/downloads/commoncomponents">https://www.sbr.gov.au/content/myhome/softwaredevelopers/downloads/commoncomponents</a> (requires login)	Technical interface data that is common to all business processes and messages that use the SBR channel: <ul style="list-style-type: none"> <li>• Web service protocol specifications</li> <li>• Standard message header structure</li> <li>• Standard error codes</li> <li>• Authentication protocol and trust broker</li> </ul>
2)	The SBR Taxonomy Architecture document can be downloaded at <a href="https://www.sbr.gov.au/content/myhome/softwaredevelopers/downloads/commoncomponents">https://www.sbr.gov.au/content/myhome/softwaredevelopers/downloads/commoncomponents</a> (requires login)	Reference document that describes the structure of the SBR taxonomy, its naming conventions, release management and change control, and how each business interaction fits within the architecture.
3)	The Software Developer Kit documentation can be accessed at <a href="https://www.sbr.gov.au/content/myhome/softwaredevelopers/sdkguide">https://www.sbr.gov.au/content/myhome/softwaredevelopers/sdkguide</a> (requires login)	Reference information for software developers using the SBR software developer kit
4)	The ASIC Common Services Message Implementation Guide can be accessed at <a href="https://www.sbr.gov.au/content/myhome/softwaredevelopers/downloads/asic/f388">https://www.sbr.gov.au/content/myhome/softwaredevelopers/downloads/asic/f388</a> (requires login)	Reference information that describes the implementation of the ASIC common services.
5)	The 2011 IFRS AU Taxonomy Guide can be accessed at <a href="https://www.sbr.gov.au/content/myhome/softwaredevelopers/downloads/asic">https://www.sbr.gov.au/content/myhome/softwaredevelopers/downloads/asic</a> (requires login)	Reference information that includes description of the structure of the IFRS AU Taxonomy that must be used for Financial Statements and Reports (FINRPT), guidance on preparing the XBRL instance documents and the message implementation rules.

## 1.4 CHANGE MANAGEMENT

If a material change is required to the ASIC 7051 Message Implementation Guide the document will be re-released. The Taxonomy Approval Committee must approve any change.

## 2 GENERAL INSTRUCTIONS

This section provides instructions that are relevant across all collaborations and messages specified within this MIG.

### 2.1 AUTHORISATION

SBR services available for form 7051 can be used by the business users and Intermediaries (i.e. Registered Agent and Registered Auditors).

There is a trust relationship between ASIC and SBR Core Services in terms of user authentication. If a message reaches ASIC, it is assumed that SBR authentication has been successful.

All 7051 'request' messages will be checked and ASIC will validate against its records that the sender is authorised to perform the requested action for the reporting party (disclosing entity).

ASIC will perform the business level authorisation comparing the ABN in the Auskey credential and the other ASIC identifiers (i.e. ACN/ARSN/ARBN or Registered Agent Number/Registered Auditor Number) contained in the business document against ASIC records.

The disclosing entities that are Managed Investment Schemes must use the ABN and SBR credential of their Responsible Entity.

<b>Lodging Party Type</b>	<b>Rules and Validations</b>
Business associates and business users	<ol style="list-style-type: none"> <li>1. The ABN and the ACN/ARBN must belong to same entity, as per records in ASIC system. When the entity is a Managed Investment Scheme identified by an ARSN, the ABN must belong to the Responsible Entity for the scheme, as per records in ASIC system.</li> <li>2. The entity must exist and have a valid identifier ACN/ARSN/ARBN in ASIC register</li> </ol>
Registered Agent or Registered Auditor	<ol style="list-style-type: none"> <li>1. The ABN and the Registered Agent Number or Auditor Number must belong to same entity, as per records in ASIC system</li> <li>2. The registered agent is appointed to lodge on behalf of the business (reporting party). When the reporting party is a Managed Investment Scheme, the agent must be appointed to their Responsible Entity.</li> <li>3. The registered auditors are authorised to lodge on behalf of any business.</li> <li>4. Agent must be registered and provide a valid number</li> </ol>

The validations and the implementation of the above business rules are described in the section XBRL Context Specifications.

### 2.2 DECLARATIONS

The form 7051 requires three declarations from the reporting party (i.e. disclosing entity) indicating that:

1. The information contained in the form is true and correct
2. The form is submitted under the terms and conditions of ASIC Electronic Lodgement Protocol

3. The attached documents are a true copies of the original reports required to be lodged under the section s320 of the Corporation Act 2001

The declarations are required to accompany each lodgment and the lodger must have displayed to them:

- ✓ specific statements describing what they are about to declare. The text is supplied in the section Lodge specification – Message Content Table - rules/instructions for the Declaration tuple
- ✓ an acknowledgement that the declaration is being made by signing the statements in a particular way.

The sender signs by actively confirming what constitute their "signature" using a "tick box", "radio button" , a "submit button" or any similar method.

## 2.3 SBDH VARIATIONS

The WIG describes the SBDH content in detail. Described in this section are only variations from what is defined in the WIG.

### 2.3.1 Business Documents

A maximum of two business documents in the SBDB per message will be accepted for form 7051 messages – one for the report data and one for the XBRL financial reports. The rules regarding the number of business documents will be described in each message specification.

### 2.3.2 Attachments

Some interactions may or must be accompanied by PDF, XML or XHTML attachments. The rules will be covered in each message specification.

### 2.3.3 Document Identifiers

The *sbdm:BusinessDocument.GovernmentGeneratedIdentifier.Text* field will be populated by ASIC in the Lodge response message to provide the business software a unique identification for a lodgment received by ASIC. The field must be used for querying on a lodgment status.

The value for the *sbdm:BusinessDocument.BusinessGeneratedIdentifier.Text* field in the SBDH must be unique for each message.

ASIC will use the value of *sbdm:BusinessDocument.BusinessGeneratedIdentifier.Text* for checking and identifying the duplicate transactions for the message type Lodge request.

There could be occasions when business software may not receive the Lodge Response message due to a number of failure modes (e.g. loss of internet connectivity) for which the logical action by business software should be to resubmit the request. The resubmitted request must use the same value for the *sbdm:BusinessDocument.BusinessGeneratedIdentifier.Text* as the initial failed request. One of the following two scenarios may occur:

- If the initial report lodged with the same business generated identifier and for the same reporting party and same period is fully processed then error CMN.ASIC.GEN.0000065 is returned.



- If the initial report was not processed by ASIC system then the interaction will follow the Lodge interaction pattern and the business software will receive a Lodge response message.

### 2.3.4 Lodgment date and time interpretation

The SBDH contains a lodgment receipt date and time. This is contained in the element `Lodgement.Receipt.Datetime`, is in `xs:dateTime` format and will be provided in UTC time (not local).

For the Form 7051 List Lodgment Status interaction ASIC will provide a date and time for when the form was lodged and fully processed by ASIC system.

As the `xs:dateTime` format requires a time, a default 00:00:00 time will be assigned to the lodgment receipt. It should also be noted that conversion of `Lodgement.Receipt.Datetime` to local time **must** occur before displaying the date. Failure to perform this conversion could lead to an incorrect date being displayed to the user.

For the other Form 7051 interactions (Prefill, Prelodge and Lodge) this element will not be provided.

## 2.4 RESPONSE MESSAGES

### 2.4.1 Messages described in the MIG

Where business rules associated with data elements could be reasonably implemented by a Software Developer they have been described in the business content tables below along with an associated response message code.

### 2.4.2 Messages not described in the MIG

Some business rules are implemented within the ASIC core processing systems but are not practical to be implemented elsewhere as they refer to business data held within the ASIC. These messages are listed in the SBR Response Message Repository only.

Examples of these messages follow:

Message Event Item	Value
<code>Message.Event.Item.Error.Code</code>	CMN.ASIC.GEN.0000003
<code>Message.Event.Item.Severity.Code</code>	Error
<code>Message.Event.Item.Short.Description</code>	Incorrect ACN
<code>Message.Event.Item.Detailed.Description</code>	ACN {acn} is not valid. Value must match an ACN issued by ASIC

### 2.4.3 Messages not described at all

There may be limited messages produced by ASIC core processing systems that have not been documented. They will be returned in the format as described above.

### 3 BUSINESS OVERVIEW

This subsection includes a brief summary of the SBR Form 7051 Notification of half yearly reports service interactions, which represent the key actors and information flows (interactions) that exist between the stakeholders.

The *Corporations Act 2001* specifies that a disclosing entity must, unless they are in their first financial year:

- prepare a financial report and directors' report for each half-year; and
- have the financial report audited or reviewed in accordance with Division 3 of Part 2M.3 and obtain an auditor's report; and
- lodge the financial report, the directors' report and the auditor's report on the financial report with ASIC.

As defined by sections 9, 111 AC, 111 AD, 111 AE, 111 AF, 111 AG and 111 AI of the *Corporations Act 2001*, a disclosing entity is an entity that is listed on the Australian Securities Exchange (ASX).

Section 320 of the *Corporations Act 2001* advises the lodgment period of the above reports with ASIC, and regulation 1.0.09 of the Corporations Regulations 2001 (the regulations) requires documents lodged under s320 to be accompanied by the Form 7051. The form should be lodged 75 days after the end of half financial year, therefore a major peak lodgment time will be expected in March each year as well as mini peaks in April and May.

The Form 7051 lodgement consists of the following components:

1. The proforma 7051
2. Financial statements which are based on what is required by the accounting standards; and generally include:
  - a. Income statement for the year
  - b. Balance sheet as at the end of the year
  - c. Statement of cash flows for the year
  - d. Statement of changes in equity or statement of recognised income and expense for the year
3. Auditor report
4. Directors' declaration
5. Directors' report which must include the auditor's independence declaration
6. Notes to the accounts

The client's legal obligation is met upon receipt of a complete Form 7051 and required attachments.

On submission of the Form 7051, ASIC will validate the document against the legislative requirements and internal policy and procedure. The document will only be processed by ASIC once all required documentation is received.

Reference: More information on the f7051 form can be viewed on ASIC's website or the form can be viewed directly

[http://www.asic.gov.au/asic/pdf/lib.nsf/LookupByFileName/1001.pdf/\\$file/1001.pdf](http://www.asic.gov.au/asic/pdf/lib.nsf/LookupByFileName/1001.pdf/$file/1001.pdf)

The SBR implementation of the above legislation will comprise of:

1. The proforma 7051 (referred to as the form 7051 or 7051 coversheet)
2. A PDF attachment of the financials (current PDF submissions are a combination of items 2-6 listed above)
3. Financial reports and statements in XBRL format.
4. Financial reports and statements in iXBRL format.

5.

The Financial Reports taxonomy (FINRPT) covers items 2-6 listed above.

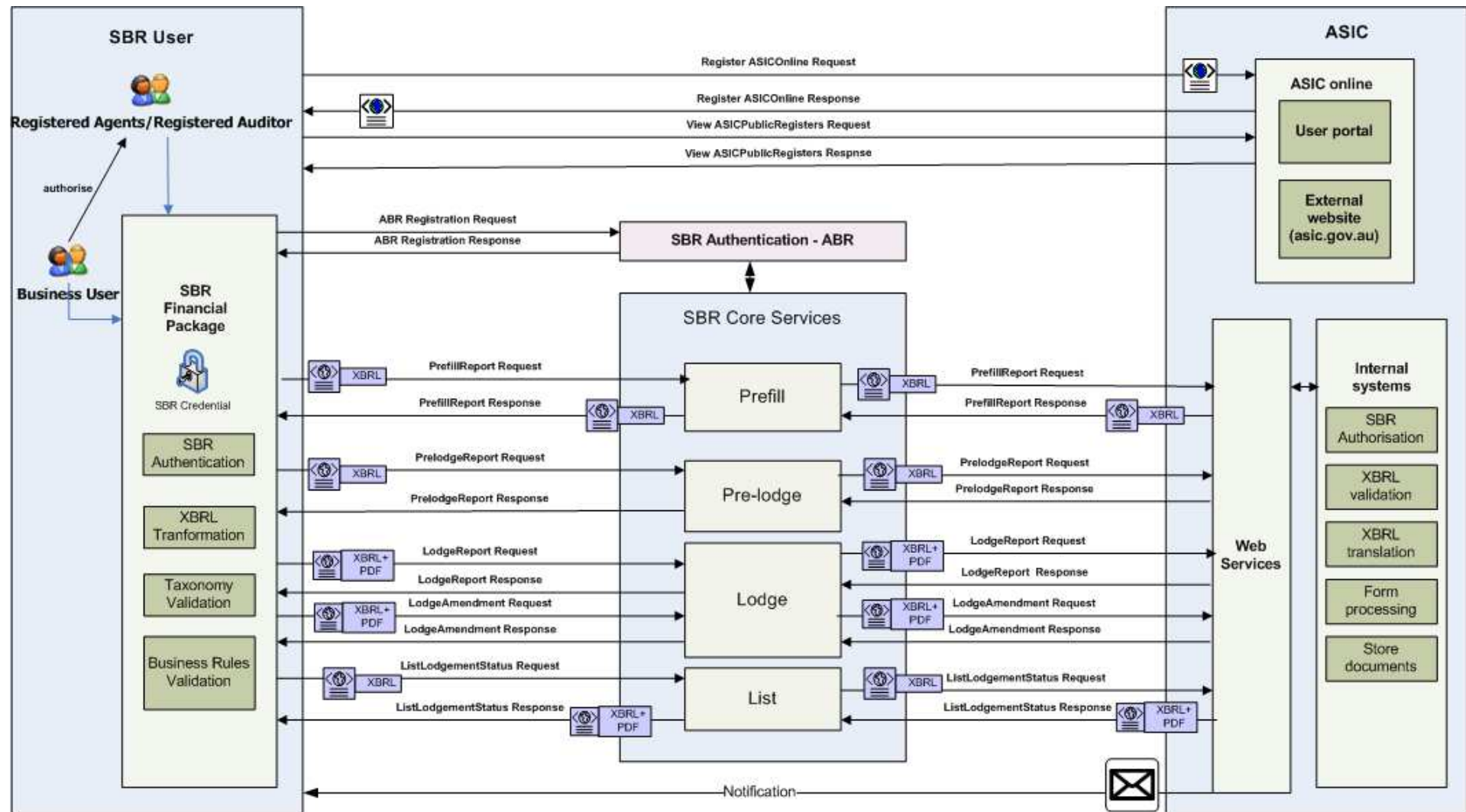


Figure 1 – ASIC Business Interaction Model

### 3.1 BUSINESS APPLICABILITY PERIOD

The lodgment for Form 7051 always requires the latest reporting schema to be used regardless of the period that the data relates to. If ASIC requires changes to the information being reported and makes changes to the form 7051, the new schema will supersede the old one immediately.

For example, if 'Notification of half yearly reports ' were to be reported in 2010 for the financial years 2006, 2007, 2008, 2009 Software developers would use the latest f7051 schema in 2010 for all year 7051 reports.

### 3.2 REPORT VERSION

The current report version is **f7051.0001.02.01**.

## 4 XBRL CONTEXT SPECIFICATIONS

The following sections define the context specifications that will be used within this MIG. The context types are allocated to the individual data elements within the message specifications below.

### 4.1 CONTEXT SPECIFICATION - REPORTING PARTY (RP)

This context type defines the reporting party (i.e. the primary entity to which the report directly relates), with a Period Type of Duration (Start and End Dates). Data elements that are reported under this context will use the context label of RP.

XBRL Instance Context Data Concept	Requirement	Instructions/Rules	Rule Imp	SBR Msg code
Context Identifier	Mandatory	This is a unique identifier used to link the data element to a defined XBRL context. SBR is recommending a four character id starting with 'C' and a three digit sequential number for each context eg C001 1. Must be a valid value	1. XBRL	1. N/A
Entity Identifier	Mandatory	This field must be set to the ACN or ARSN or ARBN that the business document instance relates to. 1. Must be a valid ACN or ARSN or ARBN nine digits long 2. ACN must be a valid value that exists in ASIC systems 3. ARSN must be a valid value that exists in ASIC systems 4. ARBN must be a valid value that exists in ASIC systems 5. The entity status can be cannot be 'deregistered' 6. The ABN provided in the SAML and the ACN/ARSN/ARBN must belong to same entity 7. The ABN must exist in ASIC system	1. XBRL 2. Agency 3. Agency 4. Agency 5. Agency 6. Agency 7. Agency	1. N/A 2. CMN.ASIC.GEN.0000048 3. CMN.ASIC.GEN.0000048 4. CMN.ASIC.GEN.0000048 5. CMN.ASIC.GEN.0000063 6. CMN.ASIC.GEN.0000048 7. CMN.ASIC.GEN.0000048
Entity Identifier Scheme	Mandatory	This field must be set to the URL of the agency followed by the relevant identifier acronym for example - <a href="http://www.asic.gov.au/ACN">http://www.asic.gov.au/ACN</a> or <a href="http://www.asic.gov.au/ARSN">http://www.asic.gov.au/ARSN</a> or <a href="http://www.asic.gov.au/ARBN">http://www.asic.gov.au/ARBN</a>	1. Agency	1. CMN.ASIC.GEN.0000048

XBRL Instance Context Data Concept	Requirement	Instructions/Rules	Rule Imp	SBR Msg code
Entity Segment	Mandatory	1. Explicit member dimension ReportPartyType must be set to "h04.02.02:ReportingParty" 2. Mandatory only one context can have this segment value	1. Schematron 2. Schematron	1. CMN.ASIC.GEN.0000083 2. CMN.ASIC.7051.0000006
Period Date - Start Date	Mandatory	The start date relevant to the report 1. Must be a valid date before the date of lodgement 2. Must be equal with the last balance date (ASIC system) plus one day 3. Reports must not have already been lodged for same period	1. Agency 2. Agency 3. Agency	1. CMN.ASIC.GEN.0000056 2. CMN.ASIC.7051.0000001 3. CMN.ASIC.7051.0000029
Period Date - End Date	Mandatory	The end date relevant to the report 1. Must be a valid date before the date of lodgement 2. Must be within seven days of six months after the period start date 3. Date cannot be before the date of registration of the entity	1. Agency 2. Agency 3. Agency	1. CMN.ASIC.7051.0000003 2. CMN.ASIC.7051.0000002 3. CMN.ASIC.7051.0000003

## 4.2 CONTEXT SPECIFICATION - REPORTING PARTY - INTERMEDIARY (INT)

This context type defines the intermediary party. Data elements that are reported under this context will use the context label of INT.

XBRL Instance Context Data Concept	Requirement	Instructions/Rules	Rule Imp	SBR Msg code
Context Identifier	Mandatory	This is a unique identifier used to link the data element to a defined XBRL context. SBR is recommending a four character id starting with 'C' and a three digit sequential number for each context eg C001 1. Must be a valid value	1. XBRL	1. N/A
Entity Identifier	Mandatory	This field must be set to the Registered Agent Number or Auditor Number of the intermediary lodging the report. 1. The Auditor Number must exist in ASIC systems 2. The Registered Agent Number must exist in ASIC system 3. The Registered Agent must be appointed to the entity specified in the 'ReportingParty' context	1. Agency 2. Agency 3. Agency	1. CMN.ASIC.GEN.0000048 2. CMN.ASIC.GEN.0000019 3. CMN.ASIC.GEN.0000048
Entity Identifier Scheme	Mandatory	This field must be set to the URL of the agency followed by the relevant identifier acronym for example: <b>http://www.asic.gov.au/RegisteredAgent</b> or <b>http://www.asic.gov.au/Auditor</b>	1. Agency	1. CMN.ASIC.GEN.0000050
Entity Segment	Mandatory	1. Explicit member dimension ReportPartyType must be set to "h04.02.02:Intermediary"	1. Schematron	1. CMN.ASIC.GEN.0000083
Period Date - Start Date	Mandatory	The start date relevant to the report 1. Must be a valid date 2. Period start date must be same as for context RP	1. Agency 2. Schematron	1. CMN.ASIC.GEN.0000056 2. CMN.ASIC.GEN.0000069
Period Date - End Date	Mandatory	The end date relevant to the report 1. Must be a valid date 2. Must be same as period end date in context RP	1. Agency 2. Schematron	1. CMN.ASIC.GEN.0000056 2. CMN.ASIC.GEN.0000070



### 4.3 CONTEXT SPECIFICATION - REPORTING PARTY - RESPONSIBLE ENTITY (RE)

This context type defines the responsible entity of the reporting party. Data elements that are reported under this context will use the context label of RE.

XBRL Instance Context Data Concept	Requirement	Instructions/Rules	Rule Imp	SBR Msg code
Context Identifier	Mandatory	This is a unique identifier used to link the data element to a defined XBRL context. SBR is recommending a four character id starting with 'C' and a three digit sequential number for each context eg C001 1. Must be a valid value	1. MIG	1. SBR.GEN.GEN.19
Entity Identifier	Mandatory	This field must be set to the ACN of the Responsible Entity 1. Must be a valid ACN in ASIC system 2. The ACN must belong to the responsible entity for the reporting party identified in context RP	1. Agency 2. Agency	1. CMN.ASIC.GEN.0000003 2. CMN.ASIC.7051.0000005
Entity Identifier Scheme	Mandatory	This field must be set to :- <a href="http://www.asic.gov.au/ACN">http://www.asic.gov.au/ACN</a>	1. Agency	1. CMN.ASIC.GEN.0000048
Entity Segment	Mandatory	1. Explicit member dimension ReportPartyType must be set to "h04.02.02:ResponsibleEntity"	1. Schematron	1. CMN.ASIC.GEN.0000083
Period Date - Start Date	Mandatory	The start date relevant to the report 1. Must be valid dates 2. Period start date must be same as for context RP	1. Agency 2. Schematron	1. CMN.ASIC.GEN.0000056 2. CMN.ASIC.GEN.0000069
Period Date - End Date	Mandatory	The end date relevant to the report 1. Must be a valid date 2. Period end date must be same as for context RP	1. Agency 2. Schematron	1. CMN.ASIC.GEN.0000056 2. CMN.ASIC.GEN.0000070

## 5 ASIC FORM 7051 INTERACTION MODEL

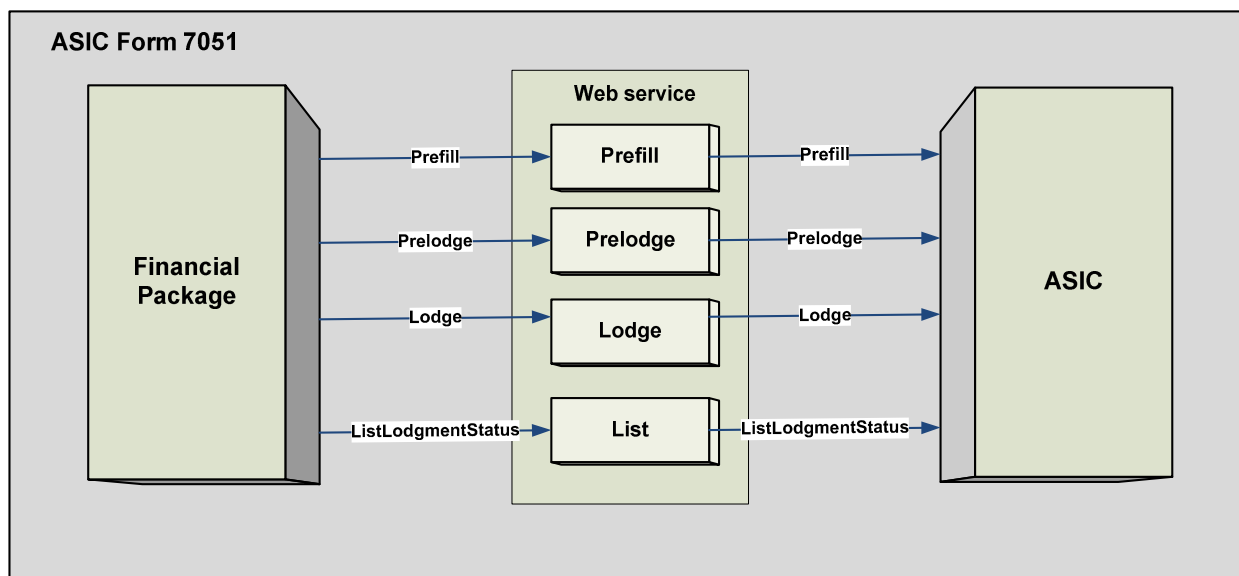


Figure 2 – ASIC 7051 collaboration diagram

### 5.1 PREREQUISITES

Before using SBR channel for transacting with ASIC, the following conditions must be met:

- The Business or the Intermediary must obtain an SBR credential
- The Business or the Intermediary must have an SBR enabled financial package
- The financial package must have the financial terms in their accounts mapped to the elements of Financial Statements defined by the SBR Taxonomy or alternatively be able to support the upload of XBRL Financial Reports that may have been generated by a 3rd party product
- The Intermediary must possess a current registration with ASIC as either a Registered Agent or Registered Auditor and their ABN must be recorded within ASIC systems
- A Registered Agent must be appointed to act on behalf of the business they are lodging documents for

### 5.2 SERVICE SUMMARY

The workflow defined above represents the abstract process model for the 7051 'Notification of half yearly reports'. The following defines the sequence, optionality and repeatability of the service execution. Where a service is identified as '*Mandatory*' then the Software Developer has to implement this service in order to complete the transaction.

Optional services like List must still be developed because it provides information to the business regarding their lodgment status as the service needs to be executed by the business.

Repeatability indicates if the service can execute the service more than once – 'Yes' meaning that a service can be executed multiple times within the sequence.

**The services will work optimally if implemented in the order described below.**

	<b>Service Name</b>	<b>Mandatory</b>	<b>Repeatability</b>
1	<p><b>Prefill ASIC 7051</b></p> <p><b>Request</b> - Request details as current in ASIC records relevant for the specified report.</p> <p><b>Response</b> - Returns details pertaining to the specified report, as current in ASIC records.</p>	Yes	Yes
2	<p><b>Prelodge ASIC 7051</b></p> <p><b>Request</b> - Request to validate completed report against ASIC specific back-end data, business rules and taxonomy schema. This includes syntactical errors and also the user authorisation.</p> <p><b>Response</b> - Return errors encountered during the validation or a success message.</p>	Yes	Yes
3	<p><b>Lodge ASIC 7051</b></p> <p>This service is used for lodging a report 7051.</p> <p><b>Lodge Request</b> – Form 7051 lodgment via SBR to ASIC must include:</p> <ul style="list-style-type: none"> <li>- Coversheet Form 7051 - XBRL</li> <li>- PDF of the financial statements</li> <li>- XBRL of the financial statements (optional)</li> </ul> <p><b>Lodge Response</b> - User receives response message to indicate that ASIC has received the lodgment including an agency generated reference number that can be used to enquire the status of lodgment (see List Lodgment Status service). Alternatively, the response message will return the errors found, indicating that the report has not been accepted</p>	Yes	No*
4	<p><b>List</b></p> <p>The List service is used for updating user with information regarding the status of a SBR lodgment ( ListLodgmentStatus) for an ASIC report and it must be invoked after a successful lodgment response has been received.</p> <p>The List service is a common service which is not form specific and it requires only one implementation irrespective of the number of ASIC reports being implemented.</p> <p><b>a) ListLodgmentStatus</b></p> <p><b>Request</b> – Enquiry about the status details for a report submitted to and accepted by ASIC using the SBR channel, quoting the reference number received in the Response Lodge.</p> <p><b>Response</b> - Returns the status of a lodgment. If successfully processed, it will include one or two PDF documents: ASIC rendered form and the Payment Advice.</p> <p>This service is common across a number of ASIC collaborations and has been specified within the ASIC Common Services Message Implementation Guide.</p>	No	Yes

\*The Lodge can be repeated only if the initial lodgment has been unsuccessful (e.g. no response, the response returns errors and informs that lodgment is rejected) - refer to section 2.3.3

## 5.3 PREFILL SPECIFICATIONS

<b>Interaction Name</b>	Prefill
<b>Description</b>	Request and obtain information held by ASIC that facilitates entering data on the form.
<b>Stakeholders</b>	ASIC, companies, officeholders, registered agents, responsible entities for schemes and auditors. Software developers and SBR Core
<b>Pre-conditions</b>	Same as in the section 5.1 <i>Prerequisites</i>
<b>Post-conditions</b>	Success condition: Pre-filled response is returned with appropriate data. Fail condition: User not authorised to request pre-fill data for this entity
<b>Initiating party</b>	Business, Intermediary
<b>Channel</b>	SBR
<b>Core Service Map</b>	Prefill

### 5.3.1 Prefill Request - Message

#### 5.3.1.1 Discoverable Taxonomy Set References

<b>Schema</b>	f7051.0001.prefill.request.02.00.report.xsd
<b>Linkbases</b>	f7051.0001.prefill.request.02.00.defLink.xml
	f7051.0001.prefill.request.02.00.labLinkInfoCls.xml
	f7051.0001.prefill.request.02.00.presLink.xml
	f7051.0001.prefill.request.02.00.refLink.xml
<b>Schematron</b>	N/A

#### 5.3.1.2 Standard Business Document Header Content

The WIG provides the specification of the SBDH. The following table specifies the message specific data element values or any variations to the WIG.

Attribute Name	Instructions / Rules	Rule Imp	SBR Msg code
sbdm:Message.Type.Text	1. Mandatory - Value must be "f7051.0001.prefill.request"	1. MIG	1. SBR.GEN.GEN.4

### 5.3.1.3 Standard Business Document Body Content

The following describes the facts and context required to be supplied within the XBRL instance document populated into the SBDB element BusinessDocument.instance.text

#### 5.3.1.3.1 Prefill Request XBRL Context

Context Spec	Hypercube Name	Associated Segment Dimensions	Instructions / Rules	Rule Imp	SBR Msg code
RP	f7051.0001.prv.02.00:ReportingParty	ReportPartyType	1. Mandatory, only one	1. SchematronID=CMN.ASIC.7051.0000006	1. CMN.ASIC.7051.0000006
INT	f7051.0001.prv.02.00:Intermediary	ReportPartyType	1. Optional only one when request from an intermediary	1. SchematronID=CMN.ASIC.7051.0000007	1. CMN.ASIC.7051.0000007

#### 5.3.1.3.2 Prefill Request Message Content Table

The following table contains the facts required in the instance document.

Context RP				
Seq No.	XBRL Fact	Instructions / Rules	Rule Imp.	SBR Msg Code
1	Report.Type.Code	1. Mandatory - value must be "f7051"	1Agency	1. SBR.GEN.GEN.21

Context INT				
Seq No.	XBRL Fact	Instructions / Rules	Rule Imp.	SBR Msg Code
1	Report.Submission.Date	1. Mandatory	1. Agency	1. CMN.ASIC.GEN.0000071

## 5.3.2 Prefill Response - Message

### 5.3.2.1 Discoverable Taxonomy Set References

<b>Schema</b>	f7051.0001.prefill.response.02.00.report.xsd
<b>Linkbases</b>	f7051.0001.prefill.response.02.00.defLink.xml
	f7051.0001.prefill.response.02.00.labLinkInfoCls.xml
	f7051.0001.prefill.response.02.00.presLink.xml
	f7051.0001.prefill.response.02.00.refLink.xml

### 5.3.2.2 Standard Business Document Header Content

The WIG provides the specification of the SBDH. The following table specifies the message specific data element values or any variations to the WIG.

Attribute Name	Instructions / Rules
sbdm:Message.Type.Text	1. Mandatory - Value will be "f7051.0001.prefill.response"

### 5.3.2.3 Standard Business Document Body Content

The following describes the facts and context required to be supplied within the XBRL instance document populated into the SBDB element BusinessDocument.Instance.Text

**5.3.2.3.1 Prefill Response XBRL Context**

Context Spec	Hypercube Name	Associated Segment Dimensions	Instructions / Rules
RP	f7051.0001.prv.02.00:ReportingParty	ReportPartyType	1. Mandatory only one
INT	f7051.0001.prv.02.00:Intermediary	ReportPartyType	1. Optional only one when request from an Intermediary
RE	f7051.0001.prv.02.00:ReportingPartyResponsibleEntityIntermediary	ReportPartyType	1. Optional only one when RP is a Managed Investment Scheme

**5.3.2.3.2 Prefill Response Message Content Table**

The following table contains the facts required in the instance document.

Context RP		
Seq No.	XBRL Fact	Instructions / Rules
1	OrganisationName (Tuple)	1. Mandatory one
1.1	Organisation Name Details.Organisation Name Type.Code	1. Mandatory 2. Non-editable field
1.2	Organisation Name Details.Organisation Name.Text	1. Mandatory 2. Non-editable field

Context INT		
Seq No.	XBRL Fact	Instructions / Rules
1	OrganisationName (Tuple)	1. Optional only one
1.1	Organisation Name Details.Organisation Name Type.Code	1. Mandatory 2. Non-editable field

1.2	Organisation Name Details.Organisation Name.Text	1. Mandatory 2. Non-editable field
2	PersonNameDetails (Tuple)	1. Optional only one
2.1	Person Name Details.Family Name.Text	1. Mandatory 2. Non-editable field
2.2	Person Name Details.Given Name.Text	1. Mandatory 2. Non-editable field
2.3	Person Name Details.Other Given Name.Text	1. Optional 2. Non-editable field
2.4	Person Name Details.Position.Text	1. Optional 2. Non-editable field

Context RE		
Seq No.	XBRL Fact	Instructions / Rules
1	OrganisationName (Tuple)	1. Optional only one
1.1	Organisation Name Details.Organisation Name Type.Code	1. Mandatory 2. Non-editable field
1.2	Organisation Name Details.Organisation Name.Text	1. Mandatory 2. Non-editable field



## 5.4 PRELODGE SPECIFICATIONS

<b>Interaction Name</b>	Prelodge
<b>Description</b>	<p>Allows a business or intermediary to validate a completed report prior to submission.</p> <p>This service executes:</p> <ul style="list-style-type: none"> <li>- Validation of report data against ASIC specific business rules and back-end data, and</li> <li>- Schema validation of XBRL instance document for the report, and</li> <li>- Schema validation for XBRL instance for Financial Reports , or</li> <li>- Schema validation for iXBRL instance for Financial Reports</li> </ul> <p>No validation is performed for the PDF attachments and no attachments are expected for this interaction.</p> <p>The pre-lodge service can be used as many times as required to validate the report prior to submission.</p>
<b>Stakeholders</b>	ASIC, companies, officeholders, registered agents, responsible entities for schemes and auditors. Software developers and SBR Core
<b>Pre-conditions</b>	Same as in the section 5.1 <i>Prerequisites</i>
<b>Post-conditions</b>	<p><b>Success condition:</b> Return the list of errors found on the report, allowing the user to determine exactly where the errors occurred. If no errors are found, message will return an 'information' event.</p> <p><b>Fail condition:</b> User is not authorised to submit this report on behalf of the business</p>
<b>Initiating party</b>	Business, Intermediary
<b>Channel</b>	SBR
<b>Core Service Map</b>	Prelodge

### 5.4.1 Prelodge Request - Message

#### 5.4.1.1 Discoverable Taxonomy Set References

<b>Schema</b>	f7051.0001.prelodge.request.02.00.report.xsd
<b>Linkbases</b>	f7051.0001.prelodge.request.02.00.defLink.xml
	f7051.0001.prelodge.request.02.00.labLinkInfoCls.xml
	f7051.0001.prelodge.request.02.00.presLink.xml
	f7051.0001.prelodge.request.02.00.refLink.xml
<b>Schematron</b>	schematron_7051_prelodge_2.0.xml

### 5.4.1.2 Standard Business Document Header Content

The WIG provides the specification of the SBDH. The following table specifies the message specific data element values or any variations to the WIG.

Attribute Name	Instructions / Rules	Rule Imp	SBR Msg code
sbdm:Message.Type.Text	1. Mandatory - Value must be "f7051.0001.prelodge.request"	1. MIG	1. SBR.GEN.GEN.4
<b>Business Documents -&gt; Business Document</b>	1. Mandatory one business document for the f7051 report 2. Optional a second business document for the XBRL Financial Reports 3. Maximum two XBRL instances are allowed	1. MIG 2. MIG 3. SBR Core Services	1. CMN.ASIC.GEN.0000028 2. CMN.ASIC.GEN.0000060 3. SOAP Fault - sbr:SBR.GEN.FAULT.TOOMANYINSTANCES"
<b>Attachments -&gt; Attachment</b>	1. Optional with a maximum of 5 attachment files	1. SBR Core Services	1. SOAP Fault - sbr:SBR.GEN.FAULT.TOOMANYATTACHMENTS"
Message.Attachment.Filename.Text	1. Optional 2. Type of attachments is PDF, XML or XHTMLOnly 3. Content of the attachment must be valid PDF, XML or XHTML	1. N/A 2. MIG 3. MIG	1. N/A 2. CMN.ASIC.GEN.0000014 3. CMN.ASIC.GEN.0000015
Message.Attachment.Description.Text	1. Mandatory	1. MIG	1. CMN.ASIC.GEN.0000062

### 5.4.1.3 Standard Business Document Body Content

The content and validation rules are identical with the rules for the Lodge Request message – see section **Error! Reference source not found.**

#### 5.4.1.3.1 Prelodge Request XBRL Context

XBRL *Context* will be identical with the Lodge Request message – see section 5.5 *Lodge Specifications*.

#### 5.4.1.3.2 Prelodge Request Message Content Table

The facts are identical with the facts in the Lodge Request message – see section 5.5 *Lodge Specifications*.

## 5.4.2 Prelodge Response - Message

The Prelodge response message has no XBRL payload and ASIC will acknowledge the receipt of the lodge message using the MessageEvent in the SBDH.

### 5.4.2.1 Discoverable Taxonomy Set References

The response message has no XBRL payload so no DTS developed for this message. All relevant content will be contained within the SBDH.

### 5.4.2.2 Standard Business Document Header Content

Only rules specific to this message are listed in the table below.

Attribute Name	Instructions / Rules
sbdm:Message.Type.Text	1. Mandatory - Value will be "f7051.0001.prelodge.response"

### 5.4.2.3 Standard Business Document Body Content

The following describes the facts and context required to be supplied within the XBRL instance document populated into the SBDB element BusinessDocument.instance.text

#### 5.4.2.3.1 Prelodge Response XBRL Context

The Prelodge Response message has no XBRL payload. The list of errors and warnings will be returned in the SBDH.

#### 5.4.2.3.2 Prelodge Response Message Content Table

The prelodge response message has no XBRL payload.

### 5.5 LODGE SPECIFICATIONS

<b>Interaction Name</b>	Lodge
<b>Description</b>	Allows lodgment of <b>Half yearly reports</b> with ASIC via SBR in the form of the taxonomy schema instance document plus financial statements attached as PDF documents and optional financial reports in XBRL or iXBRL format.
<b>Stakeholders</b>	ASIC, companies, officeholders, registered agents, responsible entities for schemes and auditors. Software developers and SBR Core
<b>Pre-conditions</b>	Same as in the section 5.1 <i>Prerequisites</i> Successful Prelodge (i.e. no errors encountered)
<b>Post-conditions</b>	Success condition: The user receives an acknowledgement response that the lodgment has been received by ASIC. Fail condition: User is advised that the report has not been received or that there were errors found.
<b>Initiating party</b>	Business, Intermediary
<b>Channel</b>	SBR
<b>Core Service Map</b>	Lodge

#### 5.5.1 Lodge Request - Message

##### 5.5.1.1 Discoverable Taxonomy Set References

<b>Schema</b>	f7051.0001.lodge.request.02.00.report.xsd
<b>Linkbases</b>	f7051.0001lodge.request.02.00.defLink.xml
	f7051.0001.lodge.request.02.00.labLinkInfoCls.xml
	f7051.0001.lodge.request.02.00.presLink.xml
	f7051.0001.lodge.request.02.00.refLink.xml
<b>Schematron</b>	schematron_7051_lodge_2.0.xml

### 5.5.1.2 Standard Business Document Header Content

The WIG provides the specification of the SBDH. The following table specifies the message specific data element values or any variations to the WIG.

Attribute Name	Instructions / Rules	Rule Imp	SBR Msg code
sbdm:Message.Type.Text	1. Mandatory - Value must be "f7051.0001.lodge.request"	1. MIG	1. SBR.GEN.GEN.4
<b>Business Documents -&gt; Business Document</b>	1. Mandatory one business document for the f7051 report 2. Optional a second business document for the XBRL Financial Reports 3. Maximum two XBRL instances are allowed	1. MIG 2. MIG 3. SBR Core Services	1. CMN.ASIC.GEN.0000028 2. CMN.ASIC.GEN.0000060 3. SOAP Fault - sbr:SBR.GEN.FAULT.TOOMA NYINSTANCES"
BusinessDocument.BusinessGeneratedIdentifier.Text	1. Must be unique for each Lodge message – refer to section <b>Error! Reference source not found. Error! Reference source not found.</b>	1. N/A	1. N/A
<b>Attachments -&gt; Attachment</b>	1. Mandatory 2. Maximum of 5 files attached	1. MIG 2. SBR Core Services	1. CMN.ASIC.GEN.0000040 2. SOAP Fault - sbr:SBR.GEN.FAULT.TOOMA NYATTACHMENTS"
Message.Attachment.Filename.Text	1. Optional 2. Type of attachments is PDF, XML or XHTMLOnly 3. Content of the attachment must be valid PDF, XML or XHTML	1. N/A 2. MIG 3. MIG	1. N/A 2. CMN.ASIC.GEN.0000014 3. CMN.ASIC.GEN.0000015
Message.Attachment.Description.Text	1. Mandatory	1. MIG	1. CMN.ASIC.GEN.0000062

### 5.5.1.3 Standard Business Document Body Content

The following describes the facts and context required to be supplied within the XBRL instance document populated into the SBDB element BusinessDocument.instance.text

#### 5.5.1.3.1 Lodge Request XBRL Context

Context Spec	Hypercube Name	Associated Segment Dimensions	Instructions / Rules	Rule Imp	SBR Msg code
RP	f7051.0001.prv.02.00:ReportingParty; f7051.0001.prv.02.00:ReportingPartyResponsibleEntityIntermediary	ReportPartyType	1. Mandatory only one	1. SchematronID= CMN.ASIC.7051.0000006	1. CMN.ASIC.7051.0000006
INT	f7051.0001.prv.02.00:Intermediary f7051.0001.prv.02.00:ReportingPartyIntermediary f7051.0001.prv.02.00:ReportingPartyResponsibleEntityIntermediary	ReportPartyType	1. Optional only one	1. SchematronID= CMN.ASIC.7051.0000007	1. CMN.ASIC.7051.0000007
RE	f7051.0001.prv.02.00:ReportingPartyResponsibleEntityIntermediary	ReportPartyType	1. Conditional – required only when the entity in the RP context is a managed investment scheme	1. Agency	1. CMN.ASIC.7051.0000040

#### 5.5.1.3.2 Lodge Request Message Content Table

The following table contains the facts required in the instance document.

Context RP					
Seq No.	XBRL Fact	Instructions / Rules	Rule Imp.	SBR Msg Code	
1	Organisation NameDetails (Tuple)	1. Mandatory one	1. MIG	1. CMN.ASIC.7051.0000016	
1.1	OrganisationNameDetails.OrganisationalNameType.Code	1. Must have value of "MN"	1. SchematronID= CMN.ASIC.GEN.0000072	1. CMN.ASIC.GEN.0000072	

1.2	Organisation Name Details.Organisation Name.Text	1. Must exist in ASIC records and match the identifier (ACN/ARSN/ARBN) specified in the context	1. Agency	1. CMN.ASIC.GEN.0000007
2	Declaration (Tuple)	<p>1. Mandatory – three tuples</p> <p>2. Must have three tuples, one for each of the reason codes: ELP, TrueAndCorrect and s320</p> <p>3. For code value ' ELP', the text associated with the Declaration must read: "I declare that I agree to and that this form is submitted under the terms and condition of the ASIC Electronic Lodgement Protocol."</p> <p>4. For code value 'TrueAndCorrect' the text associated with the Declaration must read: "I certify that the information in this form is true and complete and that i am lodging these reports as, or on behalf of the company.'</p> <p>5. For code value 's320' the text associated with the Declaration must read: "I certify that the attached documents are a true copy of the original reports required to be lodged under section 320 of the Corporation Act 2001"</p>	<p>1. N/A</p> <p>2. N/A</p> <p>3. N/A</p> <p>4. N/A</p> <p>5. N/A</p>	<p>1. N/A</p> <p>2. N/A</p> <p>3. N/A</p> <p>4. N/A</p> <p>5. N/A</p>
2.1	Declaration.Statement Type.Code	<p>Valid mandatory enumerations are :</p> <p>1. 'ELP'</p> <p>2. 'TrueAndCorrect'</p> <p>3. 's320'</p>	<p>1. SchematronID= CMN.ASIC.7051.0000015</p> <p>2. SchematronID= CMN.ASIC.7051.0000013</p> <p>3. SchematronID= CMN.ASIC.7051.0000014</p>	<p>1. CMN.ASIC.7051.0000015</p> <p>2. CMN.ASIC.7051.0000013</p> <p>3. CMN.ASIC.7051.0000014</p>
2.2	Declaration.Statement Accepted.Indicator	<p>1. Must be 'yes' for declaration type 'ELP'</p> <p>2. Must be 'yes' for declaration type 'TrueAndCorrect'</p> <p>3. Must be 'yes' for declaration type 's320'</p> <p>Note that 'yes' implies the UI implementation and the XBRL equivalent is 'true'</p>	<p>1. SchematronID= CMN.ASIC.7051.0000027</p> <p>2. SchematronID= CMN.ASIC.7051.0000021</p> <p>3. SchematronID= CMN.ASIC.7051.0000024</p>	<p>1. CMN.ASIC.7051.0000027</p> <p>2. CMN.ASIC.7051.0000021</p> <p>3. CMN.ASIC.7051.0000024</p>
2.3	Declaration.Signature.Date	<p>1. Date must be less than or equal to current date for declaration type 'TrueAndCorrect'</p> <p>2. Date must be less than or equal to current date for declaration type 's320'</p> <p>3. Date must be less than or equal to current date for declaration type 'ELP'</p> <p>4. Date is mandatory for declaration type 'TrueAndCorrect'</p> <p>5. Date is mandatory for declaration type 's320'</p> <p>6. Date is mandatory for declaration type 'ELP'</p>	<p>1. SchematronID= CMN.ASIC.7051.0000020</p> <p>2. SchematronID= CMN.ASIC.7051.0000023</p> <p>3. SchematronID= CMN.ASIC.7051.0000026</p> <p>4. SchematronID= CMN.ASIC.7051.0000019</p> <p>5. SchematronID= CMN.ASIC.7051.0000022</p> <p>6. SchematronID= CMN.ASIC.7051.0000025</p>	<p>1. CMN.ASIC.7051.0000020</p> <p>2. CMN.ASIC.7051.0000023</p> <p>3. CMN.ASIC.7051.0000026</p> <p>4. CMN.ASIC.7051.0000019</p> <p>5. CMN.ASIC.7051.0000022</p> <p>6. CMN.ASIC.7051.0000025</p>
2.4	Declaration.Signatory Identifier.Text	1. Optional	1. N/A	1. N/A

3	PersonNameDetails (Tuple)	1. Mandatory one	1. N/A	1. N/A
3.1	Person Name Details.Family Name.Text	1. Must be the name of the person signing the report	1. N/A	1. N/A
3.2	Person Name Details.Given Name.Text	1. Must be the name of the person signing the report	1. N/A	1. N/A
3.3	Person Name Details.Other Given Name.Text	1. Optional	1. N/A	1. N/A
3.4	Person Name Details.Position.Text	1. Mandatory – the position of the person signing the report with valid values : "Director" or " Secretary"	1. SchematronID=CMN.ASIC.GEN.0000055	1. CMN.ASIC.GEN.0000055

**Context INT**

Seq No.	XBRL Fact	Instructions / Rules	Rule Imp.	SBR Msg Code
1	Organisation NameDetails (Tuple)	1. Optional one tuple for 'Organisation Name Details' or 'Person Name Details' to be provided 2. Must match the identifier (Registered Agent Number or Auditor Number) specified in the context entity identifier	1. N/A 2. Agency	1. CMN.ASIC.7051.000009
1.1	OrganisationNameDetails.OrganisationalNameType.Code	1. Must be "MN"	1. SchematronID=CMN.ASIC.GEN.0000072	1. CMN.ASIC.GEN.0000072
1.2	Organisation Name Details.Organisation Name.Text	1. Must be same as in ASIC records (the value retrieved from ASIC records using Prefill Service that should be a non-editable field)	1. Agency	1. CMN.ASIC.GEN.0000007
2	PersonNameDetails (Tuple)	1. 1. Optional one tuple for 'Organisation Name Details' or 'Person Name Details' to be provided 2. Must match the identifier (Registered Agent Number or Auditor Number) specified in the context entity identifier	1. N/A 2. Agency	1. N/A 2. CMN.ASIC.7051.000009
2.1	Person Name Details.Family Name.Text	1. Must be the value retrieved from ASIC records using Prefill Service (should be a non-editable field)	1. Agency	1. CMN.ASIC.GEN.0000029
2.2	Person Name Details.Given Name.Text	1. Must be value retrieved from ASIC records using Prefill Service (should be a non-editable field)	1. Agency	1. CMN.ASIC.GEN.0000029
2.3	Person Name Details.Other Given Name.Text	1. Optional	1. N/A	1. N/A
2.4	Person Name Details.Position.Text	1. Not required	1. N/A	1. N/A

**Context RE**



Seq No.	XBRL Fact	Instructions / Rules	Rule Imp.	SBR Msg Code
1	Organisation NameDetails (Tuple)	1.Optional one – name of the Responsible Entity if the entity is a Managed Investment Scheme	1. SchematronID=CMN.ASIC.7051.0000040	1. CMN.ASIC.7051.0000040
1.1	OrganisationNameDetails.OrganisationalNameType.Code	1. Must be "MN"	1. SchematronID=CMN.ASIC.GEN.0000072	1. CMN.ASIC.GEN.0000072
1.2	Organisation Name Details.Organisation Name.Text	1. Must be the value retrieved from ASIC records using Prefill Service (should be a non-editable field)	1. Agency	1. CMN.ASIC.7051.0000041

## 5.5.2 Lodge Response - Message

The lodge response message has no XBRL payload and ASIC will acknowledge the receipt of the lodge message using the MessageEvent in the SBDH.

### 5.5.2.1 Discoverable Taxonomy Set References

No XBRL payload so no DTS developed for this message. All relevant content will be contained within the SBDH.

### 5.5.2.2 Standard Business Document Header Content

Only rules specific to this message are listed in the table below.

Attribute Name	Instructions / Rules
sbdm:Message.Type.Text	1. Mandatory - Value will be "f7051.0001.lodge.response"
BusinessDocument.GovernmentGeneratedIdentifier.Text	1. Mandatory - unique identifier issued by ASIC that must be used for Request List Lodgment Status message

### 5.5.2.3 Standard Business Document Body Content

The lodge response message has no XBRL payload.

## APPENDIX A – THE MESSAGE CONTENT TABLE EXPLAINED

This section defines the table structure that **must** be used to define the context, structure, and rules of the data elements contained within the XBRL instance document – referred to as the message content table.

There will be a message content table for each context within the message. The grouping of the data elements in accordance to the context aligns to how the data elements are built into the XBRL taxonomy and this consistent presentation will assist Software Developers.

The message content table uses the following rows and columns:

**Context Type (row at top of table):** This is the name of the XBRL Context Specification or Context Instance which has been defined early in the MIG document.

**Sequence Number:** This is a sequential number used to indicate the expected order of the data elements within the instance document and to describe the structure of tuples. Data elements within a tuple are allocated a multilevel number to indicate the expected structure and order of the data elements contained within the tuple. If there are nested tuples then the sequence number goes to next numbering level. The following is an extracts from a message content table which illustrates the sequence numbering and multileveling require to cater for tuples and nested tuples.

Seq No.	XBRL Fact
1.	PaymentMechanism (Tuple: zero to many)
1.1.	PaymentMechanism.PaymentMethod.Code
1.2.	PaymentMechanism.Instruction.Text
1.3.	DirectDebit (tuple zero to one)
1.3.1.	Payment Mechanism.Direct DebitAccount.Identifier
1.3.2.	Payment Mechanism.Direct Debit Name.Text
1.4.	DirectCredit (tuple zero to one)
1.4.1.	Payment Mechanism.Direct CreditAccount.Identifier
1.4.2.	Payment Mechanism.Direct CreditName.Text
1.4.3.	FinancialInstitutionAccount (Tuple One Only)
1.4.3.1.	FinancialInstitutionAccount.BankStateBranch.Number
1.4.3.2.	FinancialInstitutionAccount.FinancialInstitutionAccount.Number
1.4.3.3.	FinancialInstitutionAccount.FinancialInstitutionAccountName.Text
1.4.3.4.	FinancialInstitutionAccount.FinancialInstitutionBranchName.Text
1.4.3.5.	FinancialInstitutionAccount.FinancialInstitutionName.Text

**XBRL Fact:** This is the name of the data element to be reported. For example:

*Identifiers.AustralianBusinessNumber.Identifier*

**Instructions / Rules:** This column describes all the instructions / rules applicable to the data element. Each rule needs to be given a sequential number which links the rule to its implementation and message code. Rules would include information such as optionality, presentation criteria and the use of XML attributes such as IsVisible.

**Rule Implementation:** This column informs Software Developers how the rules specified in the Rules column will be provided. There can only be the following options:

- XBRL – validation provided via the XBRL schemas and linkbases. Typically rules implemented via XBRL do not need to be specified within the MIG. Only those rules that are considered to provide necessary information to software developers should be defined within the MIG. An example of this is the rules associated with the domain values of a dimension within a context specification.
- Schematron ID – for rules that cannot be implemented using XBRL some agencies will provide a schematron implementation of the rule. When schematron is provided then the unique ID used to identify the rule within the schematron file must be provided within the MIG. The following is an example of how this should appear in the column :.Schematron ID = VICMIG001
- MIG - There will be situations where rules will not be provided to Software Developer in a machine readable format and the description of the rule in the MIG is all that will be provided. In this situation the Software Developer has the choice of either implementing the rule as specified within the MIG or they rely on the agency to validate the data element (the expectation is that the Agency will always test for this rule)
- Agency – This rule cannot be implemented by the Software Developer and can only be executed by the agency.
- SBR Core Services – Some rules are executed within SBR Core Services which will only return SOAP Faults.

**SBR Message Code:** All messages returned via the SBR channel will contain a code to uniquely identify the condition that has occurred.

NOTE: This column is only applicable for request messages and the column will not be present in the table for Response Messages.

In order to allow codes to be managed in a distributed fashion, codes will take the following format:

**{Jurisdiction}.{Agency}.{Function}.{Id}**

represented by the regular expression

**([A-Z0-9])+.([A-Z0-9])+.([A-Z0-9])+.([A-Z0-9])+**

Initially

**Jurisdiction** = SBR | CMN | QLD | NSW | ACT | VIC | SA | WA | NT | TAS

**Agency** = Jurisdiction specific agency code

For CMN (Commonwealth), = ATO, ASIC, APRA, ABS

For SBR = GEN (i.e. SBR wide codes)

For States = OSR of Offices of State Revenue

**Function** = Agency specific functional area or GEN for agency wide codes

For SBR = GEN or FAULT

**Id** = function specific identifier (format may vary across agencies).

Examples are shown below;

SBR.GEN.FAULT.TOOMANYINSTANCES

CMN.ATO.TFN.OK

QLD.OSR.PRL.000001

The above structure recognises and caters for the current situation where agency errors are unharmonised, and will need to be passed through to client software.

The expectation is that for each rule identified within the message content table to have a corresponding message code however depending on the rule implementation a message code may not be relevant in which case Not Applicable (N/A) should be inserted into the rules corresponding message code to make this clear to Software Developers. The follow table summaries what must be provided in the message code column in relation to the rules implementation choice.

Rule Implementation	Message Code
Schematron	Message Code needs to be provided against corresponding rule..
XBRL	Message Code not relevant – place N/A against corresponding rule.
MIG	Message Code needs to be provided against corresponding rule. The only exception is if the rule is associated to rendering instruction to the software developer.
Agency	Message Code needs to be provided against corresponding rule.
SBR Core Services	Message Code not relevant as all issues detected by Core Services will be returned to the Software Developer as SOAP Faults. If a rule needs to be specified within the MIG then the SOAP Fault SubCode should be provided. For more details on error handling within Core Service please refer to the Web Services Implementation Guide (WIG).

The expectation is that each agency will populate a message repository with all error, warning and information message that could be returned via the SBR channel. These message will be allocated an SBR message code using the above mentioned code format. The Software Developer would then use the SBR message code provided via the MIG and the message repository to obtain the full details associated with the message.