

High Level Design

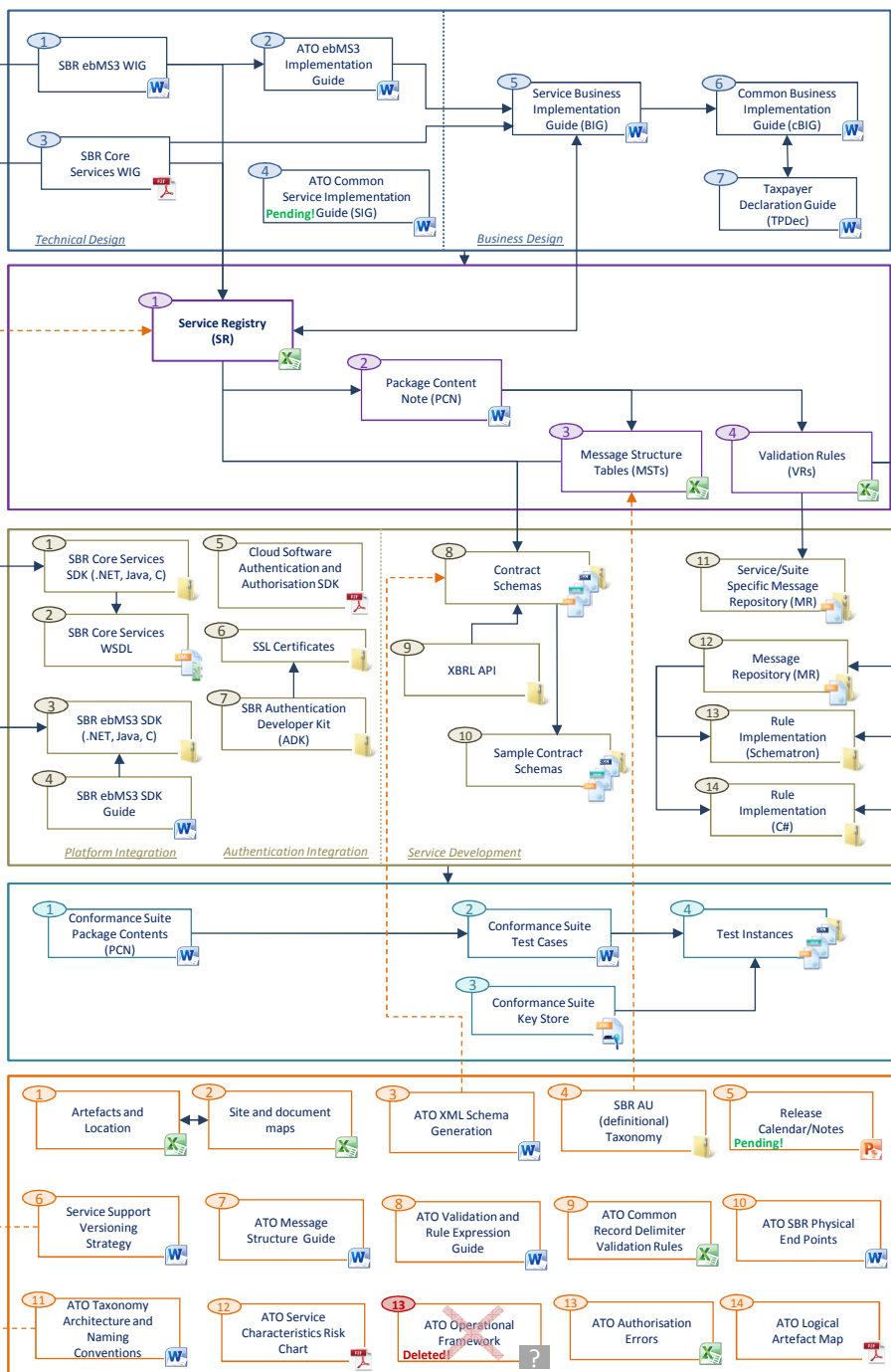
Functional Design

Build

Test

Support

Artefact Map



Numeric locator descriptions

- 1 SBR ebMS3 WIG:** Describes common technical components and services that are re-used by all business services, with messaging based on the ebMS3 standard and AS4 Conformance Profile.
- 2 ATO ebMS3 IG:** Describes the ATO's implementation of the SBR ebMS3 WIG. This information was previously found in the cMIG and has been updated with a new pattern.
- 3 SBR Core Services WIG:** Describes common technical components and services that are re-used by all business services on this platform.
- 4 ATO Common Service Implementation Guide (SIG):** Describes the various implementation models that different consumers may adopt and the technical artefacts needed for a particular consumer lens. **Publication is scheduled for late March 2018.**
- 5 Service Business Implementation Guide (BIG)**
- 6 Common Business Implementation Guide (cBIG)**
- 7 Taxpayer Declaration Guide (TPDec)**
- 8 Contract Schemas:** Service/Suite specific schemas/message contracts in the formats of XBRL, XML or JSON.
- 9 XBRL API:** Provides functionality for creating, validating, and consuming XBRL business documents. *Note: this API is no longer given DSPs who had not registered prior to June 2014.*
- 10 Sample contract schemas:** Provided where test instances are in a later delivery cycle in order to show how an instance may look.
- 11 Service MR:** Contains the Service/Suite ATO response messages.
- 12 MR:** Contains the majority of ATO response messages. Some services have response messages packaged separately and these can be found within the service zip package.
- 13 Rules - Schematron:** Provides the technical consumable VRs in Schematron for legacy implementations.
- 14 Rules - C#:** Provides the technical consumable VRs in C# for new implementations.
- 1 SR:** Contains service and message configuration data needed to interact with the ATO. This is a critical artefact in order to understand the relationships of messages to services, formats and deployment platforms.
- 2 PCN:** Documents the contents of a service/suite package zip, the status of the artefacts, limited change history and key issues (essentially a high level release note).
- 3 MST(s):** Defines the basic technical attributes and construct of a given message (contract schema). Relevant associated business data is also included to facilitate the end user to understand requirements at an elemental level.
- 4 VR(s):** Defines the validation rules for a given message (contract schema), along with links to error codes. These artefacts are a sub-set of the technical (XML) Message Repository - containing all messages for the ATO. These are linked to their corresponding technical rule implementations (Schematron and/or C#).
- 1 SBR Core Services SDK:** Contains reference client showing how to call the Keystore and Vanguard with a UI.
- 2 SBR Core Services WSDL:** Describes the service, the information exchanged and the technical protocols used for the exchange.
- 3 SBR ebMS3 SDK:** Contains reference client showing how to call the Keystore and Vanguard (without a UI); the embeddable client which allows ebMS3 base communication.
- 4 SBR ebMS3 SDK Guide:** Identifies the key components of the SDK solution. Some of these components are re-used from the previously released SBR Core Services SDK. For new components, this document will outline the usage details and the API specification (where applicable).
- 5 Cloud Software Authentication and Authorisation SDK:** Outlines the steps a DSP needs to perform to become CAA certified.
- 6 SSL Certificates:** Contains SSL certificates that can be used for the various SBR environment endpoints.
- 7 SBR Authentication Developer Kit (ADK):** Contains language specific SDKs to implement the Secure Token Service (STS) to connect to Vanguard.
- 8 Contract Schemas:** Service/Suite specific schemas/message contracts in the formats of XBRL, XML or JSON.
- 9 XBRL API:** Provides functionality for creating, validating, and consuming XBRL business documents. *Note: this API is no longer given DSPs who had not registered prior to June 2014.*
- 10 Sample Contract Schemas:** Provided where test instances are in a later delivery cycle in order to show how an instance may look.
- 11 Service/Suite Specific Message Repository (MR)**
- 12 Message Repository (MR)**
- 13 Rule Implementation (Schematron)**
- 14 Rule Implementation (C#)**
- 1 Conformance PCN:** Detailing artefacts within the package, their status, history and any known issues.
- 2 Conformance Test Cases:** Defines the test cases used to self-certify against for a given service.
- 3 Test instances:** Instance documents for use in self-certification testing.
- 4 Conformance Key Store:** Containing AUSkeys for a SWD to use when testing their product.
- 1 Artefacts and location:** Contains links to artefact packages/documents and a short change description.
- 2 Site and document maps:** Contains site and document information.
- 3 ATO XML Schema Generation:** Describes the algorithm that the ATO uses to generate XML schemas from Message Structure metadata.
- 4 SBR AU (definitional) Taxonomy:** Collection of items (data elements) that may be required to be reported by business to government agencies.
- 5 Release Calendar/Notes:** Provides a visual summary of expected services and environment deployment dates for a given period and release information.
- 6 Service Versioning:** Outlines the endorsed strategy for life cycle states of a service, principles for supporting versions and the decommissioning process.
- 7 ATO Message Structure Guide:** Describes the data within the MSTs (previously in the cMIG).
- 8 ATO Validation Rule Expression Guide:** Describes the ATO validations and structured rule expressions (previously in the cMIG).
- 9 ATO Common Record Delimiter Validation Rules**
- 10 ATO SBR Physical End Points**
- 11 ATO Taxonomy Architecture and Naming Conventions**
- 12 ATO Service Characteristics Risk Chart**
- 13 ATO Operational Framework** Deleted!
- 13 ATO Authorisation Errors**
- 14 ATO Logical Artefact Map**
- 9 ATO Common Record Delimiter Rules:** Describes the validation that is applied to any message received in the eCommerce Bulk format.
- 10 ATO SBR Physical End Points:** Defines the physical end points for both SBR platforms (along with EVTE and PROD) and STS (Vanguard) [previously in the WIGs and cMIG].
- 11 ATO Taxonomy Architecture:** Defines the ATO generated XBRL taxonomy architecture, naming conventions of ATO schemas (for supported formats) and linkbases where the format is XBRL.
- 12 ATO Service Characteristics Risk Chart:** Describes the way in which the ATO classifies wholesale service actions and needs to be read in conjunction with the Service Registry.
- 13 ATO Operational Framework:** Describes in detail the implementation of the operational framework and what DSPs need to do. **Information is found on ato.gov.au.**
- 13 ATO Authorisation Errors:** Defines the Authorisation Errors that an end user may receive.
- 14 ATO Logical Artefact Map (this PDF):** Maps ATO artefacts to the SDLC.